

DEVELOPMENT ON POTENTIALLY CONTAMINATED LAND AND/OR FOR A SENSITIVE END USE

Technical Guide for Planning Applicants and
Developers

Hertfordshire and Bedfordshire Contaminated
Land Forum



Copyright © 2012 Hertfordshire and Bedfordshire Contaminated Land Forum

First Published: August 2008. Second Edition: July 2012

CONTENTS

1. Scope of Guide.....	3
2. Introduction.....	3
3. Site Characterisation and Risk Assessment.....	8
4. Remediation Strategy	11
5. Verification/Validation	13
6. Other Issues	14
7. Key Points	15
References:	15
Appendix 1 – Examples of Potentially Contaminative Land Uses	17
Appendix 2 – Site Contamination Assessment Procedure Flow Chart	18
Appendix 3 – Certificate of Remediation	19
Appendix 4 - Contact Information	20

1. Scope of Guide

The Hertfordshire and Bedfordshire Contaminated Land Forum consists of representatives from the Hertfordshire and Bedfordshire local authorities, Milton Keynes Council and the Environment Agency. In 2008 the forum identified that there was a need to produce a clear and informative guide for planning applicants and developers on how to deal with land contamination issues on sites being developed through the planning regime. This need became more pronounced with the revocation of Planning Policy Statement 23 in April 2012 and it is hoped that this guide will ensure that a consistent approach is taken across the region.

The purpose of this guide is to provide developers, planning agents and other applicants with details of the information required by local authorities for sites that may be affected by land contamination or for when sensitive end uses are introduced to a site. Please note that this guidance is not an exhaustive list of requirements and therefore developers are encouraged to speak with the relevant Contaminated Land Officer within their local authority (see contact details in Appendix 4).

Important

This guide is written to serve as an informative and helpful source of advice. Readers must note that legislation, guidance and practical methods are subject to change. All reasonable precautions have been taken to ensure that the information contained within this document is accurate at the time of publication. However, the Hertfordshire and Bedfordshire Contaminated Land Forum cannot assume legal responsibility for any loss or damage caused to person, land or property for persons relying on this information.

2. Introduction

Land contamination is principally a legacy of historical industrial activities and past waste disposal practices. Examples of such industries include gas works, chemical works, landfill sites, sewage works, petrol stations and scrap yards (Appendix 1). In some instances, substances and waste materials from these activities may have caused pollution to the ground. This contamination has the potential to cause harm to human health, ground and surface waters, ecological systems and the built environment. Land contamination can also include areas of land with elevated levels of naturally occurring substances or where substances are present as a result of accidents, spillages, aerial deposition or migration.

In April 2000 the Government introduced new legislation (Part 2A of the Environmental Protection Act 1990) requiring all local authorities to inspect their areas for potentially contaminated land and, if necessary, to ensure that any contamination is 'cleaned up' (remediated). Part 2A introduced the legal definition of 'contaminated land':

"any land which appears to the local authority in whose area it is situated to be in such a condition, by reason of substances in, on or under the land, that:

- (a) significant harm is being caused or there is a significant possibility of such harm being caused; or
- (b) significant pollution of controlled waters is being caused or there is a significant possibility of such pollution being caused."

Under Part 2A, all councils had a duty to produce a 'Contaminated Land Strategy' by July 2001. The main aim of these strategies is to identify all areas of land that are potentially contaminated within each local authority's boundaries. New statutory guidance published in April 2012 requires that these strategies are updated in a reasonable timescale to take in to account revisions to the regime introduced by the new statutory guidance. Copies of the individual Hertfordshire and Bedfordshire Contaminated Land Forum strategies are available on request or can be viewed on the relevant local authority's website (see contact details in Appendix 4).

Despite the introduction of the Part 2A legislation, the planning process is still the main driver for dealing with land contamination issues. This will undoubtedly continue to be the case as government policy encourages the redevelopment of previously developed land ('brownfield' sites) to housing. As a result, land contamination issues will inevitably be a factor in many new developments.

The National Planning Policy Framework (NPPF) March 2012 was introduced to help achieve sustainable development and it identifies the protection and enhancement of our natural environment as an aspect of one of the three dimensions to sustainable development. As such land contamination, or the possibility of it, must be taken into account in the preparation of local and neighbourhood plans and is a material planning consideration in planning decisions. It remains the responsibility of the landowner/developer to identify land affected by contamination and, if necessary, to ensure that remediation is undertaken to secure a safe development. This will normally be achieved by attaching conditions to planning permissions requiring developers to perform a contamination assessment for their site. These conditions will typically be recommended by the Local Authority Environmental Health department in their role as statutory consultees to the planning process.

The NPPF states that:

“encouraging the effective use of land by reusing land that has been previously developed (brownfield land), provided that it is not of high environmental value” is a core planning principle.

“to prevent unacceptable risks from pollution and land instability planning policies and decisions should ensure that new development is appropriate for its location. The effects (including cumulative effects) of pollution on health the natural environment or general amenity and the potential sensitivity of the area or proposed development to adverse effects from pollution should be taken into account.”

“where a site is affected by contamination or land stability issues, responsibility for securing a safe development rests with the developer and/or landowner.”

Appendix 1 lists some examples of industries that may historically have contaminated or have the potential to contaminate the land they are sited upon, as well as neighbouring land.

Land uses that are considered sensitive to contamination include:

- All residential development
- Allotments
- Schools
- Nurseries
- Playgrounds
- Hospitals

In April 2008, the government department for Communities and Local Government (CLG) introduced the Standard Planning Application Form (1APP) to replace all existing planning application forms within England. Section 15 ('Existing Use') of the 1APP form asks whether the proposal involves any of the following:

- Land which is known to be contaminated?
- Land where contamination is suspected for all or part of the site?
- A proposed use that would be particularly vulnerable to the presence of contamination?

15. Existing Use

Please describe the current use of the site:

Is the site currently vacant? Yes No

If Yes, please describe the last use of the site:

When did this use end (if known)?
DD/MM/YYYY
(date where known may be approximate)

Does the proposal involve any of the following:

Land which is known to be contaminated? Yes No

Land where contamination is suspected for all or part of the site? Yes No

A proposed use that would be particularly vulnerable to the presence of contamination? Yes No

If you have answered Yes to any of the above, you will need to submit an appropriate contamination assessment.

Unless investigations have shown otherwise, any site subject to or adjacent to previous industrial use would be classed as land where contamination is suspected for all or part of the site. Any site with a proposed sensitive end use, as listed above, would be classed as a proposed use that would be particularly vulnerable to the presence of contamination. Therefore, where proposals involve either or both of the above scenarios, an appropriate contamination assessment will need to be submitted for the site with the planning application.

The following sections of this guide detail the information that should be submitted to the local authority as part of a planning application for development on land subject to or adjacent to previous industrial use and also where uses are being considered that are particularly sensitive to contamination. Appendix 2 presents a flow chart detailing the actions and information necessary at each stage of the planning process.

It is important to note that applications may be rejected if they are submitted without a preliminary contamination assessment or if they fail to address all of the relevant issues in this guide.

Therefore, where a developer is proposing to develop on land that may potentially be contaminated, it is advisable to contact the relevant local authority's Contaminated Land Officer, via the Local Planning Authority, to discuss any land contamination issues prior to submitting a planning application. It is important to remember that appropriate and timely action at this stage should reduce the likelihood of urgent and expensive action later in the process.

Environment Agency Consultation

The Environment Agency are the national regulators of controlled waters, which include rivers, groundwater, ponds, streams, canals, estuaries and coastal waters. The Environment Agency will normally be consulted by the Local Planning Authority on planning applications where:

- Development is proposed on previously developed land that may have given rise to contamination; and
- The site is located on an aquifer; and/or
- The site is located within 50 metres of a significant surface water body.

In such circumstances, the Environment Agency may recommend that conditions be attached to planning permissions requiring developers to perform a controlled waters contamination assessment for their site. These conditions may be imposed in addition to those recommended by the Local Authority Environmental Health Department. The Environment Agency has produced their own 'Guiding Principles' document which details what information should be included in controlled water assessment reports (see References).

Reference should therefore be made to this guidance where development sites may pose potential contamination risks to controlled waters. The Environment Agency guidance and the information contained in this document follow the same risk-based framework. Consequently, in both cases, the reporting requirements for each stage of the development process are very similar.

It is important to note that for sites where contamination poses potential risks to controlled waters, planning conditions will not be discharged until both the Contaminated Land Officer and the Environment Agency have approved all appropriate contamination assessment reports.

Water Framework Directive

The Water Environment (Water Framework Directive) (England & Wales) Regulations 2003 enact the Water Framework Directive in England and Wales. Local Authorities have a duty to "have regard" for the River Basin Management Plans. Therefore development plans and development control decisions should:

- identify when there might be impacts on water bodies;

- seek options to reduce impacts;
- assess risk of deterioration; and
- require all practical mitigation.

3. Site Characterisation and Risk Assessment

The Department for the Environment Food and Rural Affairs (Defra) and the Environment Agency published guidance in 2004 with the aim of providing a technical framework for applying a risk management process when dealing with land contamination issues. Reference should be made to this document, *'Model Procedures for the Management of Land Contamination – Contaminated Land Report 11'* (CLR11), before carrying out any phase of the site contamination assessment process. CLR11 can be downloaded for free from the Environment Agency's website (see References).

Site characterisation and risk assessment requires a phased approach. A Phase 1 assessment is predominantly a desk-based exercise, whereas a Phase 2 assessment involves intrusive investigation of the site. However, limited intrusive investigation may be required as part of a Phase 1 assessment in order to establish the nature of ground conditions on a site, such as the presence of made ground. If the Phase 1 assessment shows that contamination is or may be present on the site, then a Phase 2 assessment will be required.

The objective of the Phase 1 and Phase 2 investigations is to establish a risk assessment, which will enable the applicant and the regulators to clearly define the risk of harm from contamination to existing and proposed end users of the site, as well as to any other environmental receptors. Should unacceptable risks be identified, remedial works will be necessary to alleviate these risks.

Experienced and competent persons should perform all elements of the site characterisation process. This will usually involve the commissioning of a consultant or specialist. Such persons must be familiar with all current site investigation techniques and risk assessment methodologies. They should also be aware of current UK policy and the legislative framework surrounding land affected by contamination. The Hertfordshire and Bedfordshire Contaminated Land Forum are unable to recommend specific consultants or contractors. Lists can be found in telephone and trade directories and on professional institution websites.

Phase 1 -Desktop Study, Site Walkover and Preliminary Risk Assessment

The Phase 1 assessment should consist of a desk study, site walkover, conceptual model and a preliminary risk assessment. The desk study comprises a search of available environmental information and historical maps, which can be used to identify the likelihood of contamination. A

simple walkover survey of the site should be conducted to identify pollution linkages not obvious from the desk study. Limited intrusive investigation may also be appropriate at this stage. Therefore applicants need to familiarise themselves with the site and surrounding area, its former use and its potential to cause contamination. The Phase 1 assessment should include:

- Detailed site plan showing the site location, extent and boundary;
- Site walkover information including description of condition of structures, soils and vegetation;
- Geographical setting of site including geology, hydrology and hydrogeology;
- Review of current and historical maps for site and surrounding area;
- Previous, present and proposed uses of the site and adjacent land;
- Previous and current industrial processes carried out on site including environmental permits;
- Details of pollution incidents or spillages;
- Information on waste management and disposal practices including landfill sites;
- Details of water abstractions, discharge consents, drainage and services;
- Information on any mining, extraction or infilling activities;
- A review of any previous desk studies or site investigations;
- Initial sampling of soils, water and gas where appropriate; and
- An awareness of all potential on and off site receptors.

From the findings of this work, a preliminary conceptual model will be developed for the site. This will normally be in the form of a table or schematic diagram illustrating any potentially significant sources of contamination; pathways through which contaminants can travel; and receptors that eventually could be harmed.

The preliminary risk assessment and conclusions derived from the conceptual model will indicate whether a Phase 2 contamination assessment (intrusive site investigation and risk assessment) is required. The Phase 1 assessment should be submitted as a written report to the local authority prior to commencement of a Phase 2 investigation, as the local authority or Environment Agency may require further information or clarification of issues.

Various companies offer a database generated desk study type report (e.g. Envirocheck, Sitescope, Groundsure and Homecheck). It is acceptable for these kinds of reports to be included as part of a Phase 1 assessment. However, such reports submitted in isolation will be inadequate to provide all of the information required for a Phase 1 assessment.

Local authority Environmental Health and Planning departments are also very useful sources of environmental information for desk study purposes. Therefore it is advisable to contact the relevant departments to see if they hold any records relating to potential contamination issues with a

particular site. Please note that there may be a charge for the provision of such environmental information.

Phase 2 – Intrusive Site Investigation

A Phase 2 assessment consists of an intrusive site investigation and a subsequent risk assessment. The investigation process should seek to confirm potential contaminant-pathway-receptor contaminant linkages at the site to allow refinement of the preliminary conceptual model. The data obtained will be used to inform a decision as to whether the site is potentially harmful and if remedial works are required to mitigate any risks from contamination present.

The intrusive investigation needs to be performed by a suitably qualified and experienced competent consultant or specialist. Investigation should be carried out in accordance with CLR11 and British Standard '*BS10175:2011 Investigation of potentially contaminated sites – Code of practice*' (see References).

All sampling strategies should be designed to provide data that are representative of the site conditions as a whole. Sampling should be undertaken in accordance with recognised sample collection methodology and guidance. Reference to the historical site information obtained from the desk study is essential in order to target possible sources of contamination and to ensure that an appropriate suite of analysis is performed. Underground structures such as fuel tanks, pipe-work and foundations will also need to be identified. Off site sampling may also be required in order to assess whether migration of contamination is occurring away from the site.

A suitably accredited laboratory should be used to undertake analysis of samples. Where available, chemical analysis of samples must be by methods accredited to the Environment Agency's MCERTS (Monitoring Certification Scheme) standard.

Following completion of the investigation, analysis results need to be compared against suitable assessment criteria. Soil sample contaminant concentrations should be compared to Soil Guideline Values (SGVs) that have been developed to be protective of human health. Where these are unavailable for particular contaminants, the CIEH/LQM '*Generic Assessment Criteria for Human Health Risk Assessment*' may be used (see References). Assessment criteria can also be derived using the Environment Agency's CLEA UK Software. Other risk assessment tools might also be acceptable, but their use must be fully justified and conform to current UK policy.

The Environment Agency's '*Remedial Targets Methodology – Hydrogeological Risk Assessment for Land Contamination*' guidance should be used for assessing contamination risks to ground and surface waters (see References). The first step of the assessment is to compare water and

leachate samples to the appropriate environmental water quality standards. If more detailed assessment is required, it is recommended that the Environment Agency is consulted.

BSI, CIRIA, CIEH and NHBC/RSK have all published guidance documents for ground gas risk assessment (see References). Where ground gas issues have been identified on a site, ground gas investigations and risk assessment need to be carried out in accordance with these documents.

Following completion of the investigation, a Phase 2 report detailing the investigation methodologies used, results, conclusions and recommendations needs to be submitted to the local authority for approval. The report should include:

- Rationalisation for sampling locations including reference to desk study findings;
- Sampling techniques used;
- Plans of sampling locations;
- Borehole and trial pit logs;
- Groundwater and ground gas monitoring where applicable;
- Copies of laboratory analysis certificates;
- Discussion of ground, groundwater and gas conditions and any contamination encountered;
- Qualitative and quantitative risk assessments including comparison of analytical results with appropriate assessment criteria;
- Refinement of the conceptual model and preliminary risk assessment;
- Discussion of any uncertainties in relation to the conclusions; and
- Recommendations for further investigation (if required) and remediation.

Scaled plans and cross-sections showing the distribution of contaminants, geology, water levels relative to ordnance datum, etc encountered will help the local authority and Environment Agency review the developer's (consultant's) understanding of the site and will help in the production of the refined conceptual model.

If the Phase 2 assessment shows that there are unacceptable risks from contamination to human health, property or the wider environment, then remediation will be required.

4. Remediation Strategy

A remediation strategy is a document detailing what action is to be carried out so that contamination no longer presents a risk to human health, property, the environment or ecological systems. The report should include details on how the remedial works will be validated to ensure that the remedial objectives have been met. The strategy must be submitted to and approved by the local authority prior to the commencement of remedial works at the site. If remediation of controlled waters is necessary, the Environment Agency will need to approve the proposed works.

Historically the most popular form of remediation to deal with contamination has been 'dig and dump' to landfill. However, current technology allows treatment of soils and waters contaminated to certain levels to be reused. The Hertfordshire and Bedfordshire Contaminated Land Forum encourages the use of alternative and more sustainable remediation techniques to 'dig and dump'. Such remediation techniques include:

- *In-situ* and *ex-situ* bioremediation of soils;
- Soil washing;
- Monitored natural attenuation;
- Air sparging and soil vapour extraction;
- *In-situ* and *ex-situ* thermal desorption;
- Permeable reactive barriers;
- *In-situ* chemical oxidation; and
- Soil stabilisation and solidification.

As part of the production of the remediation strategy, an options appraisal of feasible remediation options should be performed.

The SURF-UK framework (references) is a useful tool to find sustainable remediation options. Following this framework when developing a master plan for an area or large development may result in a more sustainable remediation scheme when compared to a detailed site specific scheme.

Some remedial works may require applications for environmental permits, licenses or consents, especially those involving waste management activities. All such agreements will need to be in place before site works commence. The Environment Agency should be consulted where works involve mobile plant or have waste management issues.

The CL:aire Development Industry Waste Code of Practice may provide a suitable route to the reuse of materials on site (or as part of a hub and cluster site) without the need for formal waste exemptions or environment permits. For material to be used within the Code of Practice: the material must be suitable for use, have certainty of use and a defined use. A Materials Management Plan will be required to be approved by a Qualified Person (QP) and the QP's declaration submitted to the National Permitting Centre at the Environment Agency.

Where remediation requires importation of soil on to the site for use in garden or soft landscaped areas, this material must be 'clean' and suitable for use. Appropriate validation documentation will need to be submitted to the local authority to confirm that imported material is suitable for use. In

certain circumstances, material reclaimed from the site for reuse in garden or soft landscaped areas may also require validation before placement in these areas.

Any unexpected contamination or pathways discovered during site works need to be immediately reported to the local authority. Any necessary additional investigation, risk assessment or remedial works will need to be approved by the local authority.

5. Verification/Validation

Following completion of remediation works, the developer will be required to submit a verification report to the local authority for approval. This should normally be before construction works commence, unless the remediation forms part of the construction process (e.g. placement of cover layers in garden areas or installation of gas protection measures in buildings). The verification report should provide confirmation that all measures outlined in the approved remediation strategy have been successfully completed, including where appropriate, validation testing. The report should include:

- A summary of the works carried out and the risks that have been managed;
- Validation sampling of any imported soils, including details of the source of material and appropriate analysis;
- All laboratory and *in-situ* test results and, if applicable, monitoring results for groundwater and ground gas;
- Photographic and other media records;
- Certification of any gas protection measures installed in individual buildings;
- Waste management and disposal documentation ('Duty of Care'); and
- Confirmation that the remediation objectives have been met.

In certain circumstances it may be necessary for the developer to conduct post-completion monitoring to verify that the remediation has been successful. This should be undertaken to the satisfaction of the local authority and the results of the monitoring should be submitted for review.

On large schemes where development may be phased, progressive discharge of the planning conditions may be possible provided a satisfactory verification report is received for each phase.

When the council is satisfied that the site has been remediated and is suitable for use, the applicant and/or developer will be expected to sign a Certificate of Remediation to confirm that the site has been remediated in accordance with the scheme agreed by themselves and the council. An example certificate is presented in Appendix 3. This certificate has no legal status other than documenting the discharge of the relevant planning conditions for the development. It does not confirm that the site is free from contamination, or that it might not, at some later date, be

determined to be 'contaminated land' (as defined in Part 2A), or offer any kind of guarantee against other future regulatory action or enforcement.

6. Other Issues

There are some issues that developers need to consider for all phases of the investigation and remediation.

All submitted reports should be clear, ordered and rational and avoid the excessive use of scientific terminology and jargon. A summary written in non-technical language should also be provided. Copies of reports should be made available in hard and electronic formats.

The developer is responsible for ensuring that site workers and members of the public are protected from the potential effects of contamination during the entire process. Enforcement for health and safety matters on construction sites is the responsibility of the Health and Safety Executive (HSE).

Care must be taken during site works to ensure that additional pollutant linkages are not created. For example, boreholes and piling can create direct pathways for contaminants to migrate into groundwater, open up routes for ground gas migration, and may expose site workers to contaminated arisings.

Just because a piece of land looks green, it does not mean that there is no contamination at the site. It is always advisable that checks are made on the condition of the land at the start of any proposed development scheme. It should also be noted that when a property is built, a receptor is added to the site. This means that ensuring the land is free from contamination is of great importance.

If the investigations prove that there are no contamination issues to the local authority's satisfaction, then no further action will be necessary. Once this has been confirmed in writing by the local authority, then development will be able to proceed.

Land contamination is a material planning issue. In cases of non-compliance, the local authority can take legal action.

If land is discovered to be affected by contamination following development of a site, local authorities have powers under Part 2A to take action to investigate the land and secure any necessary remediation. Obviously if the land is occupied this may mean severe disruption to the site occupiers. Legal action may be taken to ensure that land is sufficiently remediated and costs

may also be recovered from the developer and/or landowner, regardless of whether they have performed the works.

7. Key Points

- It is the applicant and developer's responsibility to ensure the safe development and secure occupancy of the site.
- It is important to identify actual and potential contamination pollutant linkages at an early stage in order to avoid unexpected costs and delays during and after development.
- Suitably qualified competent professionals should be employed to address contaminated land issues.
- A Phase 1 contamination assessment report should be submitted with any planning application involving land that is suspected or known to be contaminated and/or if the proposed end use is considered sensitive to contamination (e.g. housing, schools, playgrounds, allotments or hospitals).
- All reports and proposed actions will require written approval from the local authority.
- Maintaining a close and effective dialogue with the local authority at all stages of the process is essential to prevent circumstances that lead to delay, expense and/or legal action.

REFERENCES

- British Standards Institute, *BS5930:1999 Code of practice for site investigation*, 1999
www.bsi-global.com/en/Shop/Publication-Detail/?pid=00000000030176112
- British Standards Institute, *BS10175:2011 Investigation of potentially contaminated sites – Code of practice*, 2011
<http://shop.bsigroup.com/en/ProductDetail/?pid=00000000030205349>
- British Standards Institute, *BS3882:2007 Specification for topsoil and requirements for use*, 2007
www.bsi-global.com/en/Shop/Publication-Detail/?pid=00000000030173907
- British Standards Institute, *BS8485:2007 Code of practice for the characterisation and remediation from ground gas in affected developments*, 2007
www.bsi-global.com/en/Shop/Publication-Detail/?pid=00000000030149737
- SA Wilson, GB Card & S Haines, *Ground Gas Handbook*, 2008
www.tsoshop.co.uk/bookstore.asp?Action=Book&ProductId=1904445683
- Chartered Institute of Environmental Health and CL:AIRE, *Guidance on Comparing Soil Contamination Data with a Critical Concentration*, 2008
conland.cieh.org/documents/Statistics%20Guidance%20Report%20May%202008.pdf
- EPA 1990: Part IIA. Contaminated Land – Radioactive Contaminated Land Statutory Guidance. April 2012
http://www.decc.gov.uk/en/content/cms/meeting_energy/nuclear/radioactivity/land/land.aspx
- Chartered Institute of Environmental Health and Land Quality Management, *Generic Assessment Criteria for Human Health Risk Assessment*, 2nd Edition. 2009
<http://www.lqm.co.uk/pages/gac.html>
- CIRIA, *C665 – Assessing risks posed by hazardous ground gases to buildings*, 2007
www.ciria.org/acatalog/C665.html
- Department for Environment Food and Rural Affairs, *Environmental Protection Act 1990: Part 2A, Contaminated Land Statutory Guidance. April 2012*
<http://www.defra.gov.uk/publications/2012/04/10/pb13735contaminated-land/>
- Department for Environment Food and Rural Affairs & Environment Agency, *Model Procedures for the Management of Land Contamination – Contaminated Land Report 11 (CLR11)*, 2004
www.environment-agency.gov.uk/commondata/105385/model_procedures_881483.pdf
- Environment Agency, *Remedial Targets Methodology – Hydrogeological Risk Assessment for Land Contamination*, 2006
publications.environment-agency.gov.uk/pdf/GEHO0706BLEQ-e-e.pdf
- Health & Safety Executive, *Protection of Workers and the General Public during the Development of Contaminated Land*, 1991
www.contaminated-land.org/item.htm?id=26
- Environment Agency. *GPLC1 – Guiding principles for land contamination March 2010*.
<http://www.environment-agency.gov.uk/research/planning/121619.aspx>
- National House-Building Council, Environment Agency and Chartered Institute of Environmental Health, *Guidance for the Safe Development of Housing on Land Affected by Contamination -R&D Publication 66*, 2008

publications.environment-agency.gov.uk/pdf/SR-DPUB66-e-e.pdf?lang=e

National House-Building Council and RSK Group Plc, *Guidance on Evaluation of Development Proposals on Sites where Methane and Carbon Dioxide are Present*, 2007

www.nhbcbuilder.co.uk/NHBCpublications/LiteratureLibrary/Technical/filedownload.29440.en.pdf

Office of the Deputy Prime Minister, *Site preparation and resistance to contaminants and moisture – Approved Document C*, 2004

www.planningportal.gov.uk/uploads/br/BR_PDFs_ADC_2004.pdf

Communities and Local Government, *National Planning Policy Framework*. March 2012

www.communities.gov.uk/publications/planningandbuilding/nppf

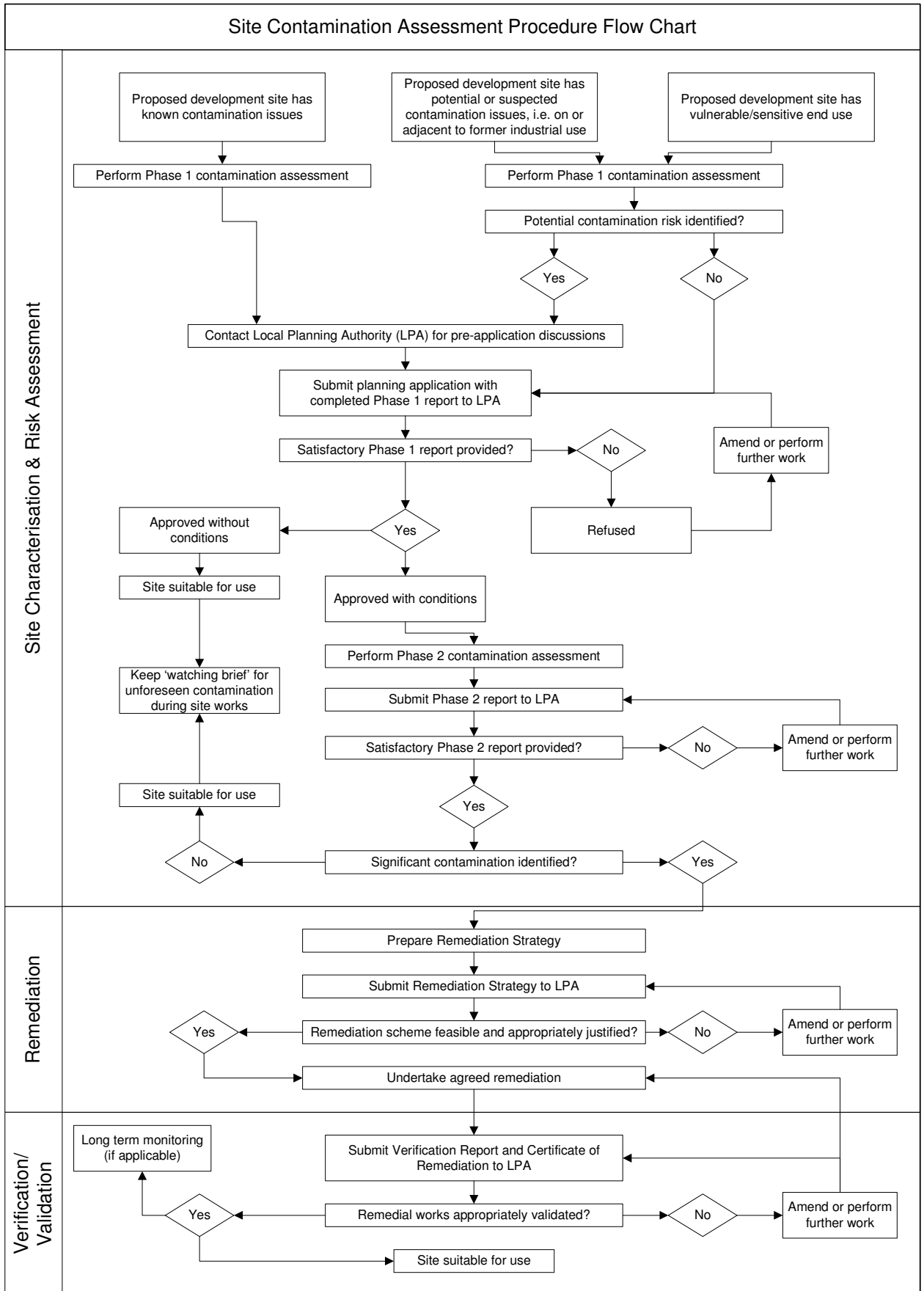
http://www.claire.co.uk/index.php?option=com_content&view=article&id=182&Itemid=78

APPENDIX 1

EXAMPLES OF POTENTIALLY CONTAMINATIVE LAND USES

- Smelters, foundries, steel works, metal processing & finishing works
- Coal & mineral mining & processing, both deep mine and opencast
- Heavy engineering & engineering works, e.g. car manufacture, shipbuilding
- Military/defence related activities
- Electrical & electronic equipment manufacture & repair
- Gasworks, coal carbonisation plants, power stations
- Oil refineries, petroleum storage & distribution sites
- Manufacture & use of asbestos, cement, lime & gypsum
- Manufacture of organic & inorganic chemicals, including pesticides, acids/alkalis, pharmaceuticals, solvents, paints, detergents and cosmetics
- Rubber industry, including tyre manufacture
- Munitions & explosives production, testing & storage sites
- Glass making & ceramics manufacture
- Textile industry, including tanning & dyestuffs
- Paper & pulp manufacture, printing works & photographic processing
- Timber treatment
- Food processing industry & catering establishments
- Railway depots, dockyards (including filled basins), garages, road haulage depots, airports
- Landfill, storage & incineration of waste
- Sewage works, farms, stables & kennels
- Abattoirs, animal waste processing & burial of diseased livestock
- Scrap yards
- Dry cleaning premises
- All types of laboratory
- Radioactive substances used in industrial activities, e.g. gas mantle production, luminising works
- Burial sites & graveyards
- Agriculture – excessive use or spillage of pesticides, herbicides, fungicides, sewage sludge & farm waste disposal
- Naturally occurring radioactivity, including radon
- Naturally occurring elevated concentrations of metals and other substances
- Methane & carbon dioxide production & emissions in coal mining areas, wetlands, peat moors or former wetlands

APPENDIX 2



APPENDIX 3

CERTIFICATE OF REMEDIATION

To be completed by the applicant and developer

This is to certify that the scheme of remediation*, decontamination and reclamation at the site known as:

at National Grid Reference:

in relation to planning approval reference:

was carried out between the dates: and:

and was completed to the agreed specification in the document:

Document Reference: Date:

[and subsequent agreed amendments:

Document Reference: Date:]

which were designed to afford protection from contamination* on the site to all identified receptors*.

Signed:

Date:

Name:

Position:

Company Name:

Company Address:

* 'Remediation', 'contamination' and 'receptors' are defined by Part 2A of the Environmental Protection Act 1990.

APPENDIX 4

CONTACT INFORMATION

Hertfordshire Local Authorities

- Broxbourne Borough Council
01992 785555
www.broxbourne.gov.uk
- Dacorum Borough Council
01442 228455
www.dacorum.gov.uk
- East Hertfordshire District Council
01279 655261
www.eastherts.gov.uk
- Hertsmere Borough Council
020 8207 2277
www.hertsmere.gov.uk
- North Hertfordshire District Council
01462 474000
www.north-herts.gov.uk
- St Albans City and District Council
01727 819442
www.stalbans.gov.uk
- Stevenage Borough Council
01438 242908
www.stevenage.gov.uk
- Three Rivers District Council
01923 776611
www.threerivers.gov.uk
- Watford Borough Council
01923 226400
www.watford.gov.uk
- Welwyn Hatfield District Council
01707 357404
www.welhat.gov.uk

Bedfordshire Local Authorities

- Bedford Borough Council
01234 227257
www.bedford.gov.uk
- Luton Borough Council
01582 510330
www.luton.gov.uk
- Central Beds District Council
08452 304040

Other Organisations

- Milton Keynes Council
01908 252398
www.milton-keynes.gov.uk
- Environment Agency
03708 506506
www.environment-agency.gov.uk