



www.hertsmere.gov.uk/hertsmeretogether

Annual Report 2013/2014

*'Listening, planning,
acting, in partnership'*



Large print and languages

Hertsmere Borough Council aims to provide information in alternative formats where possible.

If you would like a document in a different language or format please call 020 8207 7445 or email customer.services@hertsmere.gov.uk and we will do our best to help.

Please allow sufficient time for any document to be translated.

تهدف بلدية منطقة هارتسمير (Hertsmere Borough Council) إلى توفير المعلومات بصيغ بديلة إذا كان ذلك ممكناً.

إذا اردت أي وثيقة بلغة أو بصيغة أخرى يرجى الاتصال برقم الهاتف 020 8207 7445 أو إرسال بريد الكتروني customer.services@hertsmere.gov.uk وسنبدل قصارى جهننا لمساعدتك. يرجى منحنا وقتاً كافياً لترجمة أي وثيقة مطلوبة.

Hertsmere 自治区政府旨在可能的情况下提供信息的其它格式版本。

如果你想得到以简体中文或其它格式制作的版本，请致电 020 8207 7445，或发送电邮至 customer.services@hertsmere.gov.uk，我们将尽力提供帮助。请预留足够的时间，以便让我们完成有关文件的翻译。

Rada miejska Hertsmere Borough Council zamierza dostarczać wszelkie informacje, tam gdzie jest to możliwe, w różnych formatach.

Jeżeli ktoś chciałby otrzymać dokument w innym języku lub formacie proszony jest zatelefonować na numer 020 8207 7445 lub przesłać e-mail do customer.services@hertsmere.gov.uk a my zrobimy wszystko by pomóc. Prosimy uwzględnić czas na przetłumaczenie każdego dokumentu.

ਹਰਟਸਮਿਅਰ ਬੋਰੋ ਕੌਂਸਿਲ ਜਿਥੇ ਵੀ ਹੋ ਸਕੇ, ਜਾਣਕਾਰੀ ਹੋਰ ਰੂਪਾਂ ਵਿਚ ਦੇਣ ਦਾ ਯਤਨ ਕਰਦੀ ਹੈ।

ਜੇ ਤੁਹਾਨੂੰ ਕੋਈ ਦਸਤਾਵੇਜ਼ ਕਿਸੇ ਹੋਰ ਬੋਲੀ ਵਿਚ, ਜਾਂ ਕਿਸੇ ਹੋਰ ਰੂਪ ਵਿਚ ਚਾਹੀਦਾ ਹੈ, ਤਾਂ ਕਿਰਪਾ ਕਰਕੇ ਨੰਬਰ 020 8207 7445 'ਤੇ ਫ਼ੋਨ ਕਰ, ਜਾਂ ਇਸ ਪਤ customer.services@hertsmere.gov.uk 'ਤੇ ਈਮੇਲ ਭੇਜੋ। ਅਸੀਂ ਤੁਹਾਡੀ ਮਦਦ ਕਰਨ ਦੀ ਪੂਰੀ ਕੋਸ਼ਿਸ਼ ਕਰਾਂਗੇ। ਕਿਰਪਾ ਕਰਕੇ ਇਹ ਯਾਦ ਰੱਖੋ ਕਿ ਦਸਤਾਵੇਜ਼ ਦਾ ਤਰਜਮਾ ਹੋਣ ਨੂੰ ਕੁਝ ਸਮਾਂ ਲਗਦਾ ਹੈ।

Hertsmere Borough Council
Civic Offices, Elstree Way
Borehamwood, Herts WD6 1WA

Tel: 020 8207 2277
Fax: 020 8207 2197
Website: www.hertsmere.gov.uk

Produced by Hertsmere Design and Print Services
Tel: 020 8207 7416 Fax: 020 8207 2197
Email: design@hertsmere.gov.uk

Contents

	Page
Section 1	Introduction..... 2
Section 2	Key achievements 2013/2014 3
	• Healthier Communities 4
	• Safer Communities 7
	• Thriving Communities 10
Section 3	Future partnership working 2014 15
Section 4	Membership 18
Section 5	Performance Reward Grant 20
Section 6	Conclusion..... 21

1. Introduction



Welcome to Hertsmere Together's Annual Report for 2013/14. Hertsmere Together remains a well-supported and motivated partnership. Over the past year the LSP has continued to deliver the Community Strategy, improving services in Hertsmere.

The Community Strategy 2013-2016 sets out a clear commitment and vision for Hertsmere based on what our communities have told us. By working together we can provide services which are joined up and shaped around our communities' needs and aspirations.

This report looks back at some of the key successes Hertsmere Together has achieved over the past year. It also looks to the future and identifies how partnership activity will continue to improve services. We want to continue to make Hertsmere a great place to visit, a great place for business and a place where people can live well and thrive.

A handwritten signature in blue ink, appearing to read 'Morris Bright', with a long, sweeping flourish extending to the right.

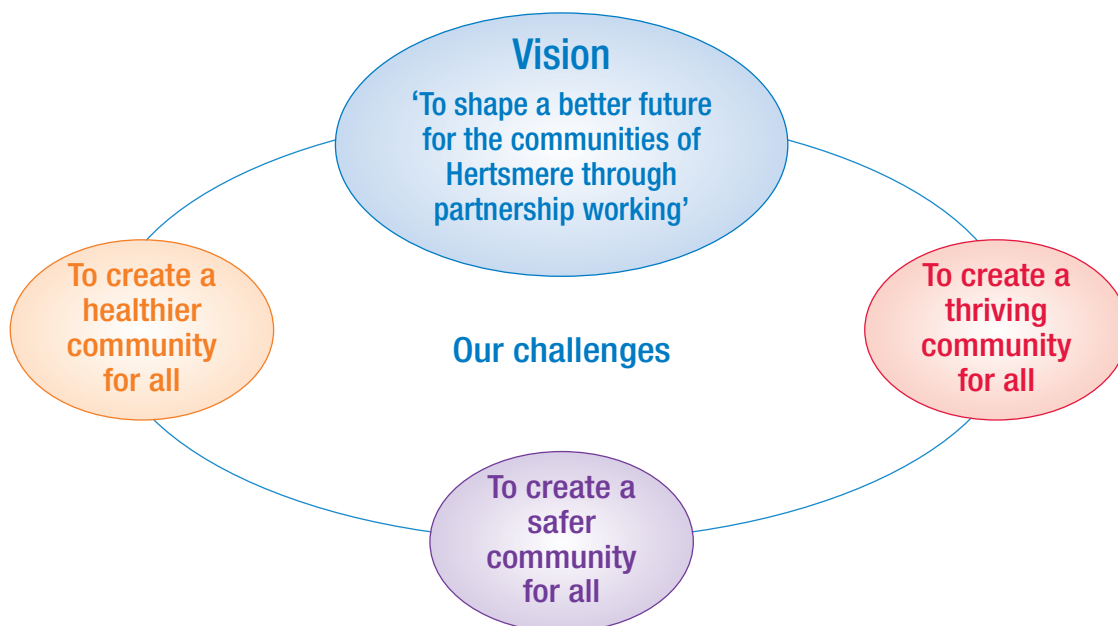
Councillor Morris Bright
Chairman, Hertsmere Together

2. Key achievements 2013/2014

Hertsmere Together has played a strategic role in co-ordinating partnership working and new initiatives in Hertsmere throughout 2013/2014. The following examples are just a snapshot of how the partnership is shaping a better future for the communities of Hertsmere.

The Community Strategy was launched in March 2013 to focus the partnership's work on three key areas; healthier, safer and thriving communities. The aim of the Community Strategy is to promote a shared vision and objectives and deliver a collective approach to service delivery. The key challenges facing Hertsmere are captured within these three areas.

Hertsmere Together's vision



We will work together with communities to identify solutions and initiatives to address local issues.

Healthier Communities

Health and Wellbeing affects each and every one of us. The Health and Wellbeing Partnership, over the past year, has been working towards making health and wellbeing everyone's business, reducing health inequalities and tackling issues at different stages of people's lives.

What are our priorities?

- To promote healthy weight and increase physical activity
- To improve mental health and emotional wellbeing
- To create a healthy culture across all services, all communities and all workplaces

Public Health Fund

In 2013/2014 Hertfordshire County Council, Public Health, awarded £10,000 to Hertsme Together for projects which contribute towards improving public health outcomes. This money was match funded by the LSP and has been successfully awarded to a number of local community groups and organisations to work in partnership to address key challenges in Hertsme.

2013/2014	Capital	Revenue
Amount Allocated	£5,792	£11,095
Live Well		£2,200
Fellas Fitness		£2,500
Herts Mind Network		£2,500
Guideposts Trust	£1,130	
Food Bank	£1,000	
Total Spent	£2,130	£7,200
Funding Remaining	£3,662	£3,895

Public Health Fund 2011/2015	
2011/12	£23,653
2012/2013	£23,951
2013/2014	£17,187
2014/2015	£100,000

In 2014/15 the council will be receiving a significant increase in funding through the Public Health Offer and is preparing a local health and wellbeing strategy to support the delivery of the Hertfordshire Public Health Strategy.

What did we do?

Fellas Fitness

The Fellas Fitness project provides a weekly exercise programme delivered in community venues in Potters Bar and Borehamwood. This older men's health initiative aims to increase the amount of physical activity undertaken by older men, but also to provide information, guidance and advice on healthy lifestyles. Trained and experienced exercise professionals deliver weekly classes with the men, using age appropriate exercises. Participants within the project undergo periodic health MOTs to ascertain their level of fitness on baseline, mid and end point to demonstrate improvements. Fellas Fitness has proven to be a valuable initiative for men to access physical exercise. The project is delivered by Herts Sports Partnership in association with Hertsmere Borough Council and Community Action Hertsmere.



A man from Borehamwood's Fellas Fitness said:

"I've suffered from two heart attacks but have started attending Fellas Fitness. I've lost two stone and feel fantastic.

I now incorporate exercise into my daily routine and have made some great friends too."



Food banks

The LSP has provided financial support and helped develop food banks in Borehamwood and Potters Bar, which opened in March 2013 and September 2013 respectively. Both food banks offer support and three days of emergency food to those who are in crisis.

The food is received from individuals, churches, synagogues, local businesses, the council and community groups in Borehamwood. Tesco continues to support the food bank and allows four yearly collections and they have a permanent collection box at their check outs. Sainsbury's in Potters Bar also supports food collections. So far, 1,836 packs of food have been given out to those who have requested them, with their main issues being benefit delays and debt.

Smoking cessation

The council proactively supports residents and employees to kick the habit and stop smoking. This year the council promoted the 'V for Victory' campaign, run by the British Heart Foundation and encouraged residents and employees to quit smoking.

Live Well

The 'Live Well' project offers practical, flexible assistance to 'older' people to help them remain independent, gain confidence and new skills, build social networks and identify their own solutions to living well. The project began in October 2013 and will run for 18 months.



The Health and Wellbeing Group funded the delivery of 14 sessions covering a range of issues to improve mental health and emotional wellbeing and reduce the harm caused by alcohol and tobacco. It forms part of the wider Live Well project funded by the People's Health Trust and delivered by Community Action Hertsmere. The project is based at Farriers Way Community Centre in the Borehamwood Kenilworth and Borehamwood Hillside wards of Hertsmere.

A participant that attended the Safety & Security Awareness Session said:

"I am happy with your advice and security and safety awareness. Thank you for your help. This was excellent. Lots of information on health and safety."

A participant that attended the Houses of Parliament visit said:

"Fantastic interesting day out and thanks for keeping cost of journey low allowing us to join in. It was a very interesting day. I learned a lot about the Commons and Lords chambers. Very good. Perfect trip. Not too long, well planned. Nice people. Excellent."



'Number 10' Health and Wellbeing Centre

'Number 10' is run by Guideposts Trust and Herts Mind Network. It aims to empower people with mental health or substance misuse issues, giving them the opportunity to develop their skills, build self-confidence and move forward into training, further their education or get into paid employment.

Events, activities and workshops that have been held include:

- Healthy living (cooking lessons, yoga techniques and Zumba)
- Employment training and advice
- Counselling sessions
- Anxiety management (Keep Calm and Carry On)
- Art courses (Art and Start)
- Assertiveness
- The New Year, New You course
- Community engagement



Safer Communities

The Community Safety Partnership (CSP) over the last year has been working toward creating a safer environment for Hertsmere residents, business and visitors. By working in partnership and with our communities to identify local solutions to address local issues we can continue to make Hertsmere safer.

Hertfordshire's Police and Crime Commissioner, David Lloyd allocated the CSP a total of £27,898 to contribute to the partnership, for delivering community safety initiatives across the borough.

What are our priorities?

- To create safer environments by tackling crime (particularly residential burglary and vehicle crime), anti-social behaviour and alcohol-related disorder
- To improve lives by reducing harm caused to communities by drugs
- To reduce offending and manage offender behaviour
- To build community confidence and increase feelings of safety

Community Safety Grant Allocations 2010/2015	
Financial Year	Total
2010/2011	£85,784
2011/2012	£58,976
2012/2013	£29,836
2013/2014	£27,898
2014/2015	£24,898

We have implemented and continue to deliver a wide range of projects against a background of reducing funding.

What did we do?

Local CSP meetings

Residents from across the borough have the opportunity to attend local CSP meetings in their areas to discuss anti-social behaviour, local crime figures, fire safety, community safety initiatives and raise issues of concern. The meetings are held four times a year and are attended by councillors and representatives from the council, police and fire service, housing associations, local businesses and residents.

Domestic Abuse

More than 100 professionals and members of the voluntary sector gathered at Hertsmeare Borough Council in February 2014 for a conference. The event was hosted by the Welwyn Hatfield, St Albans and Hertsmeare Domestic Violence Forum and included sessions on housing for victims, how non-violent offences of domestic abuse can be dealt with, financial abuse of older people and the victimisation of people who have mental illness or learning disabilities.



Plate Safe

Vehicle crime, especially theft of number plates, has been an issue across the borough. Since April, 12 events have taken place which have seen more than 290 vehicles being fitted with theft-resistant screws free of charge. Some local garages have also agreed to hold a stock of the screws and fit them to residents' vehicles when they are in the garage and upon request. At the events residents have also been encouraged to sign up to Immobilise – a free national property database.

Prison Me! No Way!

In May 2013 64 young people took part in a crime prevention and safety day arranged by the CSP in conjunction with the Prison Me! No Way Trust. The young people were treated as prisoners for the day and received talks about drugs, arson and online safety. They saw a real-life prison cell, took part in a street scene and heard from a prisoner serving a life sentence for murder. This day was aimed at young people who have been or are likely to become involved in anti-social behaviour (ASB) to serve as a deterrent, showing young people the potential consequences of their behaviour.



Quotes from teachers that attended the day

“Very beneficial for our pupils, all sessions have an impact on them. It is very well organised, with lots of helpful staff on hand during the day. Please keep up the good work, it is very useful and the pupils learn a lot throughout the day.”

“The pupils benefited and enjoyed the day more than they thought they would. They all found it very interesting.”

Safer School Parking

The CSP has been working with schools across the borough to deter parent's from stopping and parking dangerously and illegally outside their child's school. Officers from Hertfordshire Constabulary attended the schools to deliver safety talks to the children and banners were put up outside the schools to remind parents. Since January 2014, 13 schools have benefitted from the scheme.



Safer Streets

The multi-agency Safer Streets project, funded by the LSP has been running since 2011. The scheme was devised to improve community safety and people's quality of life. Teams of officers from organisations visit vulnerable households to talk about how local services can help them. Services that are offered include:



- Free crime prevention advice
- Free smoke detectors - plus free fitting
- Free first aid courses
- Help on leading a healthier life style
- Support for quitting smoking
- Information on how to become more involved in the local community

Throughout the year there were 12 Safer Street visits and 253 questionnaires completed with the following referrals being made

	Police	Fire	CAH	NHW	Red Cross	Medequip
No. referrals	64	95	52	151	78	36

Residents are offered a free first aid course and, during 2013/2014, 126 people attended the courses.

Watches

Across the borough residents have been encouraged to sign up to Neighbourhood Watch (NHW) - for households, Allotment Watch - for those who have allotments and Dog Watch - for dog walkers. All watches encourage members to look out for suspicious behaviour and report to the police.



Area	Number of roads	Number of roads covered with NHW
Borehamwood and Elstree	384	265
Potters Bar, Ridge, Shenley and South Mimms	318	238
Aldenham and Bushey	443	315

Thriving Communities

Over the past year we have been more innovative in our approach to working with the community to increase volunteering, provide advice and guidance and ensure people have a good living environment.

What are our priorities?

- To provide accessible opportunities to skills development and financial advice
- To increase community involvement and cohesion so people feel empowered and that they belong
- To enable people to take part in decision-making processes, increasing pride in communities and assisting ideas to thrive
- To support the development of volunteering, social enterprise and business opportunities

What have we done?

96 Shenley Road

96 Shenley Road is a new multi-purpose community centre comprising of a library, museum, youth service area, community meeting rooms and a hall.

Since the new facility opened in November 2013 there have been more than 40,000 visits in the first six months.

Youth Connexions One Stop Shop has had 488 attendances from 213 young people between January and March. Overall the evening projects have attracted 1,400 attendances by 294 young people.

The library has seen a significant increase in users following its relocation. In the period January to March this year it has had 34,329 visits which is an increase of 12,470 from the same period the previous year in its old location. It has seen 781 new members in that period and 26,550 book issues which is an increase of 5,454 issues from the same period last year.

In June it was reported that the museum has attracted 4,300 visits since it opened in November, and the volunteer base has grown from less than 10 to over 90 volunteers/friends supporting its activities.

There has been a variety of other bookings for the halls and meeting rooms which are administered by Hertsmere Leisure. In total, in terms of bookings rather than casual use, this has seen a further 2,500 visits.



Community Chest

The Community Chest provides small grants of up to £300 to community and voluntary organisations in Hertsmere for small purchases or activities. Community Action Hertsmere (CAH) manages the Chest on behalf of the LSP.



Economic Strategy

In June 2014 the Creative Hertsmere Economic Development Strategy and Business Charter were approved by Hertsmere’s Executive for adoption by the council as the main tool to achieving the goal of encouraging economic prosperity across the borough, as well as contributing to the other main goals of the council.



This followed a period of consultation where various stakeholders and partners were engaged, including the Local Strategic Partnership. A State of the Borough report was brought to the LSP in December 2013 to benchmark where Hertsmere was with regards to a variety of indicators which link to the local economy and wider economic picture. The Economic Development team presented to the LSP again in March 2014, bringing the Creative Hertsmere direction of travel document for comments from the partnership. These comments were extremely useful and used when drafting the final version of the strategy of which the LSP will be a key stakeholder and partner in delivering.



Hertsmere Connect was launched at the end of 2013 as a partnership between Hertsmere Borough Council and Watford & West Herts Chamber of Commerce to attract, connect and support businesses in Hertsmere.



Hertsmere Connect aims to improve prosperity for businesses in Hertsmere by:

- Encouraging relationships and generating greater engagement between local businesses by creating a strong business network
- Supporting the retention and growth of business
- Attracting and supporting new businesses relocating to Hertsmere
- Making Hertsmere a more business-friendly place to do business

In support of the partnership, Hertsmere Connect produced a State of Business Report to advise the council on the state of the business environment in Hertsmere, including size and structure; business environment, sectors and trends; employment, occupations and skillsets and made a number of recommendations based on its findings.

Since January 2014 Hertsmere Connect has delivered:

Since the launch Hertsmere Connect has delivered	
Number of events	3
Total attendees	200
Number of Hertsmere Connect members (as part of the Watford & West Herts Chamber of Commerce 463)	37

Hertsmere Homes

The council has embarked on an innovative programme of developing homes to make the most of its capital assets and help address the shortage of affordable housing and temporary accommodation.

The first development, a three-bedroom detached house at 83a Windmill Lane, Bushey Heath, was built on a plot of land owned by the council and was put up for sale. The sale stands to quadruple the original price of the vacant land.



The development cost £250,000 which means the council will have approximately an extra £180,000 to pump into further developments which will focus on social housing.

The council is planning the next part of the project which will be to build a row of four three-bedroom houses in Borehamwood using the profit from the first sale and some other funds. These homes will either be sold on to a housing association and used for social housing or we will use them ourselves to allocate as temporary accommodation for those on our housing register.

The council is also planning other developments around the borough including turning some disused toilets in Radlett into a café which will be leased out.



Inter-faith week

The national Inter-Faith Week provides a focal point, helping to open inter-faith activity up to a wider audience so that more people are made aware of the importance of this vital work and are able to participate in it. The aims of the week are to strengthen inter-faith relations at all levels, increase awareness of the different and distinct faiths in communities in the UK and increase the understanding between people of religious and non-religious beliefs.

During the week in 2013 several events were held, including:

- Mitzvah Day service to the community, a mass litter pick it up.
- Tea at the Reform Synagogue and the Groundforce Challenge, clearing undergrowth prior to an archaeological survey, followed by tea in the church.
- Community Action Hertsmere AGM with an inter-faith and communities theme.
- A Celebration of Faith saw faith schools and communities in Hertsmere come together to celebrate their different faiths and share their cultures with one another, through presentations, song, dance and drama.
- Bushey Inter-faith Forum presented 'Till Death Us Do Part', an exploration of end of life beliefs and customs in the churchhall of the Sacred Heart Catholic Church.

Prince's Trust

The Prince's Trust works in partnership to deliver engaging activities for young people aged 14 - 30 who are unemployed, (ex)offenders, those in or leaving care and those who have low education attainment. Activities have included:



- Working with WENTA to deliver the Promotion of Enterprise Programme - Forty one people have engaged with this activity.
- The Engagement of Enterprise Clients in Business Starts Loans & Grants - Six individuals have been supported with one person being given a grant and five receiving a loan.
- Seventeen delivery awards have been given to individuals.

Us Girls project

Us Girls project was devised by Hertsmere Borough Council and has been running female only projects in Borehamwood and Bushey. This project aims to help and support young women to build their confidence and self-esteem. Activities during the project include dancing, hair and make-up, creative arts and providing an opportunity for young woman to get together, have fun and learn something new. Twenty two girls attended the Bushey Us Girls project which took place at Bushey Academy. The Bushey Us Girls project ran from October 2013 to February 2014, with 13 classes and one full day of video and photo shoot. The young women that attended the project said it had helped to increase their confidence and self-esteem and that they will continue dancing, despite most not having taken a dance class before. 26 girls attended the Borehamwood Us Girls project between October 2013 and March 2014.



Annual Youth Conference

The 7th Annual Youth Conference took place in March with nearly 100 pupils from seven secondary schools visiting the Civic Offices. The pupils took part in an interactive quiz and show 'I'm in a democracy, get me out of here' and then quizzed borough councillors about their policies and principles during a 'speed meeting'. Participants also learned more about local democracy and how they would encourage other young people to vote.

Mentoring Project

Fourteen young people have joined the Bushey Mentoring project. This project was set up as partners and the police were receiving regular complaints from residents about young people loitering on the green space off Bushey Mill Lane in North Bushey. Some of the young people who signed up for the mentoring project are known to the police and/or have Anti-Social Behaviour Agreements (ABAs).

Thriving Families



The Thriving Families teams work with families who have:

- adults who are finding it hard to get work and are receiving out of work benefits
- children who are not attending school regularly or have been excluded repeatedly
- children involved in crime
- or families are getting into trouble because of their behaviour.

Families that are affected by two of these also have to be affected by:

- mental health difficulties
- adult learning difficulties or disabilities
- domestic abuse
- at risk of losing their home
- substance misuse
- and or failing to take up an early years education places their children are entitled to

The teams work with families to make sure they get the right support from the right people at the right time. The help we provide depends on each family's situation, but examples of issues they help with include:

- Parenting skills
- Improving school attendance
- Training to help find a job
- Housing problems
- Managing money and debt

Families can self-refer or agencies working with the families can refer with their consent.

Number of families supported

	Hertfordshire	Hertsmere
Total cases identified as eligible (since start of programme)	2169 (target was 1350)	178
New cases Year 2 Quarter 1 (April - June 2013)	100	12
New cases Year 2 Quarter 2 (July - Sept 2013)	104	17
New cases Year 2 Quarter 3 (October - December 2013)	318	22
New cases Year 2 Quarter 4 (January - March 2014)	179	14
Total families engaged (year 1 and 2)	1128	102

3. Future Partnership Working

Hertsmere Together's vision is to:

“shape a better future for the communities of Hertsmere through robust partnership working.”

To achieve this vision the LSP set out its new plan for future service improvements in Hertsmere across three strategic objectives, detailed within its Community Strategy 2013-2016. These include: Healthier Communities, Safer Communities and Thriving Communities. The LSP's themed sub-partnerships (Community Safety Partnership and Health and Wellbeing Partnership) will continue to put action plans together and develop innovative solutions to achieve the priorities.

We will continue to measure our performance and report back through these annual reports, which also provide an opportunity to showcase key successes and reflect on developments over the past year.

National Context

Many organisations are taking big strides to achieve savings, taking up new opportunities and bringing new ideas into action. Partners still face a period of change and are working with communities and stakeholders to re-design services and create new partnerships in order to shape the future of local services. This is being done in line with a number of new policies arising over the next year including the Care Act 2014, Better Care Fund, Community Infrastructure Levy and National Child Poverty Strategy.

Hertfordshire Context

Partnership working has continued to move forward in Hertfordshire, driven through the Local Enterprise Partnership and Health and Wellbeing Board.

Local Enterprise Partnership (LEP)

The LEP is a business-led organisation, aiming to make Hertfordshire the ideal environment for businesses to flourish and is responsible for growing the economy in Hertfordshire by removing barriers to growth and creating new jobs.



Following a wide public consultation, Hertfordshire's LEP has published its Growth Strategy: "Perfectly Placed for Business - A Strategy for Smart Economic Growth in Hertfordshire 2013-2030"

The strategy has three key priorities:

- Maintaining our global excellence in science and technology
- Harnessing our relationships with London (and elsewhere)
- Re-invigorating our places for the 21st Century

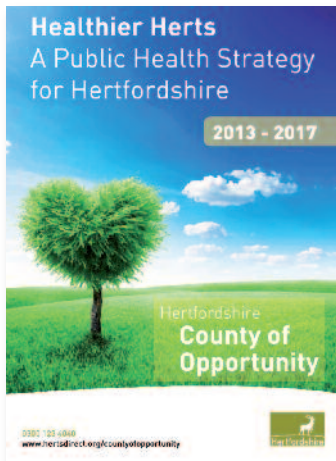
These priorities contribute to the vision that by *2030 Hertfordshire will be the leading economy at the heart of the UK's Golden Triangle.*

Health and Wellbeing Board

Health and Wellbeing Board
Hertfordshire

The official transfer of public health functions to the Local Authority, Hertfordshire County Council was completed in April 2013. The aim of the overarching Health and Wellbeing board is to make health and social care planning and decision making everyone's business. Its aims include:

- Development, interpretation and use of the Joint Strategic Needs Assessment to shape commissioning and spending plans
- Development and agreement of a health and wellbeing strategy
- Consideration of commissioning plans for health and social care
- Agreement of joint commissioning plans and oversight



Public Health Board

The Public Health Board is the lead group for the co-ordination of public health strategies and approaches across the country. It is a sub-committee of the Health and Wellbeing Board and has district representation. The board will also support the development of workforce skills for public health across partner organisations.

'Healthier Herts – a Public Health Strategy for Hertfordshire' envisions a healthy, happy Hertfordshire, where "everyone is born as healthy as possible, and lives a full, healthy and happy life". It was launched in 2013 and identifies four priorities which we will be working towards over the next year:

- Our residents live longer, healthier lives
- Our residents start life healthy and stay healthy
- We narrow the gap in life expectancy and health between the most and the least healthy
- We protect our communities from harm

A new Public Health Fund of £100,000 per annum has also been provided to district councils which will deliver a number of initiatives over the next two years and improve local public health outcomes.

Policy and Partnerships Network

This Officer Network's focus has changed over the last year and now has a wider remit considering Health and Wellbeing issues, emerging policy issues such as Localism, Economic Development and the Voluntary sector. It provides an avenue for sharing best practice and new ideas.



Local Context

The LSP's local objectives provide a clear framework to prioritise and deliver service improvements. Over the next year the LSP will be involved in a number of new and innovative projects to help redesign and improve services in partnership.



- The Health and Wellbeing Partnership alongside Hertsmere Borough Council will be launching a Health and Wellbeing Strategy to inform how we will spend the public health fund and improve public health in Hertsmere based on the Health Profiles and Joint Strategic Needs Assessment.
- We have launched an Economic Development Strategy and action plan to help set out exactly what we can and should be doing to develop and improve our local economy. This work is known as 'Creative Hertsmere – Think... Develop... Act...' due to our significant role in the creative industries with the council-owned Elstree Studios in Borehamwood to name just one link to the film, television, media and entertainment world.



- Hertsmere has been put forward as one of the two pilot areas along with Three Rivers to redesign services in partnership for adults with complex needs. This brings together both the Health and Wellbeing objectives and Community Safety objectives to tackle substance misuse, homelessness, mental health problems and chaotic lifestyles.
- The Compact Plus was produced by the LSP in April 2004 and built on the national compact between the Government and the voluntary and community sector. It was agreed at the LSP meeting in June that the Compact should be refreshed and renewed. The refreshed Compact will, again, build on the national compact. A small working group including the Council and voluntary sector organisations was identified to take this forward.



- The Community Safety Partnership will be implementing the community trigger, which will give victims and communities the right to demand that persistent anti-social behaviour is dealt with. It is a new provision in the Anti-social Behaviour, Crime and Policing Act which received Royal Assent in March 2014.
- The Advice Services Transition Fund project began in Hertsmere in 2013. The project is being led by the Citizen Advice Bureau in Hertsmere and aims to improve partnership working. The work will aim to ensure clients receive advice and information at the right time and right place, systems are in place to enable collaborative working and services are joined up.



4. Membership

LSP members have the authority to speak on behalf of their individual organisation and to commit resources in principle to achieve the work set out in the Community Strategy.

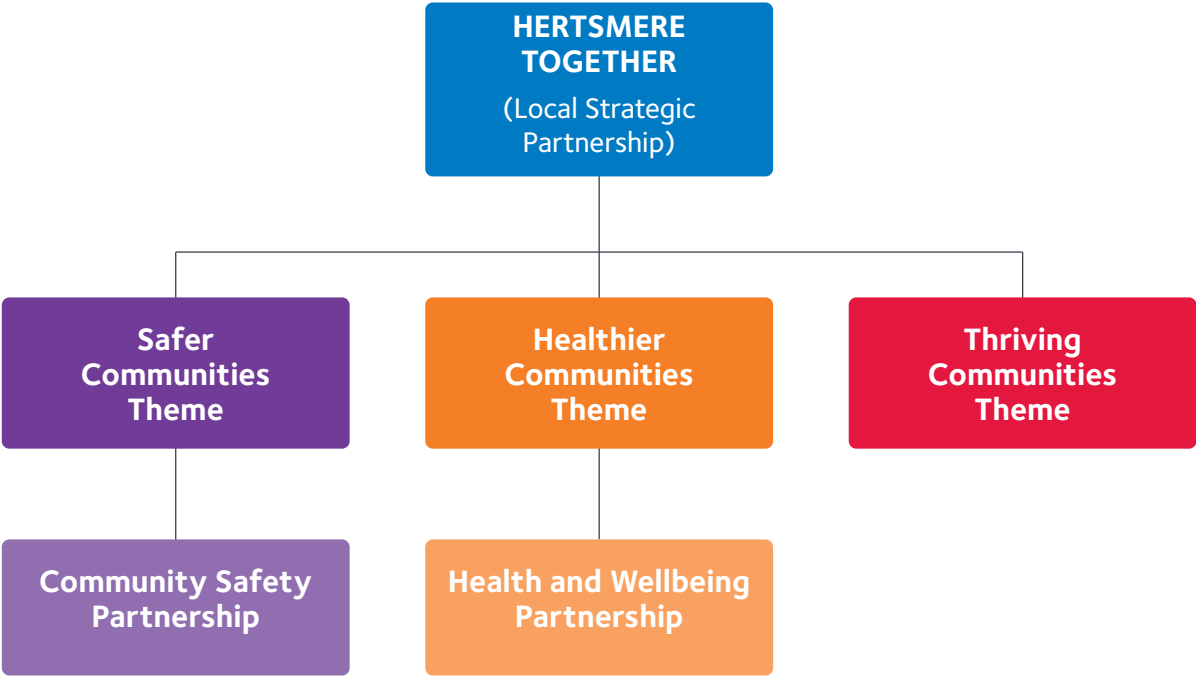
The membership as agreed for 2013/14 was:

Name	Organisation	Representing
Cllr Morris Bright	Hertsmere Borough Council	Chairman of LSP
Dr Donald Graham	Hertsmere Borough Council	Hertsmere Borough Council
Cllr Brenda Batten	Hertsmere Borough Council	Children and Young People/Health and Wellbeing
Cllr Seamus Quilty	Hertsmere Borough Council	Economic Development and Prosperity
Chris Pichon	WENTA	WENTA and Private Sector
Chis Wood	CAB	CAB and Voluntary Sector
Sue Pearlman	Community Action Hertsmere (CAH)	CAH and Voluntary Sector/ Empowerment and Engagement
Andrew Cobb	Aldwyck Housing Association	Registered Social Landlords
Ian Pluck	Hertsmere Leisure	Hertsmere Leisure
Chief Inspector	Hertfordshire Constabulary	Community Safety Partnership/Constabulary
Cllr Teresa Heritage	Hertfordshire County Council	Hertfordshire County Council
Rev Richard Leslie	Forum of Faiths	Forum of Faiths (Chair)
Zoe Hancock	Oaklands College	Higher Education
Dr Catherine Page	Hertsmere Commissioning Locality	Hertsmere Commissioning Locality
Earl Dutton	Hertfordshire County Council	Hertfordshire County Council
Tony Morrison	Hertfordshire Fire and Rescue	Hertfordshire Fire and Rescue
Concetta Kyriacou	Department for Working Pension (DWP)	Department for Working Pension (DWP)
Peter Evans	Aldenham Parish Council	Parish and Town Councils

Hertsmere Borough Council Officer Support

- Hilary Shade, Head of Partnerships and Community Engagement
- Rebecca Young, Health and Wellbeing Policy Manager
- Loran Kingston, Partnerships Support Officer

Hertsmere Together structure



Community Groups and Forums

Hertsmere Together, Local Strategic Partnership continues to meet quarterly. The Community Strategy 2013-2016 has three themes; Safer Communities, Healthier Communities and Thriving Communities. Items for each of these themes are usually considered at the meetings which are kept short. Both the Community Safety Partnership and Health and Wellbeing Partnership meet quarterly and are the main delivery partnerships for a number of projects each year. An annual report of activities, successes and plans for the future year is also produced. The Thriving Communities theme does not have a specific group which meets though a number of partnership activities are underway to work towards these priorities.

5. Performance Reward Grant

Performance Reward Grant			
	Total	Revenue	Capital
Year 1 Received	£511,187.17	£263,190.30	£247,996.87
Year 2 Received	£102,633.50	£71,843.50	£30,790.00
Money Spent 2010-2014	£481,854.00	£251,285.00	£230,569.00
Unallocated	£29,333.17	£11,905.30	£17,427.87

The remaining PRG will be allocated to initiatives to address our Community Strategy objectives.



6. Conclusion

During 2013/14 Hertsme Together continued to develop partnership working within the borough to further improve the delivery of services to residents. As this report has detailed, there are many examples of successful partnership projects that have taken place under the auspices of the LSP, which have all contributed to the delivery of more efficient and effective public services within Hertsme.

Hertsme Together partners are committed to working in partnership to deliver the best quality and most efficient services to the residents of Hertsme and will continue to implement and develop its Community Strategy in the coming year and refresh the priorities accordingly.

We welcome feedback on all aspects of the work of Hertsme Together. If you have any comments or would like to discuss this document please contact Hertsme Borough Council by email partnership.support@hertsme.gov.uk, telephone 020 8207 7801 or write to Civic Offices, Elstree Way, Borehamwood, Hertfordshire, WD6 1WA.



