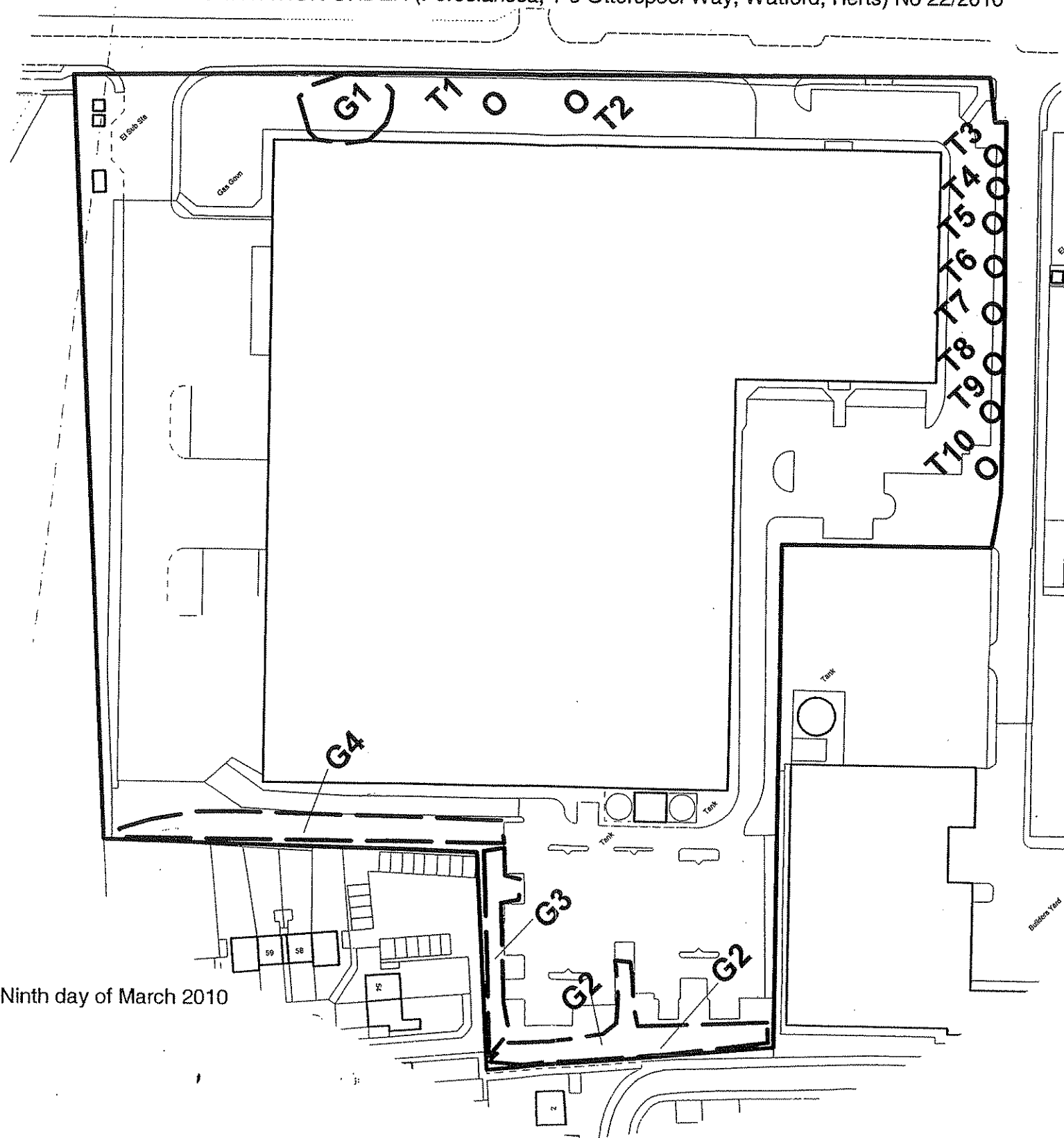
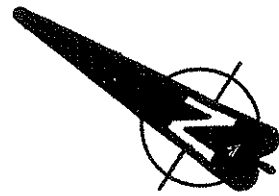


TOWN AND COUNTRY PLANNING (TREES) REGULATIONS 1999

Plan referred to in THE HERTSMERE TREE PRESERVATION ORDER (Porcelanosa, 1-6 Otterspool Way, Watford, Herts) No 22/2010



SCHEDULE OF TREES

No	Type
T1	Oak
T2	Pine
T3	Cherry
T4	Cherry
T5	Cherry
T6	Cherry
T7	Cherry
T8	Cherry
T9	Cherry
T10	Cherry
G1	3 x Oak
G2	1 x Oak, 9 x Yew, 4 x Pine, 9 x Lime
G3	2 x Oak, 2 x Yew, 2 x Ash, 36 x False Cypress
G4	9 x Oak, 24 x Yew, 13 x Cypress

This Order was confirmed by the Hertsmere Borough Council without modification on the SECOND day of JUNE in the year 2010

Signed on behalf of Hertsmere Borough Council Ninth day of March 2010

Authorised by the Council to sign in that behalf:

Neil Dyer

Print name and Position

Reproduced from the Ordnance Survey mapping with the permission of the Controller of Her Majesty's Stationery Office. © Crown Copyright reserved. Unauthorised reproduction infringes Crown copyright and may lead to prosecution or civil proceedings. Licence Number LA078239 Hertsmere, 2001.

Map Ref: TQ 1248,9791

Hertsmere Borough Council
Civic Offices
Borehamwood
Herts WD6 1WA

SCALE: 1:1250 DATE: 09/03/2010

DRAWN BY: SW CHECKED: *MS*

DRAWING NUMBER: 22/2010