

© John Rowe-Parr Architects.
Copyrights reserved.
notes
all settings must be checked on site
all levels are to be checked on site
all dimensions to be checked on site
drawing must be read in conjunction with relevant
specification clauses
dwg not to be used for land transfer
This drawing and its subject matter are the
confidential property of John Rowe-Parr Architects
and shall not be copied, reproduced, used or
disclosed to others without the prior written
authority of John Rowe-Parr Architects.

revision notes
A Issued for Planning 22.12.14

PLANNING

client
Taylor Wimpey
North Thames

project
Affinity Sutton
Elstree Way
Borehamwood

title
Location Plan

scale
1:1250 @ A1

drawn by
-

date
December 2014

checked by
cm

checked by
jrp

project number
796

drawing number
A / 000

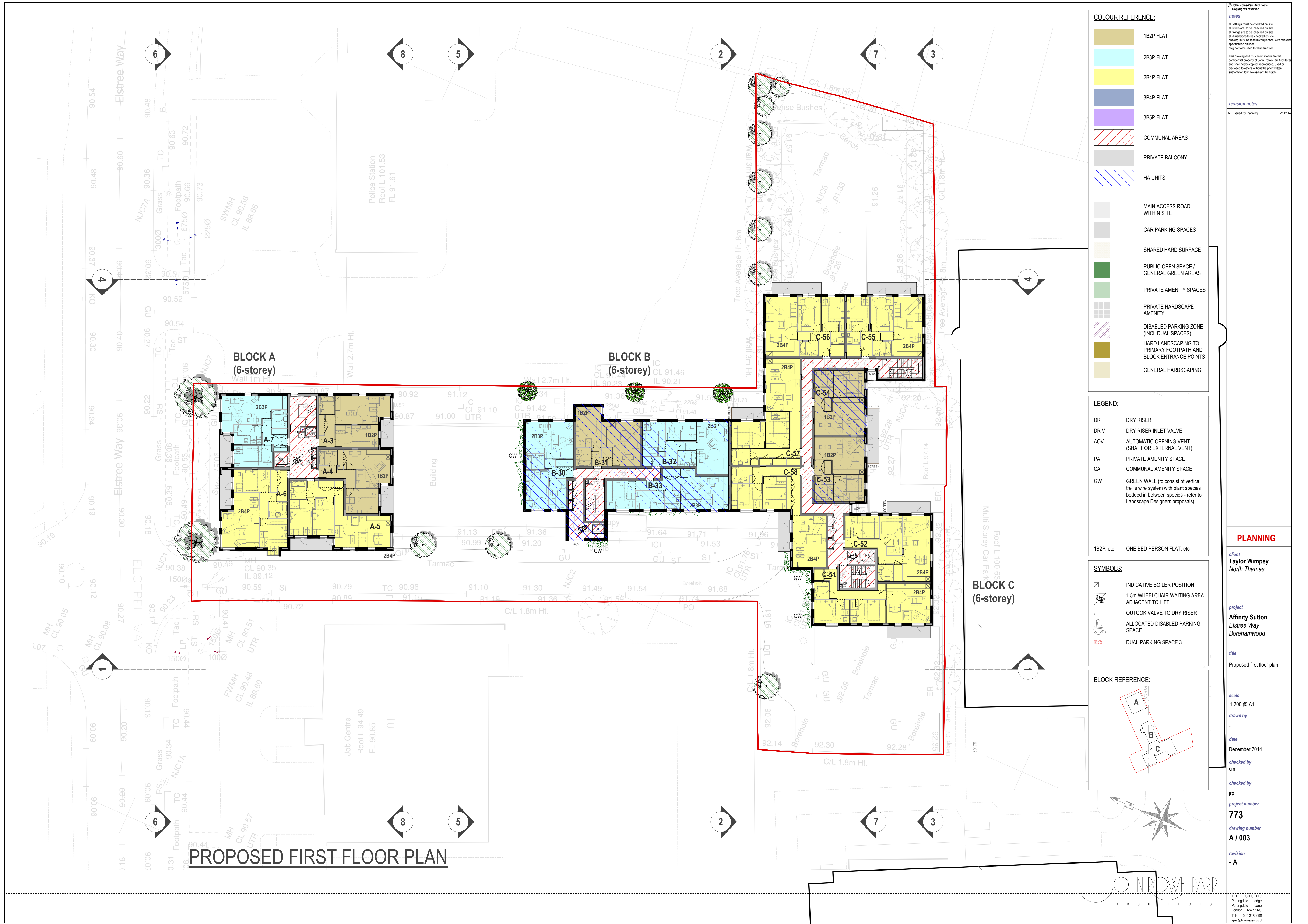
revision
- A

JOHN ROWE-PARR
ARCHITECTS

161 Rosebery Avenue
London, EC1R 4QX
Tel: 020 7278488
Fax: 020 72784388
jrp@johnroweparr.co.uk



<p><small>© John Rowe-Pan Architects. Copyrights reserved.</small></p> <p>notes</p> <p><small>all settings must be checked on site all levels are to be checked on site all fixings are to be checked on site all dimensions to be checked on site this drawing must be used in conjunction, with relevant specification drawings they not to be used for land transfer</small></p> <p><small>This drawing and its subject matter are the confidential property of John Rowe-Pan Architects and shall not be copied, reproduced, used or disclosed to others without the prior written authority of John Rowe-Pan Architects.</small></p>			
<p>revision notes</p>	<table><tr><td>Issued for Planning</td><td>22.12.14</td></tr></table>	Issued for Planning	22.12.14
Issued for Planning	22.12.14		
<p>PLANNING</p>			
<p>client Taylor Wimpey North Thames</p>			
<p>project Affinity Sutton Elstree Way Borehamwood</p>			
<p>title Proposed basement floor plan</p>			
<p>scale 1:200 @ A1</p>			
<p>drawn by -</p>			
<p>date December 2014</p>			
<p>checked by cm</p>			
<p>checked by jrp</p>			
<p>project number 7773</p>			
<p>drawing number A / 001</p>			
<p>revision - A</p>			
<p>THE STUDIO Partingale Lodge Partingale Lane London NW11 1NS Tel: 020 3550069 info@thestudio-jrp.co.uk</p>			



BLOCK A
(6-storey)

BLOCK B
(6-storey)

BLOCK C
(6-storey)

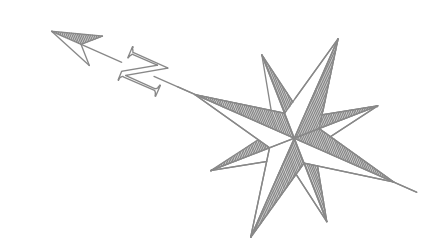
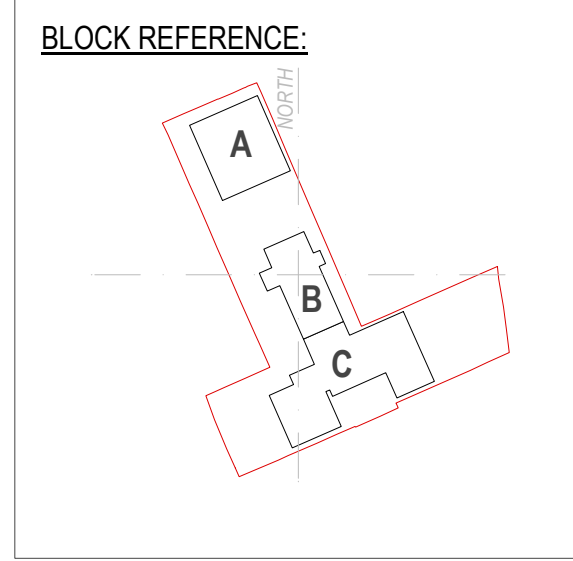
PROPOSED SECOND FLOOR PLAN

COLOUR REFERENCE:	
	1B2P FLAT
	2B3P FLAT
	2B4P FLAT
	3B4P FLAT
	3B5P FLAT
	COMMUNAL AREAS
	PRIVATE BALCONY
	HA UNITS
	MAIN ACCESS ROAD WITHIN SITE
	CAR PARKING SPACES
	SHARED HARD SURFACE
	PUBLIC OPEN SPACE / GENERAL GREEN AREAS
	PRIVATE AMENITY SPACES
	PRIVATE HARDSCAPE AMENITY
	DISABLED PARKING ZONE (INCL DUAL SPACES)
	HARD LANDSCAPING TO PRIMARY FOOTPATH AND BLOCK ENTRANCE POINTS
	GENERAL HARDSCAPING

LEGEND:	
DR	DRY RISER
DRIV	DRY RISER INLET VALVE
AOV	AUTOMATIC OPENING VENT (SHAFT OR EXTERNAL VENT)
PA	PRIVATE AMENITY SPACE
CA	COMMUNAL AMENITY SPACE
GW	GREEN WALL (to consist of vertical trellis wire system with plant species bedded in between species - refer to Landscape Designers proposals)

1B2P, etc ONE BED PERSON FLAT, etc

SYMBOLS:	
	INDICATIVE BOILER POSITION
	1.5m WHEELCHAIR WAITING AREA ADJACENT TO LIFT
	OUTLOOK VALVE TO DRY RISER
	ALLOCATED DISABLED PARKING SPACE
	DUAL PARKING SPACE 3



© John Rowe-Parr Architects. Copyrights reserved.

notes

all settings must be checked on site
all levels are to be checked on site
all findings are to be checked on site
all dimensions to be checked on site
drawing must be read in conjunction with relevant specification clauses
design not to be used for land transfer

This drawing and its subject matter are the confidential property of John Rowe-Parr Architects and shall not be copied, reproduced, used or disclosed to others without the prior written authority of John Rowe-Parr Architects.

revision notes

A	Issued for Planning	22.12.14
---	---------------------	----------

PLANNING

client
Taylor Wimpey
North Thames

project
Affinity Sutton
Elstree Way
Borehamwood

title
Proposed second floor plan

scale
1:200 @ A1

drawn by
-

date
December 2014

checked by
cm

checked by
jrp

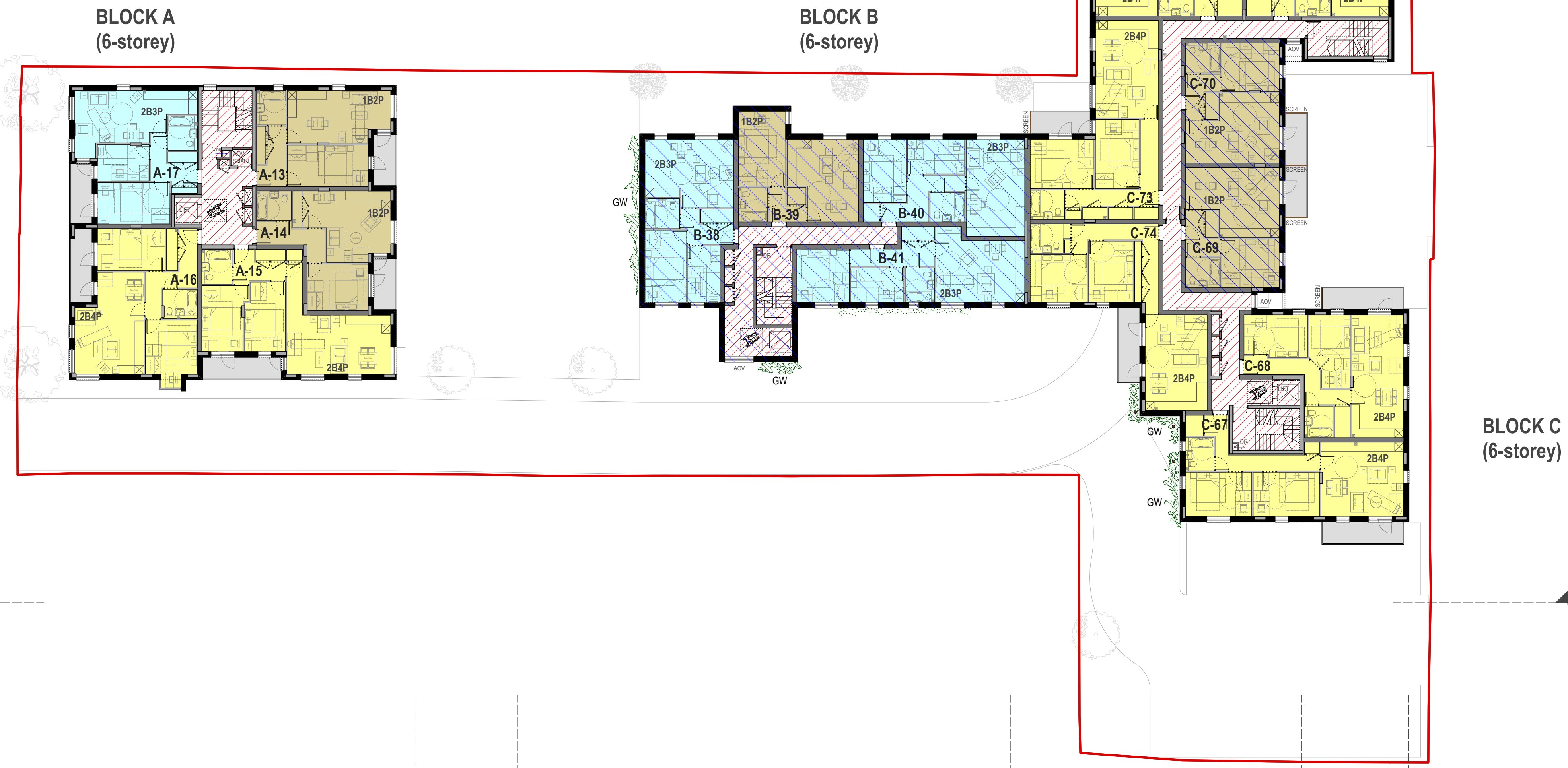
project number
773

drawing number
A / 004

revision
- A

JOHN ROWE-PARR
ARCHITECTS

Partingdale Lodge
Partingdale Lane
London NW11 1NS
Tel: 020 3150098
jrp@johnroweparr.co.uk



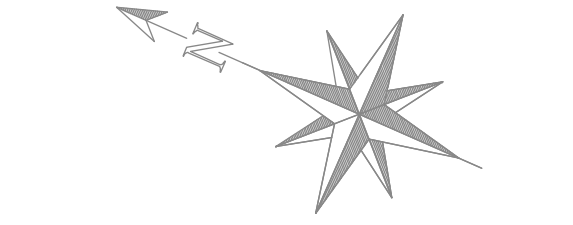
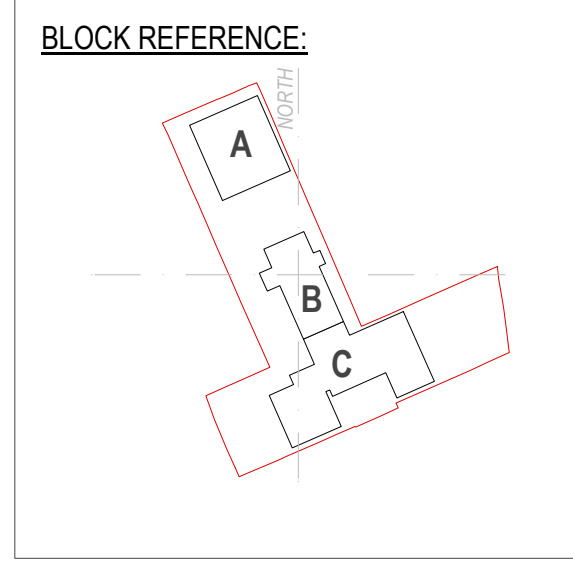
PROPOSED THIRD FLOOR PLAN

COLOUR REFERENCE:	
	1B2P FLAT
	2B3P FLAT
	2B4P FLAT
	3B4P FLAT
	3B5P FLAT
	COMMUNAL AREAS
	PRIVATE BALCONY
	HA UNITS
	MAIN ACCESS ROAD WITHIN SITE
	CAR PARKING SPACES
	SHARED HARD SURFACE
	PUBLIC OPEN SPACE / GENERAL GREEN AREAS
	PRIVATE AMENITY SPACES
	PRIVATE HARDSCAPE AMENITY
	DISABLED PARKING ZONE (INCL DUAL SPACES)
	HARD LANDSCAPING TO PRIMARY FOOTPATH AND BLOCK ENTRANCE POINTS
	GENERAL HARDSCAPING

LEGEND:	
DR	DRY RISER
DRIV	DRY RISER INLET VALVE
AOV	AUTOMATIC OPENING VENT (SHAFT OR EXTERNAL VENT)
PA	PRIVATE AMENITY SPACE
CA	COMMUNAL AMENITY SPACE
GW	GREEN WALL (to consist of vertical trellis wire system with plant species bedded in between species - refer to Landscape Designers proposals)

1B2P, etc ONE BED PERSON FLAT, etc

SYMBOLS:	
	INDICATIVE BOILER POSITION
	1.5m WHEELCHAIR WAITING AREA ADJACENT TO LIFT
	OUTLOOK VALVE TO DRY RISER
	ALLOCATED DISABLED PARKING SPACE
	DUAL PARKING SPACE 3



© John Rowe-Parr Architects.
Copyrights reserved.

NOTES

all settings must be checked on site
all levels are to be checked on site
all fittings are to be checked on site
all dimensions to be checked on site
drawing must be read in conjunction with relevant
specification clauses
design not to be used for land transfer

This drawing and its subject matter are the
confidential property of John Rowe-Parr Architects
and shall not be copied, reproduced, used or
disclosed to others without the prior written
authority of John Rowe-Parr Architects.

revision notes

A	Issued for Planning	22.12.14
---	---------------------	----------

PLANNING

client
Taylor Wimpey
North Thames

project
Affinity Sutton
Elstree Way
Borehamwood

title
Proposed third floor plan

scale
1:200 @ A1

drawn by
-

date
December 2014

checked by
cm

checked by
jrp

project number
773

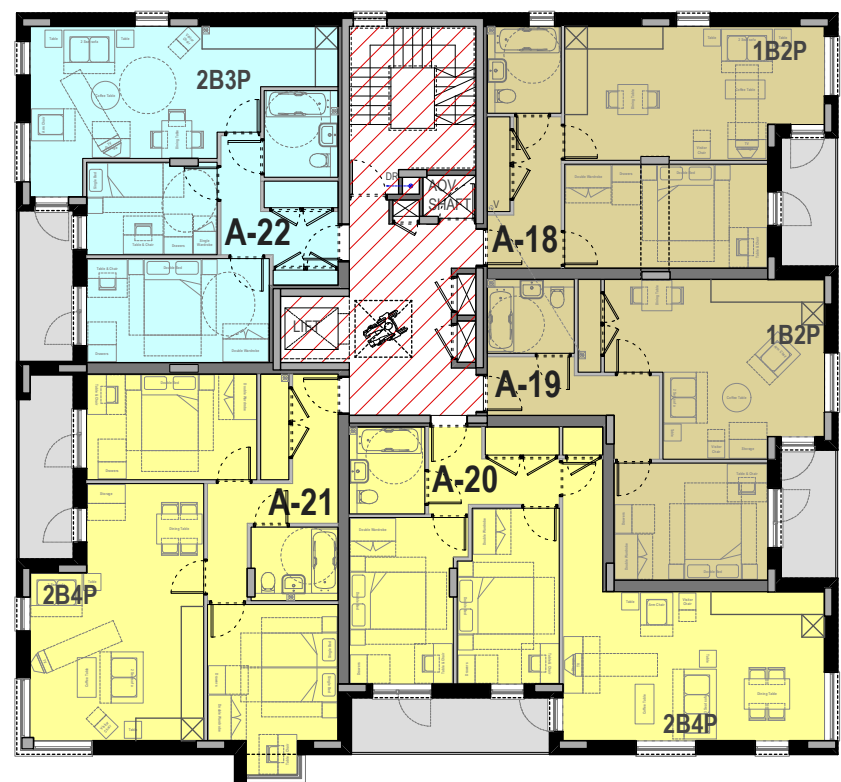
drawing number
A / 005

revision
- A

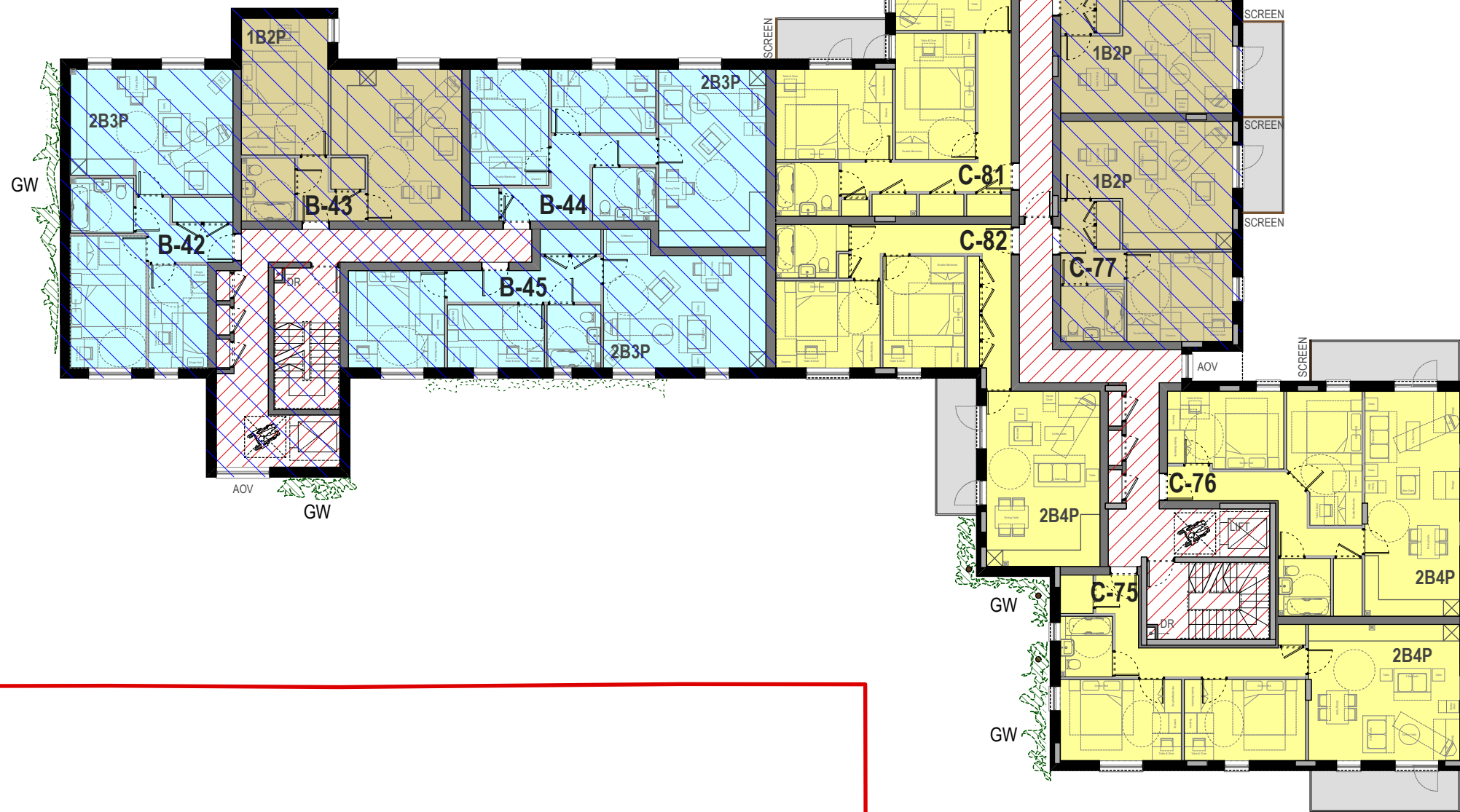
JOHN ROWE-PARR
ARCHITECTS

Partingdale Lodge
Partingdale Lane
London NW11 1NS
Tel: 020 3150098
jrp@johnrowe-parr.co.uk

BLOCK A
(6-storey)



BLOCK B
(6-storey)

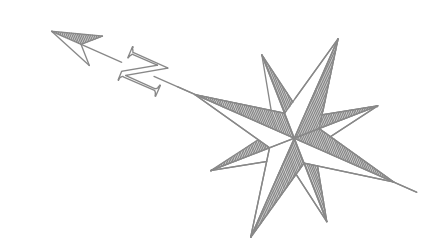
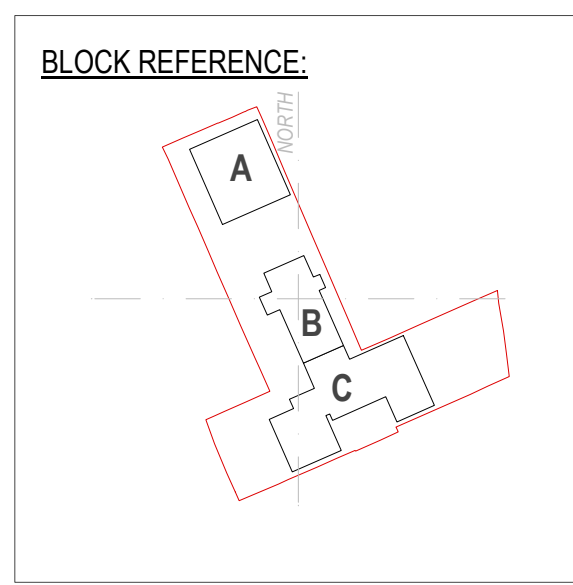


PROPOSED FOURTH FLOOR PLAN

COLOUR REFERENCE:	
	1B2P FLAT
	2B3P FLAT
	2B4P FLAT
	3B4P FLAT
	3B5P FLAT
	COMMUNAL AREAS
	PRIVATE BALCONY
	HA UNITS
	MAIN ACCESS ROAD WITHIN SITE
	CAR PARKING SPACES
	SHARED HARD SURFACE
	PUBLIC OPEN SPACE / GENERAL GREEN AREAS
	PRIVATE AMENITY SPACES
	PRIVATE HARDSCAPE AMENITY
	DISABLED PARKING ZONE (INCL DUAL SPACES)
	HARD LANDSCAPING TO PRIMARY FOOTPATH AND BLOCK ENTRANCE POINTS
	GENERAL HARDSCAPING

LEGEND:	
DR	DRY RISER
DRIV	DRY RISER INLET VALVE
AOV	AUTOMATIC OPENING VENT (SHAFT OR EXTERNAL VENT)
PA	PRIVATE AMENITY SPACE
CA	COMMUNAL AMENITY SPACE
GW	GREEN WALL (to consist of vertical trellis wire system with plant species bedded in between species - refer to Landscape Designers proposals)
1B2P, etc	ONE BED PERSON FLAT, etc

SYMBOLS:	
	INDICATIVE BOILER POSITION
	1.5m WHEELCHAIR WAITING AREA ADJACENT TO LIFT
	OUTLOOK VALVE TO DRY RISER
	ALLOCATED DISABLED PARKING SPACE
	DUAL PARKING SPACE 3



© John Rowe-Parr Architects.
Copyrights reserved.

notes

all settings must be checked on site
all levels are to be checked on site
all fittings are to be checked on site
all dimensions to be checked on site
drawing must be read in conjunction with relevant specification clauses
design not to be used for land transfer

This drawing and its subject matter are the confidential property of John Rowe-Parr Architects and shall not be copied, reproduced, used or disclosed to others without the prior written authority of John Rowe-Parr Architects.

revision notes

A	Issued for Planning	22.12.14
---	---------------------	----------

PLANNING

client
Taylor Wimpey
North Thames

project
Affinity Sutton
Elstree Way
Borehamwood

title
Proposed fourth floor plan

scale
1:200 @ A1

drawn by
-

date
December 2014

checked by
cm

checked by
jrp

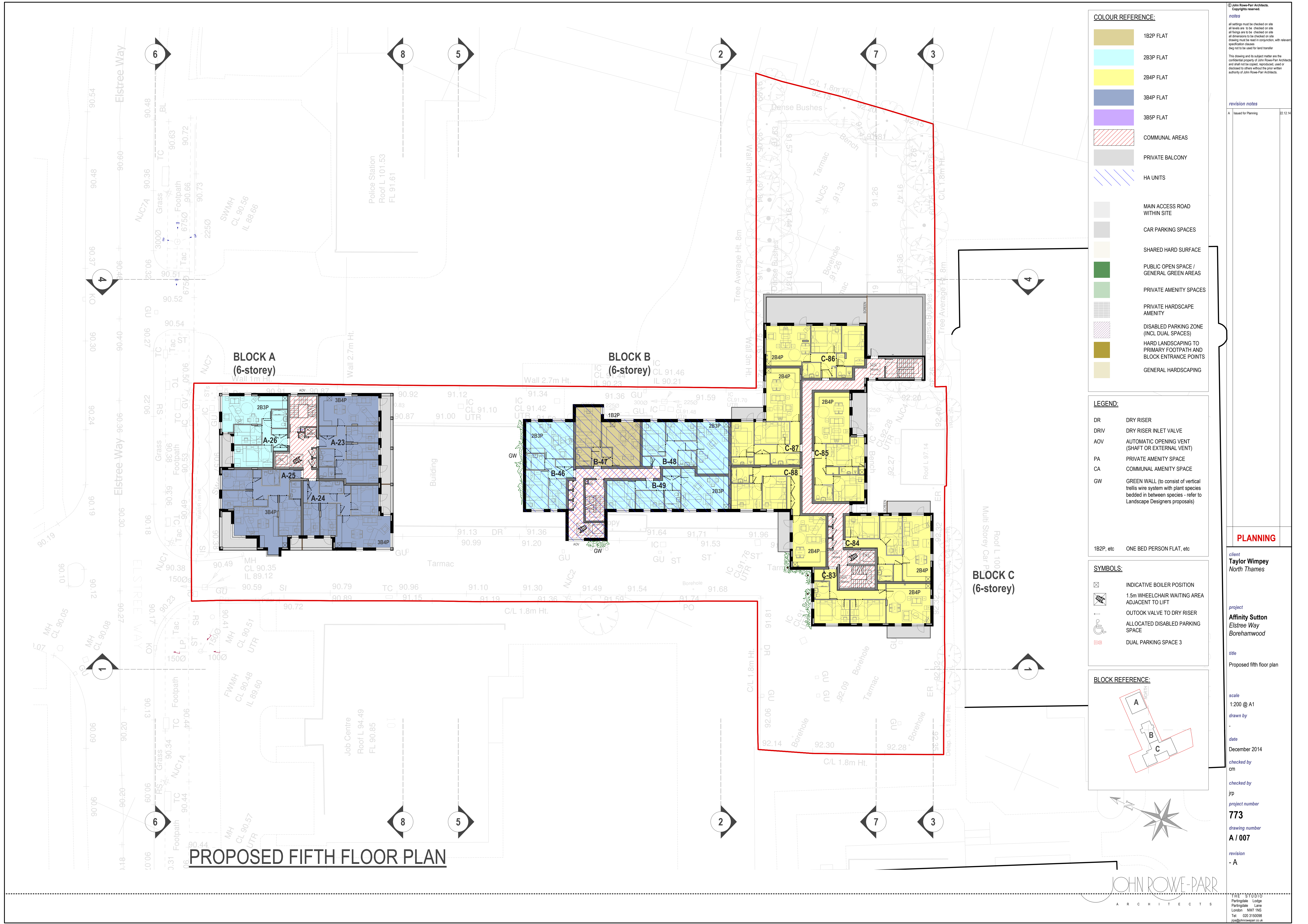
project number
773

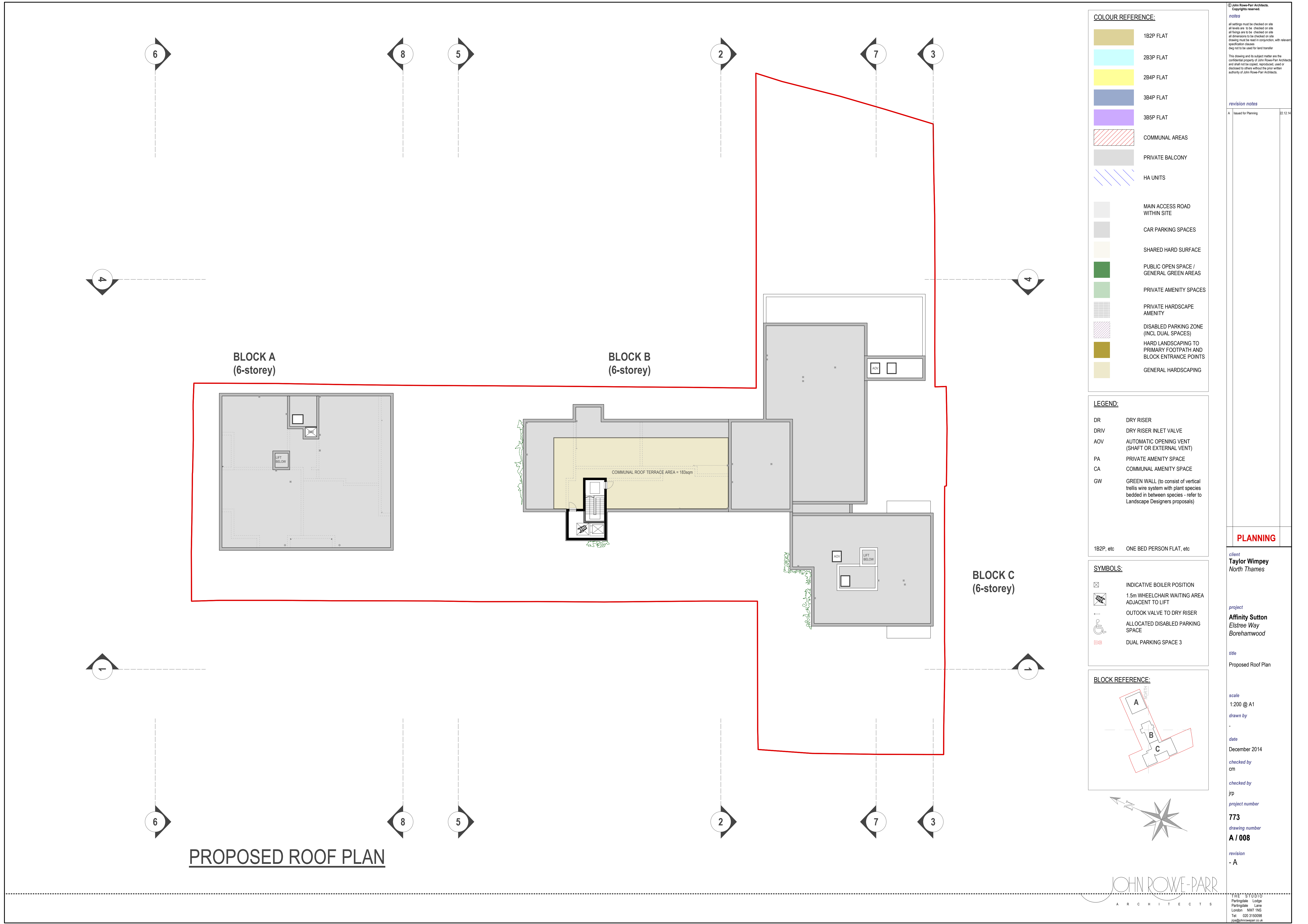
drawing number
A / 006

revision
- A

JOHN ROWE-PARR
ARCHITECTS

Partingdale Lodge
Partingdale Lane
London NW11 1NS
Tel: 020 3150098
jrp@johnroweparr.co.uk

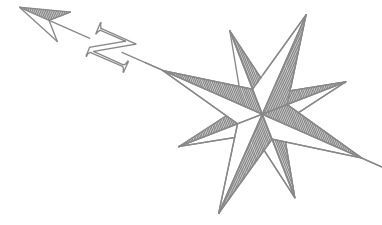
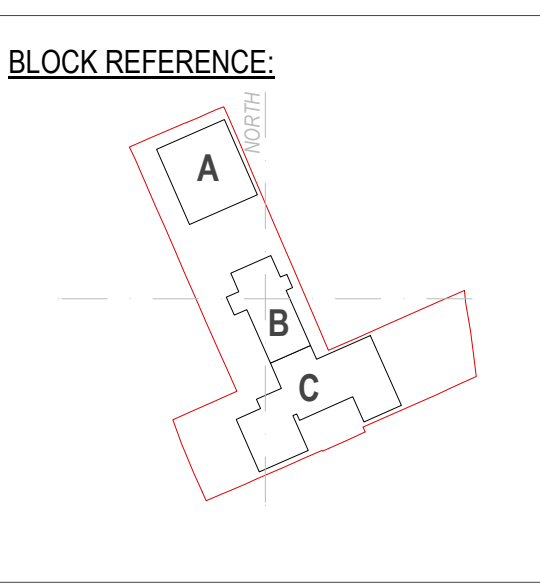




COLOUR REFERENCE:	
	1B2P FLAT
	2B3P FLAT
	2B4P FLAT
	3B4P FLAT
	3B5P FLAT
	COMMUNAL AREAS
	PRIVATE BALCONY
	HA UNITS
	MAIN ACCESS ROAD WITHIN SITE
	CAR PARKING SPACES
	SHARED HARD SURFACE
	PUBLIC OPEN SPACE / GENERAL GREEN AREAS
	PRIVATE AMENITY SPACES
	PRIVATE HARDSCAPE AMENITY
	DISABLED PARKING ZONE (INCL DUAL SPACES)
	HARD LANDSCAPING TO PRIMARY FOOTPATH AND BLOCK ENTRANCE POINTS
	GENERAL HARDSCAPING

LEGEND:	
DR	DRY RISER
DRIV	DRY RISER INLET VALVE
AOV	AUTOMATIC OPENING VENT (SHAFT OR EXTERNAL VENT)
PA	PRIVATE AMENITY SPACE
CA	COMMUNAL AMENITY SPACE
GW	GREEN WALL (to consist of vertical trellis wire system with plant species bedded in between species - refer to Landscape Designers proposals)
1B2P, etc	ONE BED PERSON FLAT, etc

SYMBOLS:	
	INDICATIVE BOILER POSITION
	1.5m WHEELCHAIR WAITING AREA ADJACENT TO LIFT
	OUTLOOK VALVE TO DRY RISER
	ALLOCATED DISABLED PARKING SPACE
	DUAL PARKING SPACE 3



JOHN ROWE-PARR
ARCHITECTS

© John Rowe-Parr Architects.
Copyrights reserved.

NOTES

all settings must be checked on site
all levels are to be checked on site
all fittings are to be checked on site
all dimensions to be checked on site
drawing must be read in conjunction with relevant specification clauses
design not to be used for land transfer

This drawing and its subject matter are the confidential property of John Rowe-Parr Architects and shall not be copied, reproduced, used or disclosed to others without the prior written authority of John Rowe-Parr Architects.

revision notes

A	Issued for Planning	22.12.14
---	---------------------	----------

PLANNING

client
Taylor Wimpey
North Thames

project
Affinity Sutton
Elstree Way
Borehamwood

title
Proposed Roof Plan

scale
1:200 @ A1

drawn by
-

date
December 2014

checked by
cm

checked by
jrp

project number
773

drawing number
A / 008

revision
- A

Partingdale Lodge
Partingdale Lane
London NW11 1NS
Tel: 020 3150098
jrp@johnrowe-parr.co.uk

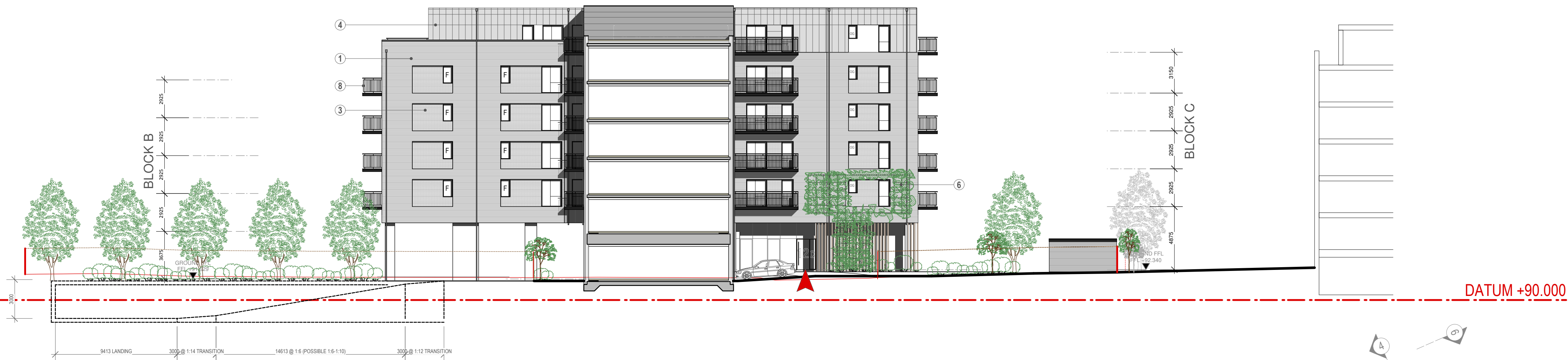
MATERIAL LEGEND:

- 1 BRICK FACING
- 2 BRICK FACING PANEL OF EXTRUDED COURSING
- 3 RECESSED BRICK FACING PANEL
- 4 RECESSED HPL CLADDING BOARDS
- 5 RECESSED HORIZONTALLY LAID HPL CLADDING BOARDS
- 6 GREEN WALL WIRE TRELLIS SYSTEM
- 7 GLASS BALUSTRADE WITH STEEL HANDRAIL FRAME
- 8 POWDER COATED METAL BALUSTRADE - DARK GREY
- 9 PROFILE PFC CHANNEL TO BALCONY FASCIA - DARK GREY
- 11 WINDOW / CONTRAST PANELS

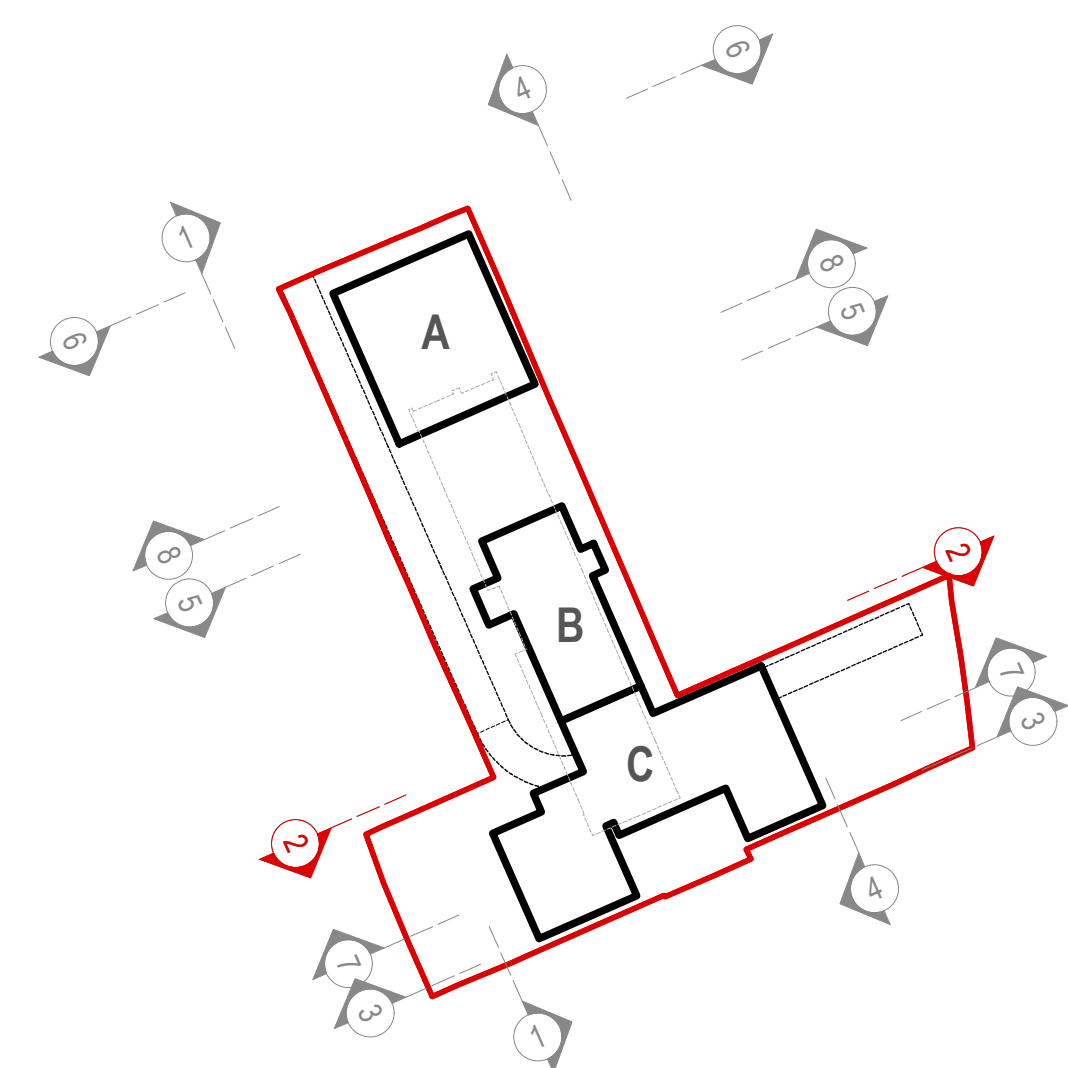
NOTES:

- Rain water pipes and soil and vent pipes are shown as indicative until construction drawings are started.

-



ELEVATION / SECTION 2: South Section / Elevation through Block C



© John Rowe-Parr Architects.
Copyrights reserved.

notes

all settings must be checked on site
all levels are to be checked on site
all fittings are to be checked on site
all dimensions to be checked on site
drawing must be read in conjunction with relevant
specification clauses
design not to be used for land transfer

This drawing and its subject matter are the
confidential property of John Rowe-Parr Architects
and shall not be copied, reproduced, used or
disclosed to others without the prior written
authority of John Rowe-Parr Architects.

revision notes

A Issued for Planning 22.12.14

PLANNING

client
Taylor Wimpey
North Thames

project
Affinity Sutton
Elstree Way
Borehamwood

title
Proposed Elevation / Section
2

scale
1:200 @ A1

drawn by

-

date
December 2014

checked by
cm

checked by
jrp

project number
773

drawing number
A / 021

revision
- A

JOHN ROWE-PARR
ARCHITECTS

STUDIO
Partingale Lodge
Partingale Lane
London NW7 1NS
Tel: 020 3150506
jrp@johnroweparr.co.uk

MATERIAL LEGEND:

- 1 BRICK FACING
- 2 BRICK FACING PANEL OF EXTRUDED COURSING
- 3 RECESSED BRICK FACING PANEL
- 4 RECESSED HPL CLADDING BOARDS
- 5 RECESSED HORIZONTALLY LAID HPL CLADDING BOARDS
- 6 GREEN WALL WIRE TRELLIS SYSTEM
- 7 GLASS BALUSTRADE WITH STEEL HANDRAIL FRAME
- 8 POWDER COATED METAL BALUSTRADE - DARK GREY
- 9 PROFILE PFC CHANNEL TO BALCONY FASCIA - DARK GREY
- 11 WINDOW / CONTRAST PANELS

NOTES:

- Rain water pipes and soil and vent pipes are shown as indicative until construction drawings are started.

© John Rowe-Parr Architects.
Copyrights reserved.

notes

all settings must be checked on site
all levels are to be checked on site
all fixings are to be checked on site
all dimensions to be checked on site
drawing must be read in conjunction with relevant specification clauses
design not to be used for land transfer

This drawing and its subject matter are the confidential property of John Rowe-Parr Architects and shall not be copied, reproduced, used or disclosed to others without the prior written authority of John Rowe-Parr Architects.

revision notes

A Issued for Planning 22.12.14

PLANNING

client
Taylor Wimpey
North Thames

project
Affinity Sutton
Elstree Way
Borehamwood

title
Proposed Elevation 3

scale
1:200 @ A1

drawn by
-

date
December 2014

checked by
cm

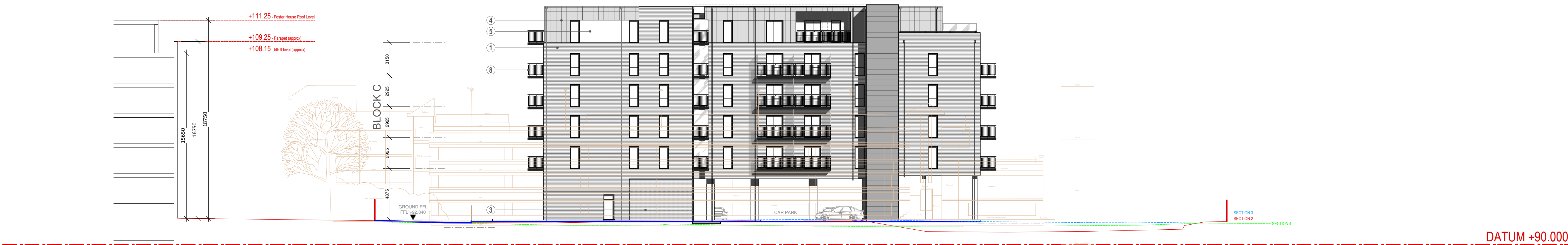
checked by
jrp

project number
773

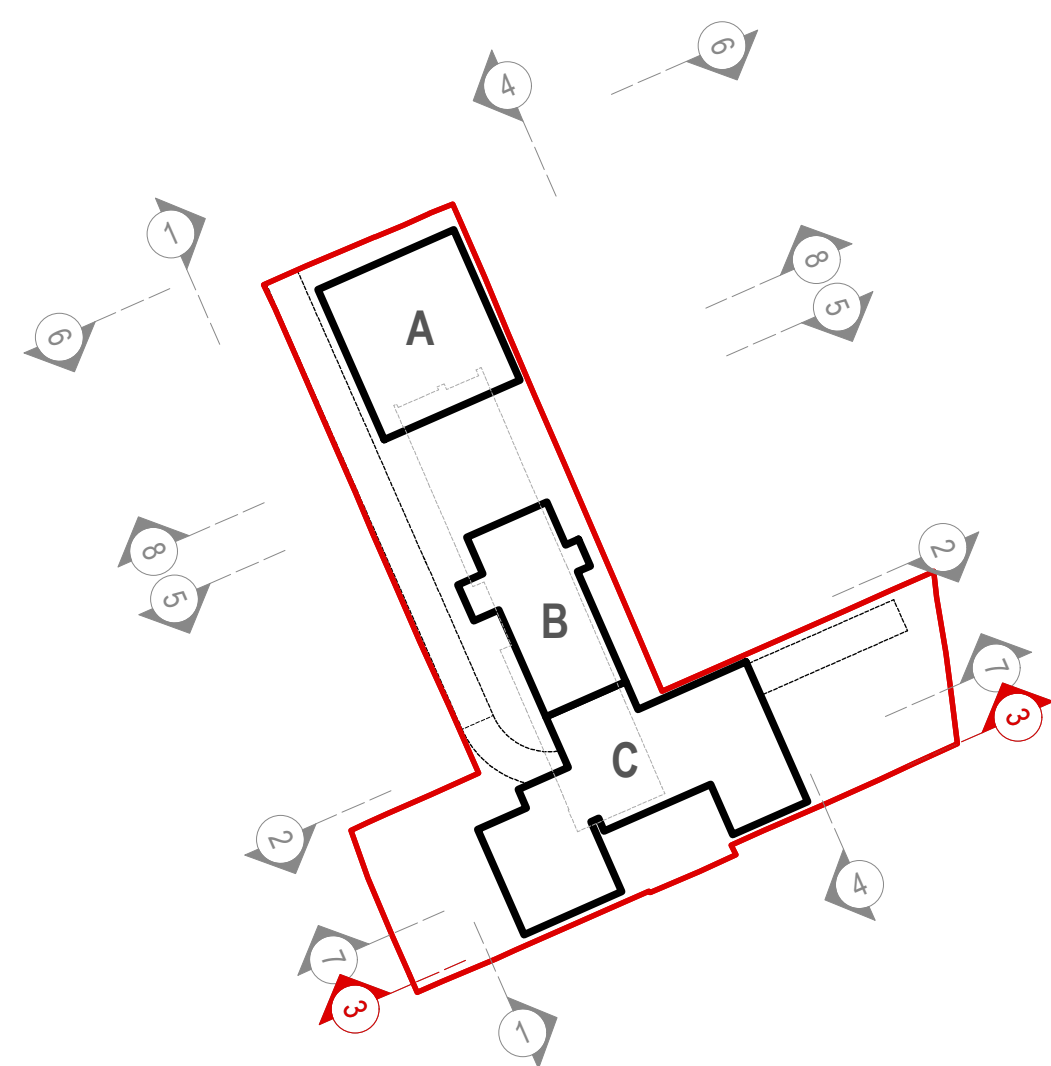
drawing number
A / 022

revision
- A

JOHN ROWE-PARR
ARCHITECTS
Parrington Lane
London NW7 1NS
Tel: 020 3155096
jrp@johnroweparr.co.uk



ELEVATION 3: North Rear Elevation to Block C



JOHN ROWE-PARR
ARCHITECTS

MATERIAL LEGEND:

- 1 BRICK FACING
- 2 BRICK FACING PANEL OF EXTRUDED COURSING
- 3 RECESSED BRICK FACING PANEL
- 4 RECESSED HPL CLADDING BOARDS
- 5 RECESSED HORIZONTALLY LAID HPL CLADDING BOARDS
- 6 GREEN WALL WIRE TRELLIS SYSTEM
- 7 GLASS BALUSTRADE WITH STEEL HANDRAIL FRAME
- 8 POWDER COATED METAL BALUSTRADE - DARK GREY
- 9 PROFILE PFC CHANNEL TO BALCONY FASCIA - DARK GREY
- 11 WINDOW / CONTRAST PANELS

NOTES:

- Rain water pipes and soil and vent pipes are shown as indicative until construction drawings are started.

© John Rowe-Parr Architects.
Copyrights reserved.

notes

all settings must be checked on site
all levels are to be checked on site
all fixings are to be checked on site
all dimensions are to be checked on site
drawing must be read in conjunction with relevant specification clauses
design not to be used for land transfer

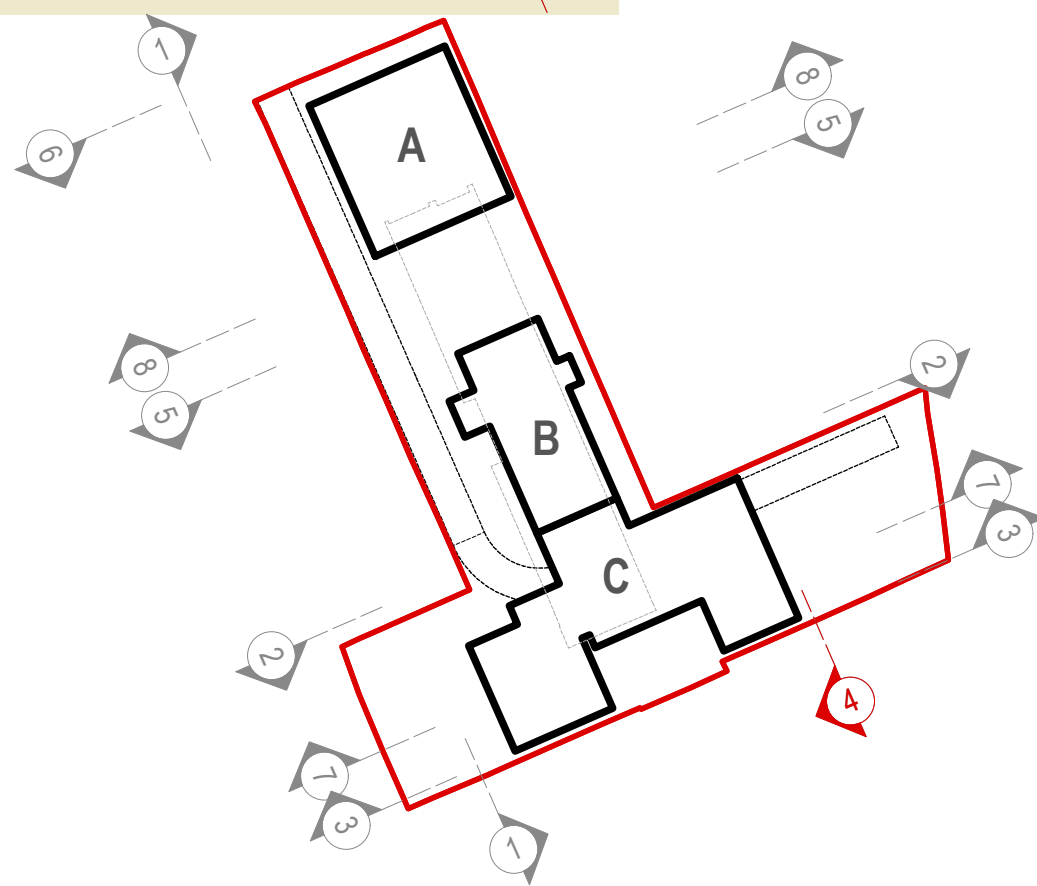
This drawing and its subject matter are the confidential property of John Rowe-Parr Architects and shall not be copied, reproduced, used or disclosed to others without the prior written authority of John Rowe-Parr Architects.

revision notes

A Issued for Planning 22.12.14



ELEVATION 4: West Elevation



PLANNING

client
Taylor Wimpey
North Thames

project
Affinity Sutton
Elstree Way
Borehamwood

title
Proposed Elevation 4

scale
1:200 @ A1

drawn by
-

date
December 2014

checked by
cm

checked by
jrp

project number
773

drawing number
A / 023

revision
- A

JOHN ROWE-PARR
ARCHITECTS

STUDIO
Partingale Lodge
Partingale Lane
London NW7 1NS
Tel: 020 3150098
jrp@johnrowe-parr.co.uk

MATERIAL LEGEND:

- 1 BRICK FACING
- 2 BRICK FACING PANEL OF EXTRUDED COURSING
- 3 RECESSED BRICK FACING PANEL
- 4 RECESSED HPL CLADDING BOARDS
- 5 RECESSED HORIZONTALLY LAID HPL CLADDING BOARDS
- 6 GREEN WALL WIRE TRELLIS SYSTEM
- 7 GLASS BALUSTRADE WITH STEEL HANDRAIL FRAME
- 8 POWDER COATED METAL BALUSTRADE - DARK GREY
- 9 PROFILE PFC CHANNEL TO BALCONY FASCIA - DARK GREY
- 11 WINDOW / CONTRAST PANELS

NOTES:

- Rain water pipes and soil and vent pipes are shown as indicative until construction drawings are started.

© John Rowe-Parr Architects.
Copyrights reserved.

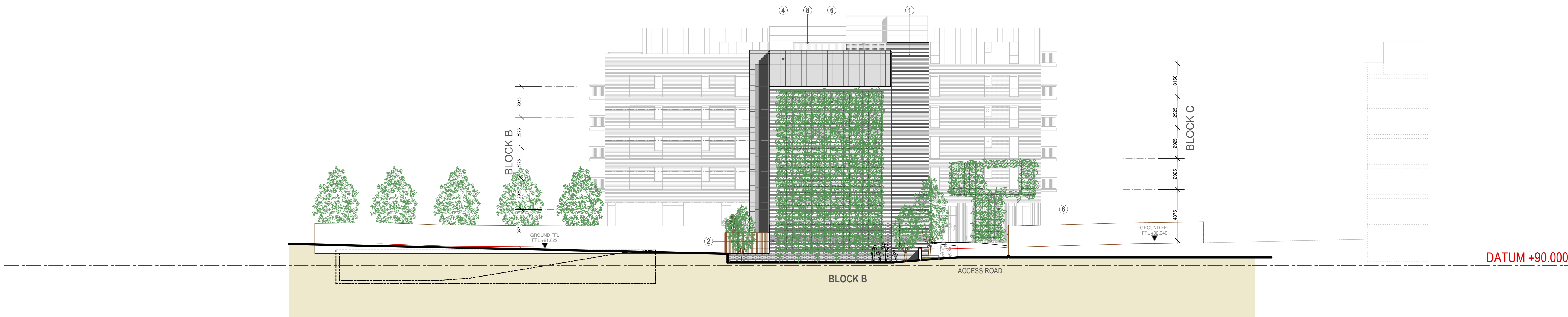
notes

all settings must be checked on site
all levels are to be checked on site
all fittings are to be checked on site
all dimensions to be checked on site
drawing must be read in conjunction with relevant specification clauses
design not to be used for land transfer

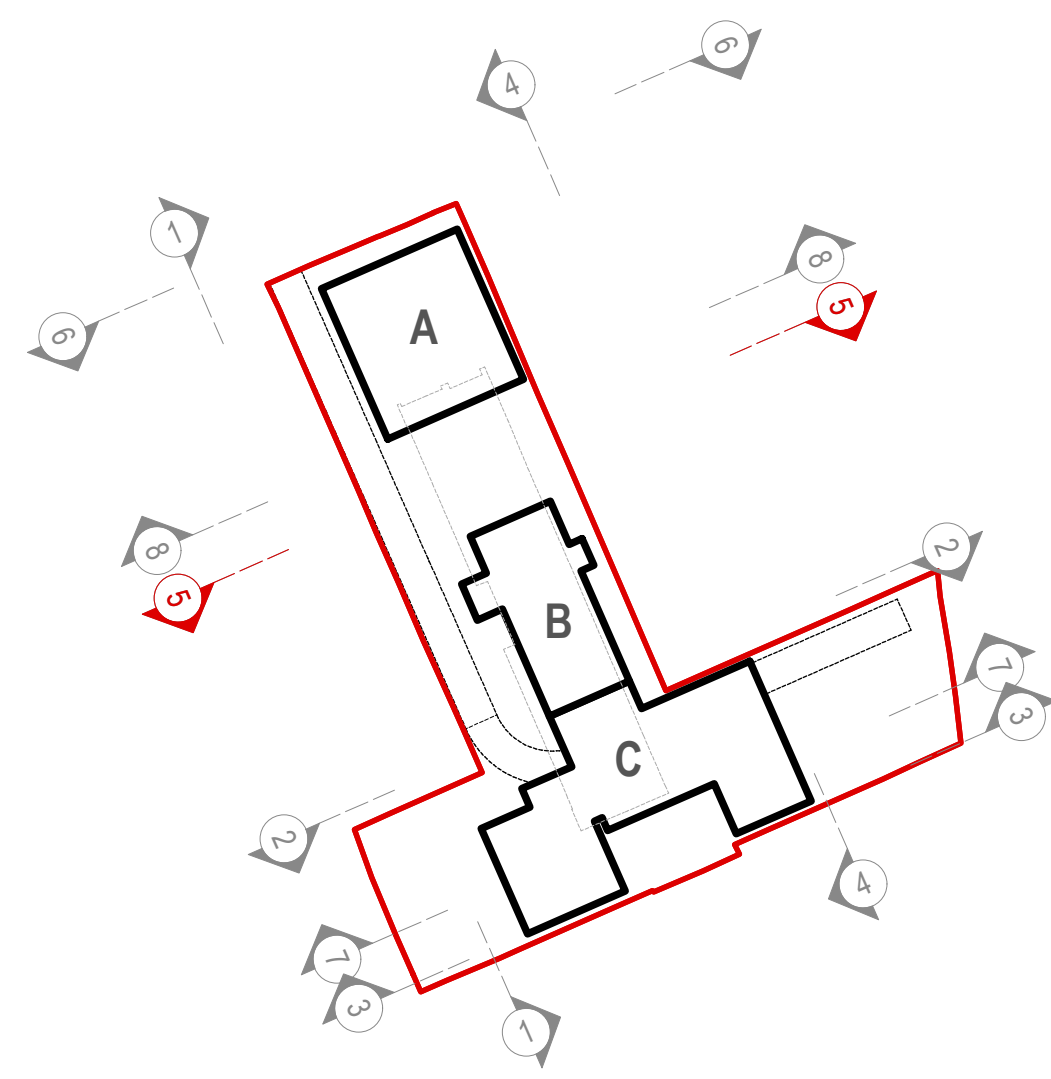
This drawing and its subject matter are the confidential property of John Rowe-Parr Architects and shall not be copied, reproduced, used or disclosed to others without the prior written authority of John Rowe-Parr Architects.

revision notes

A Issued for Planning 22.12.14



ELEVATION 5: South Elevation - Block B



PLANNING

client
Taylor Wimpey
North Thames

project
Affinity Sutton
Elstree Way
Borehamwood

title
Proposed Elevation 5

scale
1:200 @ A1

drawn by
-

date
December 2014

checked by
cm

checked by
jrp

project number
796

drawing number
A / 024

revision
- A

JOHN ROWE-PARR
ARCHITECTS

STUDIO
Partingdale Lodge
Partingdale Lane
London NW7 1NS
Tel: 020 3155096
jrp@johnroweparr.co.uk

MATERIAL LEGEND:

- 1 BRICK FACING
- 2 BRICK FACING PANEL OF EXTRUDED COURSING
- 3 RECESSED BRICK FACING PANEL
- 4 RECESSED HPL CLADDING BOARDS
- 5 RECESSED HORIZONTALLY LAID HPL CLADDING BOARDS
- 6 GREEN WALL WIRE TRELLIS SYSTEM
- 7 GLASS BALUSTRADE WITH STEEL HANDRAIL FRAME
- 8 POWDER COATED METAL BALUSTRADE - DARK GREY
- 9 PROFILE PFC CHANNEL TO BALCONY FASCIA - DARK GREY
- 11 WINDOW / CONTRAST PANELS

NOTES:

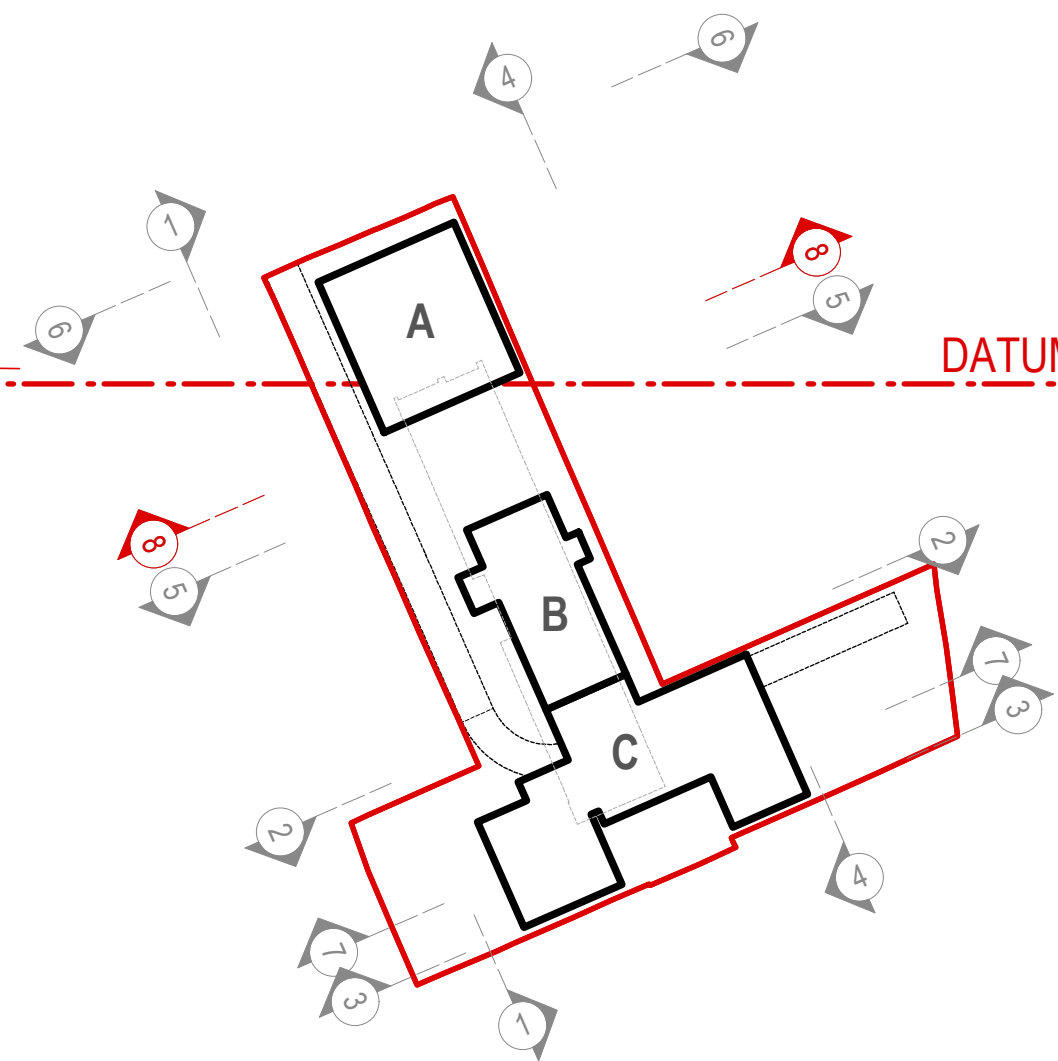
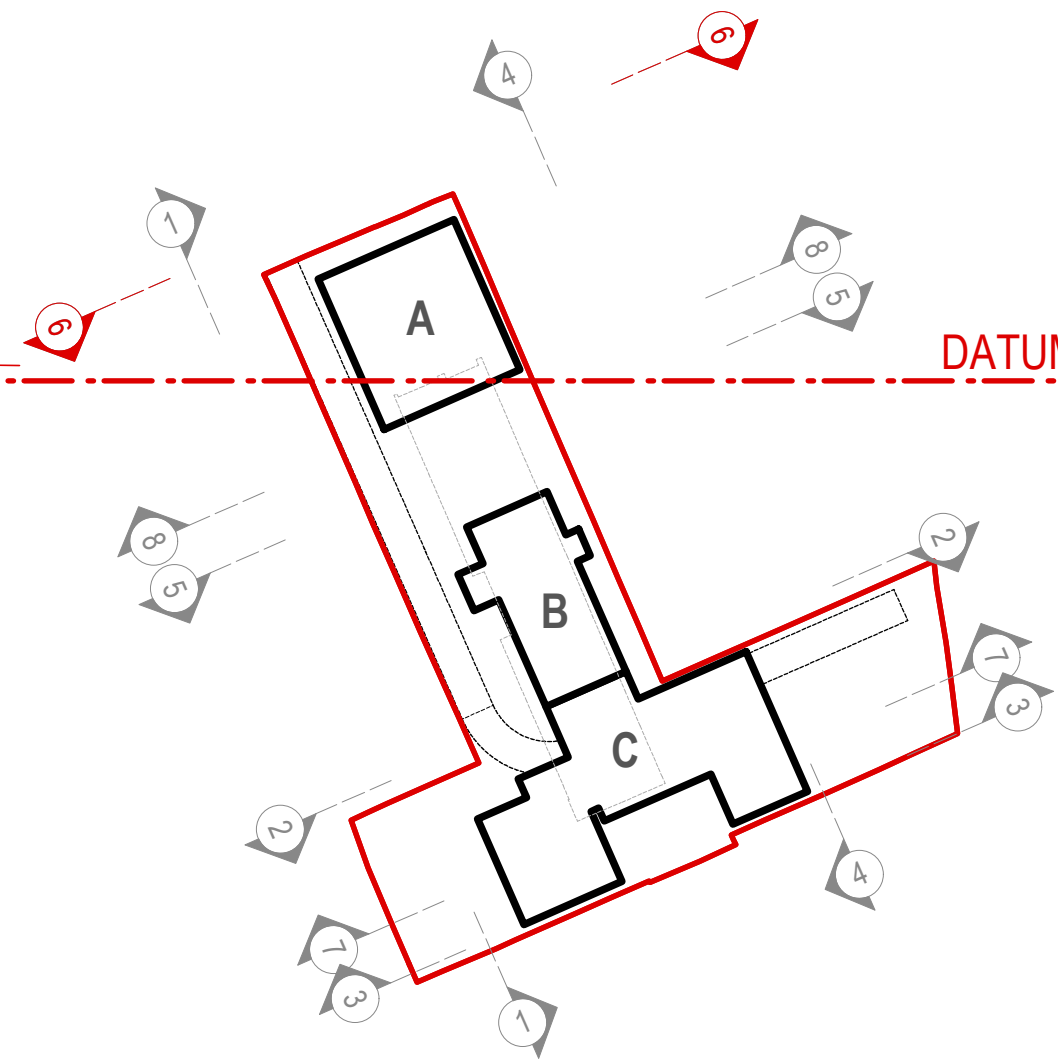
- Rain water pipes and soil and vent pipes are shown as indicative until construction drawings are started.



ELEVATION 6: Elstree Way



ELEVATION 8: Rear elevation to Block A



JOHN ROWE-PARR
ARCHITECTS

© John Rowe-Parr Architects.
Copyrights reserved.

notes

all settings must be checked on site
all levels are to be checked on site
all fittings are to be checked on site
all dimensions to be checked on site
drawing must be read in conjunction with relevant
specification clauses
do not to be used for land transfer

This drawing and its subject matter are the
confidential property of John Rowe-Parr Architects
and shall not be copied, reproduced, used or
disclosed to others without the prior written
authority of John Rowe-Parr Architects.

revision notes

A Issued for Planning 22.12.14

PLANNING

client
Taylor Wimpey
North Thames

project
Affinity Sutton
Elstree Way
Borehamwood

title
Proposed Elevation 6

scale
1:200 @ A1

drawn by
-

date
December 2014

checked by
cm

checked by
jrp

project number
773

drawing number
A / 025

revision
- A

JOHN ROWE-PARR
ARCHITECTS
Parrington Lane
London NW7 1NS
Tel: 020 3155096
jrp@johnrowe-parr.co.uk

MATERIAL LEGEND:

- 1 BRICK FACING
- 2 BRICK FACING PANEL OF EXTRUDED COURSING
- 3 RECESSED BRICK FACING PANEL
- 4 RECESSED HPL CLADDING BOARDS
- 5 RECESSED HORIZONTALLY LAID HPL CLADDING BOARDS
- 6 GREEN WALL WIRE TRELLIS SYSTEM
- 7 GLASS BALUSTRADE WITH STEEL HANDRAIL FRAME
- 8 POWDER COATED METAL BALUSTRADE - DARK GREY
- 9 PROFILE PFC CHANNEL TO BALCONY FASCIA - DARK GREY
- 11 WINDOW / CONTRAST PANELS

NOTES:

- Rain water pipes and soil and vent pipes are shown as indicative until construction drawings are started.

© John Rowe-Parr Architects.
Copyrights reserved.

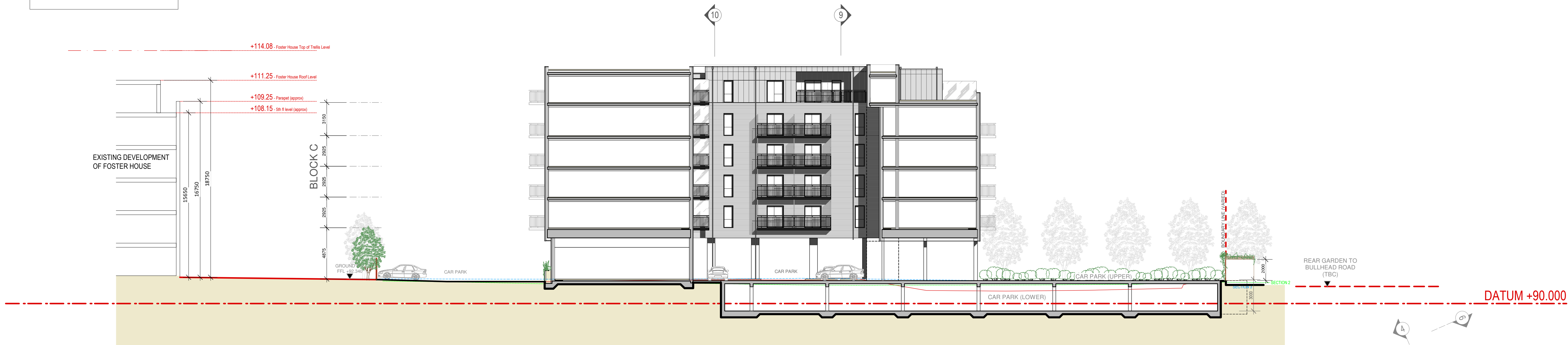
notes

all settings must be checked on site
all levels are to be checked on site
all fittings are to be checked on site
all dimensions to be checked on site
drawing must be read in conjunction with relevant specification clauses
design not to be used for tender

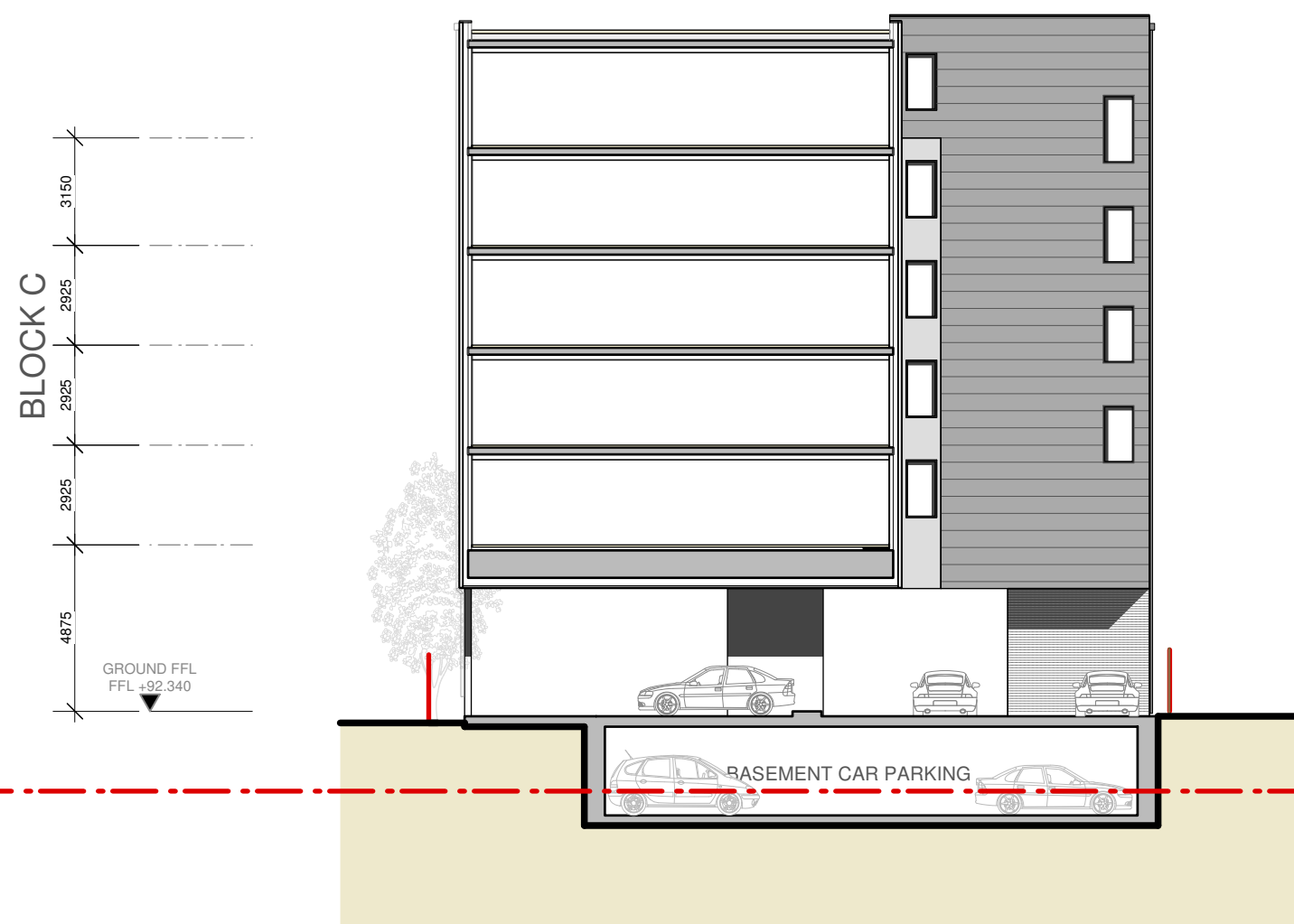
This drawing and its subject matter are the confidential property of John Rowe-Parr Architects and shall not be copied, reproduced, used or disclosed to others without the prior written authority of John Rowe-Parr Architects.

revision notes

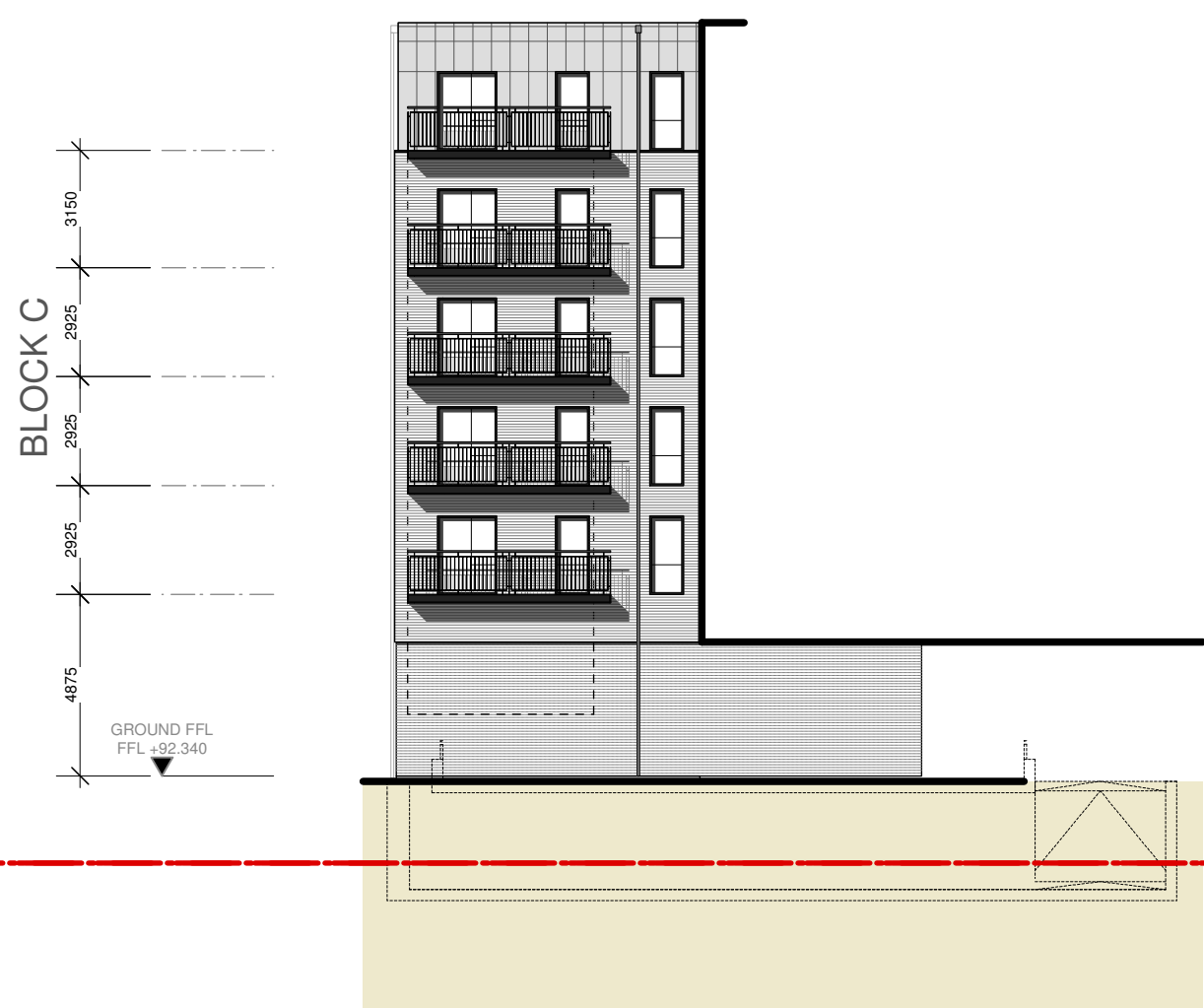
A Issued for Planning 22.12.14



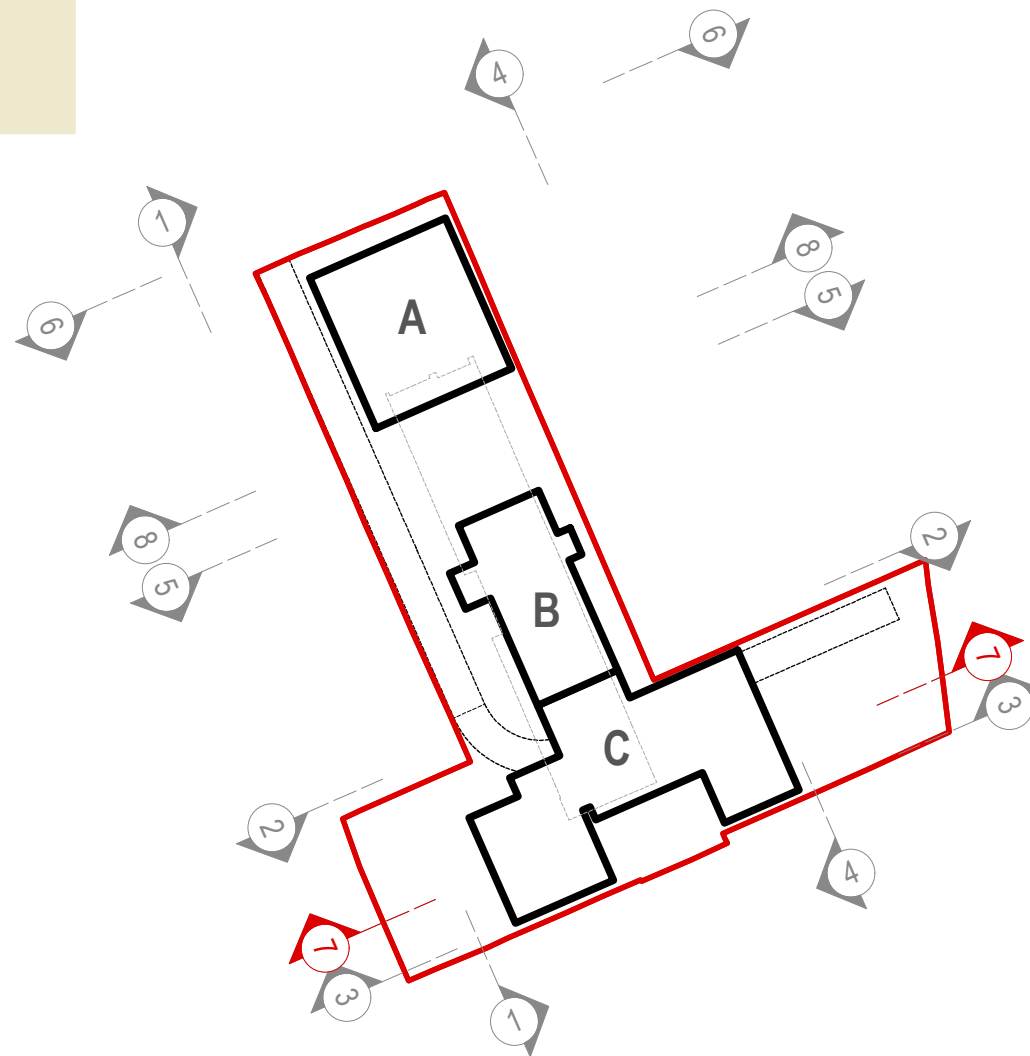
ELEVATION / SECTION 7: North Rear Elevation to Block C



ELEVATION / SECTION 9:
Internal Courtyard West Elevation to Block C



ELEVATION / SECTION 10:
Internal Courtyard East Elevation to Block C



PLANNING

client
Taylor Wimpey
North Thames

project
Affinity Sutton
Elstree Way
Borehamwood

title
Proposed Elevation / Section
7, 9, 10

scale
1:200 @ A1

drawn by
-

date
December 2014

checked by
cm

checked by
jrp

project number
773

drawing number
A / 026

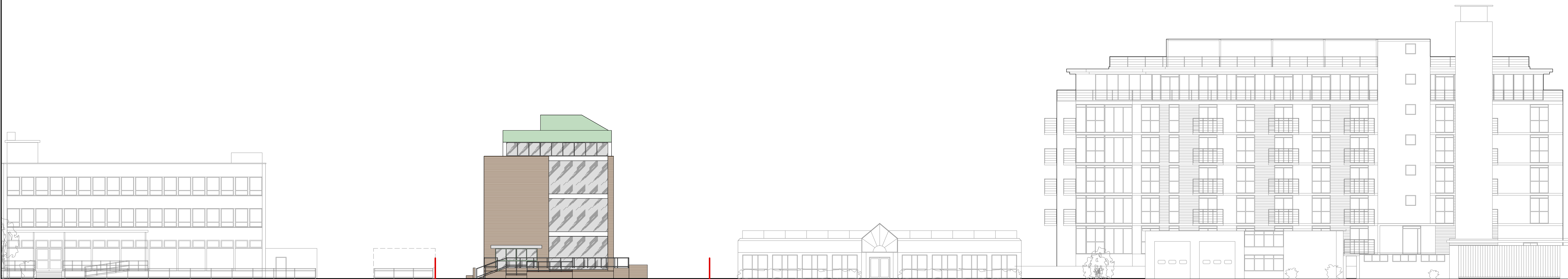
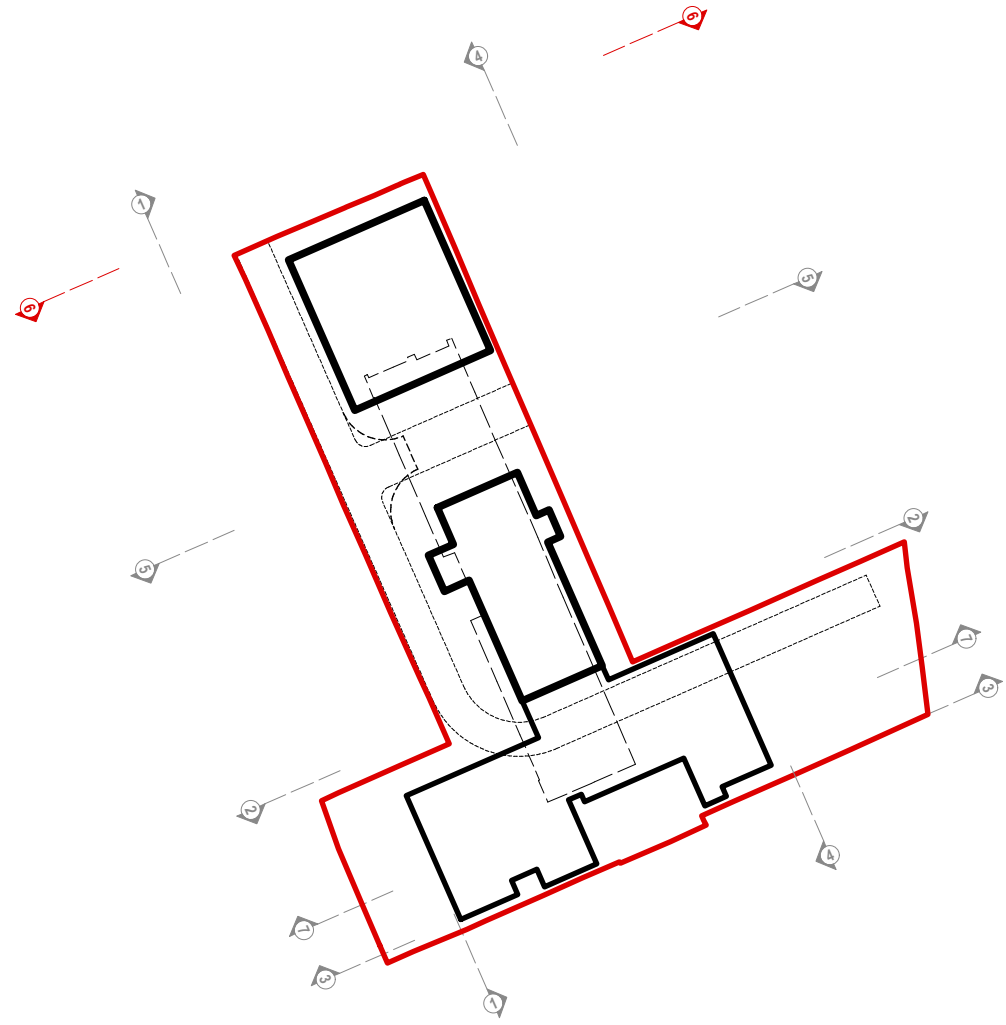
revision
- A

JOHN ROWE-PARR
ARCHITECTS

STUDIO
Partingdale Lodge
Partingdale Lane
London NW7 1NS
Tel: 020 3150506
jrp@johnroweparr.co.uk



ELEVATION 6: Elstree Way Street Elevation - PROPOSED
ELEVATION 6: Elstree Way



ELEVATION 6: Elstree Way Street Elevation - PROPOSED

© John Rowe-Parr Architects.
Copyrights reserved.

notes

all settings must be checked on site
all levels are to be checked on site
all drawings are to be checked on site
all dimensions to be checked on site
drawing must be read in conjunction, with relevant
specification clauses
day not to be used for land transfer

This drawing and its subject matter are the
confidential property of John Rowe-Parr Architects
and shall not be copied, reproduced, used or
disclosed to others without the prior written
authority of John Rowe-Parr Architects.

revision notes

A	Issued for planning	22/12/14
---	---------------------	----------

PLANNING

client
Taylor Wimpey
North Thames

project
Affinity Sutton
Elstree Way
Borehamwood

title
Existing and proposed street
elevation

scale
1:200 @ A1

drawn by
-

date
December 2014

checked by
cm

checked by
jrp

project number
796

drawing number
A / 030

revision
- A

JOHN ROWE-PARR
ARCHITECTS

HEATH LODGE
Partingdale Lane
London NW7 1NS
Tel: 020 3150098
jrp@johnroweparr.co.uk