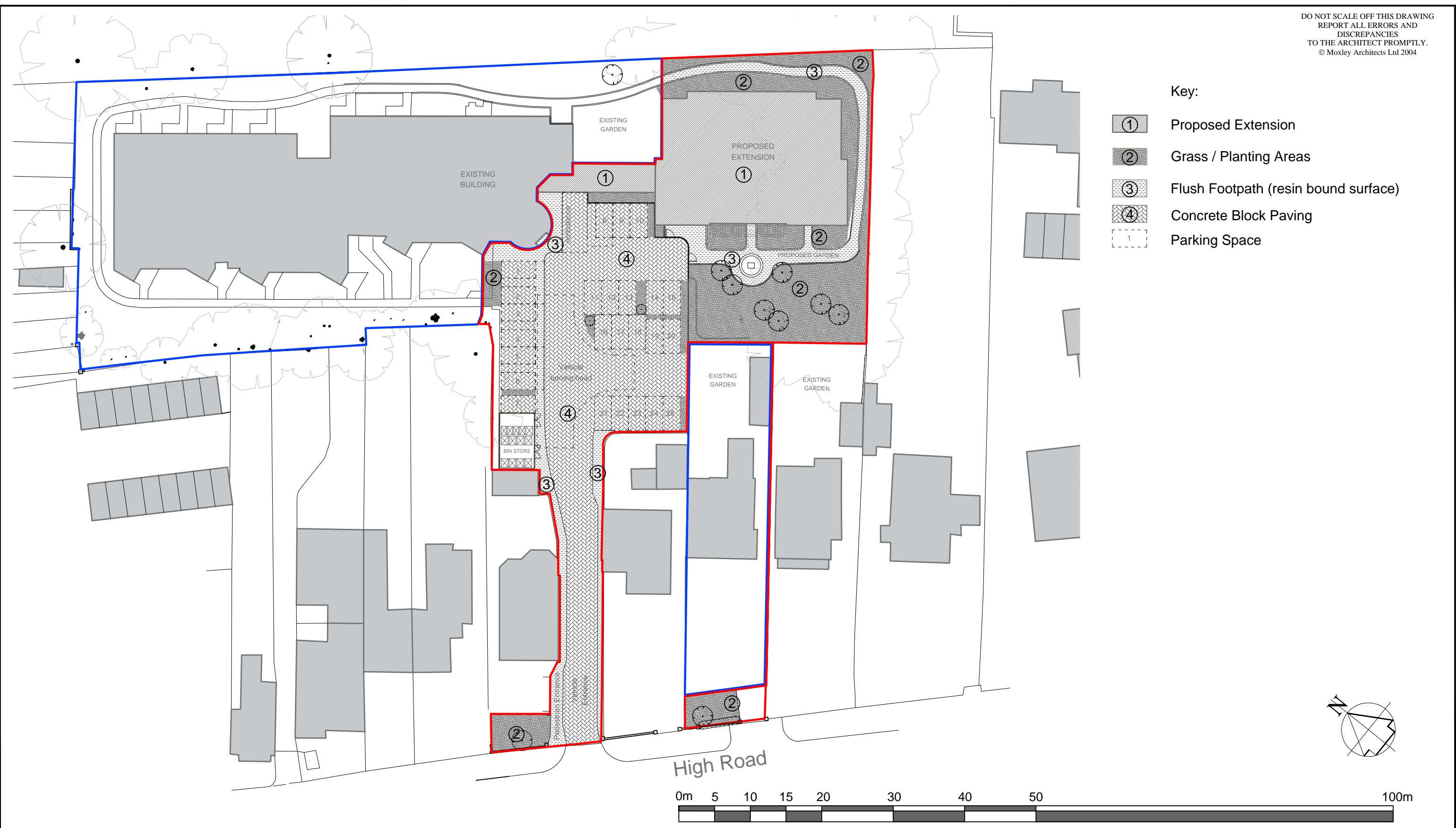


Key:

- ① Proposed Extension
- ② Grass / Planting Areas
- ③ Flush Footpath (resin bound surface)
- ④ Concrete Block Paving
- Parking Space



No.	DATE	BY	COMMENTS
P5	April 16	DF	RED LINE BOUNDARY ADJUSTED

Client: Jewish Blind and Disabled		
Job: Cecil Rosen Court Land at rear of 170-172 High Road Bushey, Hertfordshire		
Drawing Title: Location Plan		
Issue Date: FEB2015	Scale: 1:500@A3	Drawn:

MOXLEY ARCHITECTS LTD
 47 Clapham High St, London SW4 7TL
 Tel: 020-7720-8968 Fax: 020-7627-2533
 info@moxley.co.uk

Drwg No.: **755-1.002-P5**

File Ref.: 755-Autocad- Planning