



**Hertsmere Borough Council**

**COMMUNITY INFRASTRUCTURE LEVY (CIL)**

**CHARGING SCHEDULE**

**17<sup>th</sup> September 2014**

**Document Title**

**Purpose**

CIL Charging Schedule

Adopted CIL Charging Schedule

## The Charging Authority

The Charging Authority is Hertsmere Borough Council

## Date of Approval

This Charging Schedule was approved by the Council on 17th September 2014

## Date of Effect

This Charging Schedule will come into effect on 1<sup>st</sup> December 2014

## CIL Rates

The rate at which CIL is charged shall be:

| <b>Residential Development</b>   |                           |
|--|---------------------------|
| <b>Area</b>  | <b>CIL Rate (per sqm)</b> |
| Area A   | £120                      |
| Area B   | £180                      |
| Elstree Way Corridor   | £0                        |
| <b>Commercial Development</b>  |                           |
| <b>Type</b>  | <b>CIL Rate (per sqm)</b> |
| Hotel (Use Class C1)   | £120                      |
| Specialist accommodation for the elderly and / or disabled including Sheltered and Retirement Housing and Nursing Homes, Residential Care Homes and Extra Care Accommodation | £120                      |
| Retail (Use Class A1)  | £80                       |
| Office (Use Class B1)  | £0                        |
| Industrial (Use Class B2)  | £0                        |

## The Charging Areas

The Charging Areas A, B and 'Elstree Way Corridor' are defined in the "Community Infrastructure Levy Charging Area" Map in Annex 1 of this Schedule.

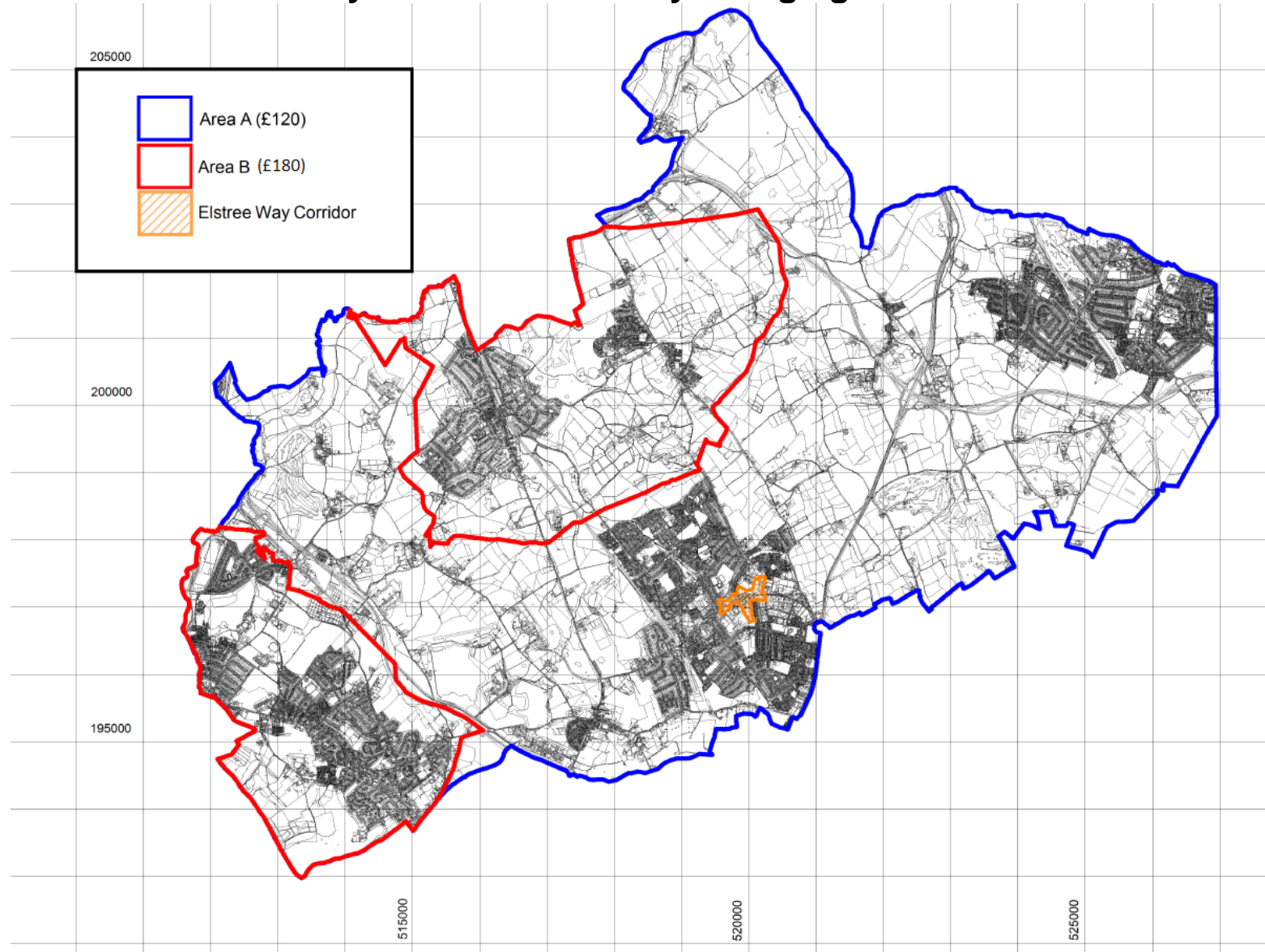
## Calculating the Chargeable Amount

The Council will calculate the amount of CIL payable ("chargeable amount") in respect of a chargeable development in accordance with regulation 40 of the Community Infrastructure Levy Regulations 2010 (amended 2013). The above rates are subject to indexation as defined in Regulation 40 (5).

## Statutory Compliance

This Draft Charging Schedule has been published in accordance with the Community Infrastructure Levy Regulations 2010 (as amended in the Community Infrastructure Levy Regulations 2011, 2012, 2013) and Part 11 of the Planning Act 2008 and in any future amendments.

# Annex 1: Community Infrastructure Levy Charging Areas



This map is based upon Ordnance Survey material with permission of Ordnance Survey on behalf of the Controller of Her Majesty's Stationary Office © Crown copyright. Unauthorised reproduction in fringes Crown copyright and may lead to prosecution or civil proceedings. Licence No: 100017428 2