

Hertsmere Local Development Framework

Development Plan Document

## **Core Strategy**

Statement of representations received following  
publication of the Hertsmere Core Strategy for  
submission to the Secretary of State

pursuant to Regulation 30 (1) (e) of The Town and Country Planning  
(Local Development) (England) (Amendment) Regulations 2008

10<sup>th</sup> February 2012



## **Contents**

### **1. Introduction**

The role of this document  
The need for this document

### **2. Publication of the submission Core Strategy**

### **3. Summary of the main issues raised in the representations**

Housing  
Green Belt  
Gypsies and Travellers  
Employment  
Retail/Tourism/Leisure  
Infrastructure  
Environment

### **4. Statement of Common Ground**

### **5. Statement of Collaboration**

Meetings and discussions  
Production of joint evidence base  
Statement of Community Involvement

**Appendix A** - Statement of Matters and Fact Notice November 2011

**Appendix B** - Copy of newspaper cuttings in December 2011

**Appendix C** - Copy of the response form issued for representations to be made in November 2011

**Appendix D** - List of organisations and persons notified at Regulation 27 submission stage November 2011

**Appendix E** - Summary of representations made at Regulation 27 stage

## 1.0 Introduction

### *The role of this document*

- 1.1 This Statement of Representations contains details of the representations received following publication of the Hertsmere Core Strategy Development Plan Document (DPD) in November 2011 for submission to the Secretary of State. The purpose of this document is to set out:
  - How many representations were made on the Core Strategy DPD in accordance with Regulation 28(2)<sup>1</sup>; and
  - A summary of the main issues raised in those representations.
- 1.2 This document should be read in conjunction with the separate Statement of Consultation, which is being published in accordance with Regulation 30 (1) (d) of the 2008 regulations and which provides details of the extensive consultation carried out prior to publication of the Core Strategy DPD. This includes details of who was consulted, how they were consulted, a summary of the main issues raised and how those issues have been addressed.

### *The need for this document*

- 1.3 The Planning and Compulsory Purchase Act 2004 introduced major changes to the planning system. The Hertsmere Local Plan, adopted in 2003, is being replaced with a suite of documents which will make up a Local Development Framework (LDF). The new legislation introduced new requirements to ensure that effective public and stakeholder consultation was undertaken. Hertsmere Borough Council's Statement of Community Involvement, adopted in September 2006, set out how the Council intends to undertake public consultation and participation in the preparation of the various documents that will comprise its LDF.
- 1.4 Hertsmere Borough Council is required to produce a Statement of Consultation and this Statement of Representations under Regulations 30 (d) and 30 (e) respectively to accompany the submission of the Revised Core Strategy DPD to the Secretary of State. This Statement of Representation and Statement of Consultation should also be read in accordance with the Statements published in March 2009.
- 1.5 It is intended that the Statement of Consultation will assist the Inspector, appointed by the Secretary of State, to carry out the Core Strategy examination in determining whether the DPD complies with the minimum requirements for involvement and government guidance. It is hoped that this document (the Statement of Representations) will enable the Inspector to be aware of the key issues raised by stakeholders and the public at an early stage in the examination process.

---

<sup>1</sup> Regulation 28(2) of the Town and Country Planning (Local Development) (England) (Amendment) Regulations 2008

## **2.0 Publication of the submission Revised Core Strategy**

- 2.1 Prior to the publication of the Core Strategy for submission to the Secretary of State, Hertsmere Borough Council had already undertaken extensive public participation and consultation during the preparation of the Core Strategy. This involved four separate consultation exercises (Issues Scoping, Issues and Options<sup>3</sup>, Preferred Options<sup>4</sup> and Revised Consultation Draft<sup>5</sup>), the details of which are set out in two separate Regulation 30 (e) Statements of Consultation dated March 2009 and January 2012.
- 2.2 The publication of the Revised Core Strategy in November 2011 provided an opportunity for representations to be made prior to submission of the Revised DPD. This did not constitute a conventional period of 'public consultation' but it was emphasised at the time that representations received would be taken into account at the Revised Core Strategy examination, rather than resulting in any further significant changes to the DPD.
- 2.3 The Revised Core Strategy DPD was approved at a meeting of the full Council on 16<sup>th</sup> November 2011. It was formally published on 28<sup>th</sup> November 2011 with representations invited over a six week period closing on 9<sup>th</sup> January 2012.
- 2.4 The document together with a statement of consultation and representations, and a statement of matters and fact notice (Appendix A) were made available for public inspection at the Council's main offices and libraries during their normal office hours, and on the Council's website from 28 November 2011. The same notices were issued in local newspapers the week that the six week period began, depending on their date of publication (Appendix B).
- 2.5 A total of 1,200 notifications of the deposit period were sent via email (where possible) and post. A response form was compiled to aid and direct stakeholders comments towards the purpose of the 6 week period for representations (see Appendix C). The Revised Core Strategy and associated statement of representations were sent to the list of specific consultees included in the Council's SCI. A notification letter and associated statement of representations and the statement of the fact that the documents are available for inspection, were sent to the list of general consultees identified in the SCI. A list of specific, general and all other consultees can be found in Appendix D.
- 2.6 A limited number of minor changes have been proposed (a) in the light of typographical errors and (b) a small number of representations seeking minor changes which can be made without the need for further public

---

<sup>3</sup> Hertsmere Local Development Framework, Issues and Options (February 2006)

<sup>4</sup> Core Strategy Preferred Options (November 2007)

<sup>5</sup> Revised Core Strategy Consultation Draft (December 2010)

consultation and sustainability appraisal. These are set out in a separate schedule of minor changes.

- 2.7 55 different respondents made a total of 188 representations, of which 28 consultees used the response form. One representation was received after the deadline on 10 January 2012, and two separate plan related updates were received after the deadline on 10 and 25 January 2012. A summary of the representations can be found in Appendix E.
- 2.8 Prior to the Local Democracy, Economic Development and Construction Act 2009, there was a requirement for Local Planning Authorities to seek an opinion from the regional planning body on the general conformity of the DPD with the RSS. In the absence of a regional planning body and the 2009 Act, schedule 5 (15) (3) removed the requirement and this has subsequently been confirmed to the Council by the Department for Communities and Local Government. Although an opinion has not been received at this stage, the Council did previously take steps to contact a range of organisations, namely the East of England Development Agency (EEDA) and the East of England Local Government Association (EELGA), Government Office for the East of England (GO-East) and the East of England Regional Assembly (EERA); there was no response from the first two organisations and the latter two were returned in the post. However, the Government Office and EEDA were actively involved earlier in the Core Strategy process.

### **3.0 Summary of the main issues raised in the representations**

3.1 The key issues raised by representations submitted are set out below, including general comments applicable to the whole document and suggestions for policies which are not currently included within the Revised Core Strategy DPD.

#### **3.2 Housing:**

- The evidence base upon which the housing policies are founded is not thought to be sufficiently comprehensive, robust or up-to-date. There are concerns regarding the SHLAA and the assumptions on general conformity with the East of England Plan.
- The housing target would not meet identified need on the basis of population growth, forecasts and the East of England population trajectory.
- The 15 year housing target of 3,550 additional dwellings is considered to be inconsistent with the East of England Plan 20 year housing target of 250 dwellings per year up to 2021 (total 5,000 additional dwellings).
- It is not thought that Affordable Housing contributions should be sought from extra care housing (Use Class C2), where there is little justification for this approach compared to other residential use classes.
- The Elstree Way Corridor in Borehamwood is supported as a mechanism for the delivery of new housing in the Borough.
- It is not considered that Potters Bar would be able to support a significant level of housing, given the capacity of infrastructure.

#### **3.3 Green Belt:**

- There should be a review of the Green Belt boundary, as part of the Core Strategy. The aims of such a review would be to allow for new development to be accommodated outside of existing urban areas.
- It was considered that development should be distributed more evenly across the Borough, including its Green Belt areas, rather than being focused on specific towns.
- The Strategic Gap between Bushey and Watford is not considered to be a valid policy designation according to some land owners within that area. It is thought that the Strategic Gap would play a similar role to the Green Belt.

#### **3.4 Gypsies and Travellers:**

- The methodology underpinning the target for Gypsy and Traveller pitch provision is not clear, and considered to be inconsistent with the

East of England Plan. It was thought that the proposed level was an under provision of the target in the RSS.

- It was thought that some of the criteria set out in Policy CS6 on identifying suitable sites for gypsy and traveller pitches are onerous.

### 3.5 Employment:

- The area of land between the A1 and Rowley Lane would be suitable for accommodating new employment land in the future.
- The proposed safeguarded employment land should also include the London-Elstree Holiday Inn which should be taken out of the Green Belt. It was noted that the Holiday Inn site is established and would comfortably sit within the urban boundary out of the Green Belt.
- The identification of safeguarded employment land in the Green Belt has not been sufficiently justified in the supporting text or the evidence base.

### 3.6 Retail/Tourism/Leisure:

- There should be greater recognition that there may be appropriate locations outside of the existing Employment Areas or urban areas for employment generating development.
- A need for a specific tourism policy in the Core Strategy, regardless of a site's location in the Green Belt.
- The evidence base is not sufficient in planning for the need of leisure and community facilities in the Core Strategy. It is thought that there should be a Community Needs or Social Infrastructure Assessment.
- Policy CS14 may encourage inappropriate recreational development in the Green Belt, by promoting access to open spaces and the countryside.

### 3.7 Infrastructure:

- There is a lack of reference to the recently identified need for additional primary school capacity in Borehamwood, particularly in view of the proposed housing growth for the town.
- There is a concern that sewerage capacity has not been addressed in the evidence base of the Core Strategy.
- The Council should produce an Infrastructure Delivery Plan to form part of the evidence base of the Core Strategy.
- A specific policy to accommodate new cemeteries should be included as a key community facility.

### 3.8 Environment:

- It is not considered that the Open Space study methodology is in conformity with PPG17, particularly in relation to it being a 'robust assessment and audits of local need'.
- No reference has been made to Hertsmere and Hertfordshire Green Infrastructure plans, which were both finalised in 2011. It was thought that green infrastructure and its benefits, together with the plans, should be more explicitly referenced in the supporting text and policies.
- The approach to the historic environment is generally supported, with a selection of suggested minor edits to ensure conformity with the approach of national policy.
- The approach towards the protection of ecological sites is also largely supported, with some amendments to wording in the supporting text and referencing to regional and national documentation.



#### **4. Statement of common ground**

4.1 Following the Regulation 27 consultation, the Council is currently seeking to reach a degree of common ground between many of the consultees, where possible, on the comments raised. After the key issues were identified, the Council engaged in a review process of various sections, paragraphs and policies in light of some of the concerns raised. Representatives were contacted with the intention of integrating their comments and making minor amendments to the document where possible. These organisations include:

- Three Rivers District Council
- Traveller Law reform project and Friends, Families and Travellers
- National Federation of Gypsy Liaison
- David Lander
- CPRE
- McCarthy and Stone
- Willows Farm
- Jupiter Hotels
- Highways Agency
- London Travelwatch
- Sport England
- PGA Design
- Herts Gardens Trust
- Herts and Middlesex Wildlife Trust
- Natural England
- Forestry Commission
- English Heritage
- Hertfordshire County Council

4.2 All of these stakeholders were contacted on whether they agreed with the Council's minor changes. At the time of writing, four Statements of Common Ground were agreed to and signed, with:

- Three Rivers District Council;
- Hertfordshire Gardens Trust;
- Natural England; and

- The Forestry Commission.

- 4.3 It is also considered that some minor modifications can be made to address some of the concerns made by representors, who did not respond, but where common ground was sought. These changes are also set out in the Schedule of Minor Modifications. These agreed changes are all considered to be minor in nature and none require either a further sustainability appraisal or a Regulation 27 consultation.
- 4.4 The Council is intending to agree further Statements of Common Ground within the following three weeks until the end of February. Copies of existing statements are included as part of the submission material, and published on the Council's Website. Any further statements will be sent to the Inspector, Programme Officer and uploaded to the website.

## **5. Statement of Collaboration**

- 5.1 Throughout the production of the Core Strategy, and wherever possible, the Council has worked collaboratively with the County Council, neighbouring authorities (both in Hertfordshire and London), and key stakeholders. The Council has well established arrangements for joint working, consultation and discussions. These are set out below.

### *Meetings and discussions*

- 5.2 The Council holds regular meetings and discussions with adjoining authorities. For example through the production of the Core Strategy, the Council has met with Watford, St Albans, Welwyn Hatfield, and Hertfordshire County Council, and had discussions with Three Rivers, Dacorum and London Borough of Enfield. Within these discussions, the Council has discussed cross boundary issues, and approaches to particular problems, such as infrastructure capacity. In addition, the Council has met with key delivery agencies such as the Highways Agency and Environment Agency to agree on issues relating to the delivery and implementation of the Core Strategy. The Council is also currently working with Thames Water and Sports England to this effect.
- 5.3 Hertsmeire sits on a number of Countywide and Sub Regional groups such as the Hertfordshire Planning Group (HPG), HPG Development Plans committee (which Hertsmeire currently chairs) and HPG Landscape. These groups consider key and emerging spatial planning other work, seeking joint working and agreement within the County where possible. The implications of the Localism Act, Infrastructure requirements, Gypsy and Traveller Accommodation, CIL, SUDs, County Monitoring, have all been considered, with joint working progressed on issues such as Strategic and Green Infrastructure and CIL viability.

### *Production of joint evidence base*

- 5.4 The Council has worked with a number of neighbouring authorities in the production of evidence which underpins the Core Strategy. Joint working, particularly with authorities in the South Hertfordshire on the production of the evidence has allowed the sharing of ideas, best practice and where possible cooperation on ideas and policies. The shared evidence base includes:
- The London Commuter Belt Strategic Housing Market Assessment which was produced in cooperation with Hertfordshire County Council, Dacorum Borough Council, Hertsmeire Borough Council, St Albans District Council, Three Rivers District Council, Watford Borough Council and Welwyn Hatfield Borough Council. The Assessment considers housing need within the South West Hertfordshire Housing Market.

- The Gypsy Accommodation Needs Study and the Accommodation needs of Gypsies and Travellers in South and West Hertfordshire. This joint working project was initially commissioned by Hertsmere, with Hertfordshire County Council, Dacorum Borough Council, St Albans City and District Council, Three Rivers District Council and Watford Borough Council. The study considers need and possible location sites in South West Hertfordshire.
- The Central Hertfordshire Employment Land Review was a joint project between Hertsmere, St Albans, and Welwyn Hatfield, who commissioned consultants to consider employment need in the sub region. This study was followed by the Hertfordshire London Arc Jobs Growth and Employment Land, this project included Broxbourne, Dacorum, Hertsmere, St. Albans, Three Rivers, Watford and Welwyn Hatfield Councils, and considered employment need within South West Hertfordshire
- Hertsmere jointly commissioned consultants to produce a Development Economics Study, with St Albans and Welwyn Hatfield. This study considered the viability of housing development in each of the Boroughs.
- Broxbourne Borough Council; Dacorum Borough Council; East Herts District Council; Hertsmere Borough Council; North Herts District Council; St Albans District Council; Three Rivers Borough Council; Watford Borough Council; Welwyn Hatfield Borough Council; and Hertfordshire County Council have collaborated on the production of a Hertfordshire Renewable and Low Carbon Energy Technical Study for the County.
- The Hertfordshire Local Authorities comprising the ten District Councils and the County Council commissioned Atkins, Roger Tym and Partners and URS to carry out an assessment of Hertfordshire's future infrastructure requirements and the identification of funding mechanisms necessary to secure its provision, in order to support the future growth in homes and jobs in Hertfordshire in the period to 2021, with consideration also given to the period to 2031.
- The Council has also commissioned consultants on behalf of nine out of the ten Hertfordshire authorities to consider CIL viability and charging schedules.

*Statement of Community Involvement*

- 5.5 The Hertsmere Borough Council Statement of Community Involvement (SCI) September 2006 sets out the procedures that the Council will take when producing planning documents.
- 5.6 Within the SCI, the Council have set out that it will consult, specifically with key stakeholders, infrastructure delivery agents, government departments, all local authorities in Hertfordshire and the County Council, adjoining London Boroughs, and parish councils. As demonstrated in this statement of representation and within the statement of consultation, the Council have consulted with these organisations in the production of the Core Strategy, many of whom have helped to shape the submission Core Strategy.

## Appendix A

### Statement of Matters and Fact Notice November 2011



#### HERTSMERE BOROUGH COUNCIL LOCAL DEVELOPMENT FRAMEWORK CORE STRATEGY DEVELOPMENT PLAN DOCUMENT (DPD)

##### Statement of the Representations Procedure

This is a Statement of the Representations Procedure in accordance with Regulation 27 of the Town and Country Planning (Local Development) (England) (Amendment) Regulations 2008. The title of the document which the Council proposes to submit to the Secretary of State is the Hertsmere Revised Core Strategy (for Submission to the Secretary of State) November 2011.

The Core Strategy sets out the key elements of the planning framework for the area and comprises a long-term spatial vision and strategic objectives, a spatial strategy, core policies and a monitoring and implementation framework with clear objectives for achieving its delivery.

The Core Strategy has been published for a six-week deposit period and representations can be made from Monday 28<sup>th</sup> November 2011 until Monday 9<sup>th</sup> January 2012.

The Core Strategy is also adopted for interim development control purposes for use in the determination of all valid planning applications registered on or after 28<sup>th</sup> November 2011.

Representations can be made in writing to the Planning Policy Team, Hertsmere Borough Council, Civic Offices, Elstree Way, Borehamwood, Herts, WD6 1WA or [core.strategy@hertsmere.gov.uk](mailto:core.strategy@hertsmere.gov.uk)

Representations may be accompanied by a request to be notified of any of the following: (a) that the Core Strategy has been submitted to the Secretary of State for independent examination, (b) that the person appointed to carry out the independent examination has published their recommendations and/or (c) that the Core Strategy has been formally adopted by the Council.

##### Statement of fact

The Core Strategy is available for inspection on the Council's website (<http://www.hertsmere.gov.uk/planningconsultations>) and also at The Civic Offices, the Council's area offices at Potters Bar and Bushey, and at Aldenham Parish Council offices and local libraries, as follows:

Address	Opening times	Address	Opening times
Civic Offices, Elstree Way Borehamwood WD6 1WA	Monday - Thursday: 9.30am - 5.15pm Friday 9.30am - 5.00pm	Aldenham Parish Council Radlett Centre 1 Aldenham Avenue Radlett WD7 8HL	Monday - Friday: 9.00am - 4.00pm
The Bushey Centre High Street Bushey WD23 1TT	Monday - Friday: 9.30am - 2.00pm	Wylyott's Centre Wylyott's Place Dankes Lane Potters Bar EN6 2HN	Monday - Friday: 9.30am - 2.00pm
Borehamwood Library Elstree Way Borehamwood WD6 1JX	Monday and Wednesday: 09.00 - 19.00 Tuesday: 14.00 - 19.00 Thursday: 11.00 - 19.00 Saturday: 09.00 - 16.00 Friday and Sunday: Closed	Radlett Library 1 Aldenham Avenue Radlett WD7 8HL	Monday & Thursday: 14.00 - 19.00 Tuesday & Friday: 09.00 - 19.00 Saturday: 09.00 - 16.00 Wednesday and Sunday: Closed
Bushey Library Sparrows Home Bushey WD23 1FA	Monday and Wednesday: 14.00 - 19.00 Tuesday and Friday: 09.00 - 19.00 Thursday and Sunday: Closed Saturday: 09.00 - 16.00	Oakmere Library High Street Potters Bar EN6 5BZ	Monday and Wednesday: 09.00 - 19.00 Tuesday and Friday: 14.00 - 19.00 Thursday and Sunday: Closed Saturday: 09.00 - 16.00

**Appendix B**  
**Copy of newspaper cuttings in December 2011**

## Public Notices

## HERTSMERE BOROUGH COUNCIL

44

Herts Advertiser, Thursday, November 24, 2011

## PUBLIC NOTICE

HERTSMERE BOROUGH COUNCIL  
PLANNING AND COMPULSORY  
PURCHASE ACT (2004) (AS AMENDED)REGULATION 27 TOWN AND COUNTRY  
PLANNING (LOCAL DEVELOPMENT)  
(ENGLAND) (AMENDMENT) REGULATIONS 2008

The Council have published a Revised Core Strategy for deposit prior to Submission to the Secretary of State, and invites representations on the document from 28th November 2011 to 9th January 2012. The Core Strategy sets out a vision and high level planning policies for the Borough for the next 15 years.

## REVISED AFFORDABLE HOUSING SPD

REGULATION 17 TOWN AND COUNTRY  
PLANNING (LOCAL DEVELOPMENT)  
(ENGLAND) REGULATIONS 2004  
(AS AMENDED)

The Council have published a revised affordable housing supplementary planning document for consultation, and invites comments on the document from 28th November to 9th January 2012. The SPD provides guidance for the whole borough on the Council's Affordable housing policies.

All representations received on both documents will be public information and should be made in writing by 5pm on Monday 9th January 2012. To [core.strategy@hertsmere.gov.uk](mailto:core.strategy@hertsmere.gov.uk), comment by post to Hertsmere Borough Council, Civic Offices, Elstree Way, Borehamwood, Herts WD6 1WA or by fax on 0208 207 7444

The documents can be viewed at:  
[www.hertsmere.gov.uk/planningconsultations](http://www.hertsmere.gov.uk/planningconsultations)

It is also available to view at the Civic Offices in Borehamwood, Local Libraries, Area Offices and offices of Aldenham Parish Council, Radlett, as set out below:

Civic Offices, Elstree Way, Borehamwood, WD6 1WA  
Monday to Thursday 8.30am to 5.15pm,  
Friday 8.30am to 5pm

Or you can visit our area offices below anytime between 9.30am and 2pm on Tuesdays, Wednesdays and Thursdays

Council Offices, The Bushey Centre, High Street, Bushey, WD23 1TT

Council Offices, Wyllyotts Centre, Wyllyotts Place, Darnes Lane, Potters Bar, EN6 2HN

Aldenham Parish Council, Radlett Centre,  
1 Aldenham Avenue, Radlett, WD7 8HL  
Monday - Friday: 09.00-16.00

Borehamwood Library, Elstree Way, Borehamwood, WD6 1JX  
Monday & Wednesday: 09.00 - 19.00  
Tuesday: 14.00 - 19.00  
Thursday: 11.00 - 19.00  
Saturday: 09.00 - 16.00  
Friday and Sunday: Closed

Bushey Library, Sparrows Herne, Bushey, WD23 1FA  
Monday & Wednesday: 14.00 - 18.00  
Tuesday & Friday: 09.00 - 18.00  
Thursday & Sunday: Closed  
Saturday: 09.00 - 16.00

Oakmere Library, High Street, Potters Bar, EN6 5BZ  
Monday & Wednesday: 09.00 - 18.00  
Tuesday & Friday: 14.00 - 18.00  
Thursday & Sunday: Closed  
Saturday: 09.00 - 16.00

Radlett Library, 1 Aldenham Avenue, Radlett, Hertfordshire, WD7 8HL  
Monday & Thursday: 14.00 - 18.00  
Tuesday & Friday: 09.00 - 18.00  
Saturday: 09.00 - 16.00

The Herts  
(Aldenham  
Road), Rad.  
Zone) (Parl

The Herts  
(Aldenham Av.  
Radlett (C  
(Restriction

NOTICE is hereby  
Council, (pursu  
Hertfordshire Cou  
Orders under the R

The general effect  
new controlled par  
waiting restrictions  
parts of Radlett as  
Notice.

Full details of the p  
orders, the plans ar  
may be inspected  
Central Reception,  
Offices, Elstree W  
[www.hertsmere.gov](http://www.hertsmere.gov.uk)  
2011

General enquiries r  
referred to Andy C  
Technician, Civic (0  
2277); email [parki](mailto:parki)

Any person wishin  
order, or of any pr  
grounds conferred b  
1984, or on the gro  
Act or any Instrum  
complied with in re  
weeks from the dat  
Court for this purpo

SC

Residents & visit  
Friday 2.00pm to  
roads listed belo  
accompanying pla  
Aldenham Avenue,  
Road, Radlett

SC

No waiting at any  
listed below set ou  
plans.

Lengths of Letchm

SC

No waiting - Mon  
- in those sections  
the order and acc  
Lengths of Aldenham  
Road, Radlett

Donald Graham  
Chief Executive  
18 November 2011

## Hertfordshire

TEMPORARY CLOSURE  
ALDENHAM, LETCHWORTH

NOTICE is given that the  
of the Road Traffic Reg  
roads, except for acce  
these lengths of roads

1. that length of Road westwards to its junction with the A10
2. that length of Primrose Lane north eastwards to the junction with the A10
3. that length of Great North Road north westwards to the junction with the A10
4. that length of Church Lane northwards and westwards approximately 477 metres
5. that length of Oakmere Lane

HERTSMERE BOROUGH COUNCIL  
PLANNING AND COMPULSORY  
PURCHASE ACT (2004) (AS AMENDED)REGULATION 27 TOWN AND COUNTRY  
PLANNING (LOCAL DEVELOPMENT)  
(ENGLAND) (AMENDMENT) REGULATIONS 2008

The Council have published a Revised Core Strategy for deposit prior to Submission to the Secretary of State, and invites representations on the document from 28th November 2011 to 9th January 2012. The Core Strategy sets out a vision and high level planning policies for the Borough for the next 15 years.

## REVISED AFFORDABLE HOUSING SPD

REGULATION 17 TOWN AND COUNTRY  
PLANNING (LOCAL DEVELOPMENT)  
(ENGLAND) REGULATIONS 2004  
(AS AMENDED)

The Council have published a revised affordable housing supplementary planning document for consultation, and invites comments on the document from 28th November to 9th January 2012. The SPD provides guidance for the whole borough on the Council's Affordable housing policies.

All representations received on both documents will be public information and should be made in writing by 5pm on Monday 9th January 2012. To [core.strategy@hertsmere.gov.uk](mailto:core.strategy@hertsmere.gov.uk), comment by post to Hertsmere Borough Council, Civic Offices, Elstree Way, Borehamwood, Herts WD6 1WA or by fax on 0208 207 7444

The documents can be viewed at:  
[www.hertsmere.gov.uk/planningconsultations](http://www.hertsmere.gov.uk/planningconsultations)

It is also available to view at the Civic Offices in Borehamwood, Local Libraries, Area Offices and offices of Aldenham Parish Council, Radlett, as set out below:

Civic Offices, Elstree Way, Borehamwood, WD6 1WA  
Monday to Thursday 8.30am to 5.15pm,  
Friday 8.30am to 5pm

Or you can visit our area offices below anytime between 9.30am and 2pm on Tuesdays, Wednesdays and Thursdays

Council Offices, The Bushey Centre, High Street, Bushey, WD23 1TT

Council Offices, Wyllyotts Centre, Wyllyotts Place, Darnes Lane, Potters Bar, EN6 2HN

Aldenham Parish Council, Radlett Centre,  
1 Aldenham Avenue, Radlett, WD7 8HL  
Monday - Friday: 09.00-16.00

Borehamwood Library, Elstree Way, Borehamwood, WD6 1JX  
Monday & Wednesday: 09.00 - 19.00  
Tuesday: 14.00 - 19.00  
Thursday: 11.00 - 19.00  
Saturday: 09.00 - 16.00  
Friday and Sunday: Closed

Bushey Library, Sparrows Herne, Bushey, WD23 1FA  
Monday & Wednesday: 14.00 - 18.00  
Tuesday & Friday: 09.00 - 18.00  
Thursday & Sunday: Closed  
Saturday: 09.00 - 16.00

Oakmere Library, High Street, Potters Bar, EN6 5BZ  
Monday & Wednesday: 09.00 - 18.00  
Tuesday & Friday: 14.00 - 18.00  
Thursday & Sunday: Closed  
Saturday: 09.00 - 16.00

Radlett Library, 1 Aldenham Avenue, Radlett, Hertfordshire, WD7 8HL  
Monday & Thursday: 14.00 - 18.00  
Tuesday & Friday: 09.00 - 18.00  
Saturday: 09.00 - 16.00  
Wednesday & Sunday: Closed

Donald Graham  
Chief Executive  
Hertsmere Borough Council  
24 November 2011

SA  
DELI

We need 1  
start imm  
our He  
Nutrition f  
Bar  
No exp  
nece  
£1800 per  
C  
020 844  
07961  
r.black22@b

View  
only



## Public Notices

's Licence

**HERTSMERE BOROUGH COUNCIL  
PLANNING AND COMPULSORY  
PURCHASE ACT (2004) (AS AMENDED)****REGULATION 27 TOWN AND COUNTRY  
PLANNING (LOCAL DEVELOPMENT)  
(ENGLAND) (AMENDMENT) REGULATIONS 2008**

The Council have published a Revised Core Strategy for deposit prior to Submission to the Secretary of State, and invites representations on the document from 28th November 2011 to 9th January 2012. The Core Strategy sets out a vision and high level planning policies for the Borough for the next 15 years.

**REVISED AFFORDABLE HOUSING SPD  
REGULATION 17 TOWN AND COUNTRY  
PLANNING (LOCAL DEVELOPMENT)  
(ENGLAND) REGULATIONS 2004  
(AS AMENDED)**

The Council have published a revised affordable housing supplementary planning document for consultation, and invites comments on the document from 28th November to 9th January 2012. The SPD provides guidance for the whole borough on the Council's Affordable housing policies.

All representations received on both documents will be public information and should be made in writing by 5pm on Monday 9th January 2012. To [core.strategy@hertsmere.gov.uk](mailto:core.strategy@hertsmere.gov.uk), comment by post to Hertsmeire Borough Council, Civic Offices, Elstree Way, Borehamwood, Herts WD6 1WA or by fax on 0208 207 7444

The documents can be viewed at:  
[www.hertsmere.gov.uk/planningconsultations](http://www.hertsmere.gov.uk/planningconsultations)

It is also available to view at the Civic Offices in Borehamwood, Local Libraries, Area Offices and offices of Aldenham Parish Council, Radlett, as set out below:

**Civic Offices, Elstree Way, Borehamwood, WD6 1WA**  
Monday to Thursday 8.30am to 5.15pm,  
Friday 8.30am to 5pm

Or you can visit our area offices below anytime between 9.30am and 2pm on Tuesdays, Wednesdays and Thursdays

**Council Offices, The Bushey Centre, High Street, Bushey, WD23 1TT**

**Council Offices, Wylyotts Centre, Wylyotts Place, Darnes Lane, Potters Bar, EN6 2HN**

**Aldenham Parish Council, Radlett Centre, 1 Aldenham Avenue, Radlett, WD7 8HL**  
Monday - Friday: 09.00-16.00

**Borehamwood Library, Elstree Way, Borehamwood, WD6 1JX**  
Monday & Wednesday: 09.00 - 19.00  
Tuesday: 14.00 - 19.00  
Thursday: 11.00 - 19.00  
Saturday: 09.00 - 16.00  
Friday and Sunday: Closed

**Bushey Library, Sparrows Herne, Bushey, WD23 1FA**  
Monday & Wednesday: 14.00 - 18.00  
Tuesday & Friday: 09.00 - 18.00  
Thursday & Sunday: Closed  
Saturday: 09.00 - 16.00

**Oakmere Library, High Street, Potters Bar, EN6 5BZ**  
Monday & Wednesday: 09.00 - 18.00  
Tuesday & Friday: 14.00 - 18.00  
Thursday & Sunday: Closed  
Saturday: 09.00 - 16.00

**Radlett Library, 1 Aldenham Avenue, Radlett, Hertfordshire, WD7 8HL**  
Monday & Thursday: 14.00 - 18.00  
Tuesday & Friday: 09.00 - 18.00  
Saturday: 09.00 - 16.00  
Wednesday & Sunday: Closed

**Donald Graham**  
Chief Executive  
Hertsmeire Borough Council



## Public notices

**HERTSMERE BOROUGH COUNCIL  
PLANNING AND COMPULSORY  
PURCHASE ACT (2004) (AS AMENDED)****REGULATION 27 TOWN AND COUNTRY  
PLANNING (LOCAL DEVELOPMENT)  
(ENGLAND) (AMENDMENT) REGULATIONS 2008**

The Council have published a Revised Core Strategy for deposit prior to Submission to the Secretary of State, and invites representations on the document from 28th November 2011 to 9th January 2012. The Core Strategy sets out a vision and high level planning policies for the Borough for the next 15 years.

**REVISED AFFORDABLE HOUSING SPD****REGULATION 17 TOWN AND COUNTRY  
PLANNING (LOCAL DEVELOPMENT)  
(ENGLAND) REGULATIONS 2004  
(AS AMENDED)**

The Council have published a revised affordable housing supplementary planning document for consultation, and invites comments on the document from 28th November to 9th January 2012. The SPD provides guidance for the whole borough on the Council's Affordable housing policies.

All representations received on both documents will be public information and should be made in writing by 5pm on Monday 9th January 2012. To [core.strategy@hertsmere.gov.uk](mailto:core.strategy@hertsmere.gov.uk), comment by post to Hertsmeire Borough Council, Civic Offices, Elstree Way, Borehamwood, Herts WD6 1WA or by fax on 0208 207 7444

The documents can be viewed at:  
[www.hertsmere.gov.uk/planningconsultations](http://www.hertsmere.gov.uk/planningconsultations)

It is also available to view at the Civic Offices in Borehamwood, Local Libraries, Area Offices and offices of Aldenham Parish Council, Radlett, as set out below:

**Civic Offices, Elstree Way, Borehamwood, WD6 1WA**  
Monday to Thursday 8.30am to 5.15pm,  
Friday 8.30am to 5pm

Or you can visit our area offices below anytime between 9.30am and 2pm on Tuesdays, Wednesdays and Thursdays

**Council Offices, The Bushey Centre, High Street, Bushey, WD23 1TT**

**Council Offices, Wylyotts Centre, Wylyotts Place, Darnes Lane, Potters Bar, EN6 2HN**

**Aldenham Parish Council, Radlett Centre, 1 Aldenham Avenue, Radlett, WD7 8HL**  
Monday - Friday: 09.00-16.00

**Borehamwood Library, Elstree Way, Borehamwood, WD6 1JX**  
Monday & Wednesday: 09.00 - 19.00  
Tuesday: 14.00 - 19.00  
Thursday: 11.00 - 19.00  
Saturday: 09.00 - 16.00  
Friday and Sunday: Closed

**Bushey Library, Sparrows Herne, Bushey, WD23 1FA**  
Monday & Wednesday: 14.00 - 18.00  
Tuesday & Friday: 09.00 - 18.00  
Thursday & Sunday: Closed  
Saturday: 09.00 - 16.00

**Oakmere Library, High Street, Potters Bar, EN6 5BZ**  
Monday & Wednesday: 09.00 - 18.00  
Tuesday & Friday: 14.00 - 18.00  
Thursday & Sunday: Closed  
Saturday: 09.00 - 16.00

**Radlett Library, 1 Aldenham Avenue, Radlett, Hertfordshire, WD7 8HL**  
Monday & Thursday: 14.00 - 18.00  
Tuesday & Friday: 09.00 - 18.00  
Saturday: 09.00 - 16.00  
Wednesday & Sunday: Closed

**Donald Graham**  
Chief Executive  
Hertsmeire Borough Council  
24 November 2011

M  
pa  
on

W

ke

NOTICE is g  
of the Road  
Kings Lang  
114-metres.  
The purpos  
It is anticip  
(Mondays t  
and 30 Nov  
traffic whils  
if you have  
please cont  
tel. 0300 12

NOTICE is g  
of the Road  
Lane, North  
Oxhey Drive  
The purpos  
works to tal  
It is anticip  
(Mondays t  
31 March 2  
if you have  
Joseph tel.C

NOTICE is g  
of the Road  
Avenue, Bus  
approximat  
The purpos  
It is anticip  
period 28 N  
route will be  
if you have  
contact Neil  
at Hertford

TEMPORAR  
NOTICE is g  
the Road Tr  
Bushey from  
Summerho  
ADDITIONAL  
of road whil  
The purpos  
It is anticip  
be in place  
2012, when  
road clousr  
if you have  
or the temp  
Hertfordshir

TEMPOR

NOTICE is g  
of the Road  
A4145 Moo  
clockwise it  
ADDITIONAL  
of road whil



## Planning

Search this site

Search

[Advanced Search](#) | [Search Tips](#)

You are here: [Home](#) | [Planning](#) | [News](#) | [Key document published to help shape Hertsmere](#)

Choose another section

### In This Section

[Key document published to help shape Hertsmere](#)

[Keeping Shenley special](#)

[Check before you invest](#)

### Key document published to help shape Hertsmere

21-Dec-2011 16:14:50

The council has published its 'Core Strategy' which sets out the overall vision for the borough for the next 15 years with policies for a number of key areas including housing, the environment, employment, transport and retail.

The Core Strategy is a complex document but through thorough assessment and consultation we have created a planning framework for:

- an attractive townscape and the protection of the rural and historic environment
- meeting a range of local housing needs including the provision of affordable housing
- a safer environment
- providing health, education, leisure and other community facilities
- improving economic development, training and employment opportunities

Once the plan is adopted, it will be the main reference document for assessing planning applications.

Mark Silverman, Policy and Transport Manager at Hertsmere Borough Council, said: "All councils have to develop a Core Strategy to help guide town planning and development in the local area.

"We want local people to be aware of it as it will be the main point of reference for officers and councillors when assessing planning applications up to 2027."

Residents, developers, town and parish councils, residents' associations and other local and national interest groups are invited to look at the document prior to it being submitted to the Government early next year. At this stage of the process, feedback on the document can only be accepted via a formal response form which asks whether the document is legally 'sound' i.e. whether the Core Strategy is in accordance with national policy and whether the options for development are justified. Any response forms received will be passed to a government inspector who will consider the document and response forms on behalf of the Secretary of State.

A draft of the strategy went out for consultation in February and comments submitted then have been incorporated into the latest version of the plan, along with other updates.

The revised Core Strategy, supporting documents and the online response form are [online](#) or you can see hard copies at the following places:

**Borehamwood**  
Civic Offices, Elstree Way  
Library, Elstree Way

**Bushey**  
Area Office, The Bushey Centre, High Street  
Library, Sparrows Herne

**Potters Bar**  
Area Office, Wylyotts Centre, Darkes Lane  
Oakmere Library, High Street

**Radlett**  
Aldenham Parish Council, The Radlett Centre, Aldenham Avenue  
Library, Aldenham Avenue

Response forms must be submitted by 9 January.

[Advice, Benefits & Tax](#)  
[Education & Learning](#)  
[Housing](#)  
[Planning](#)

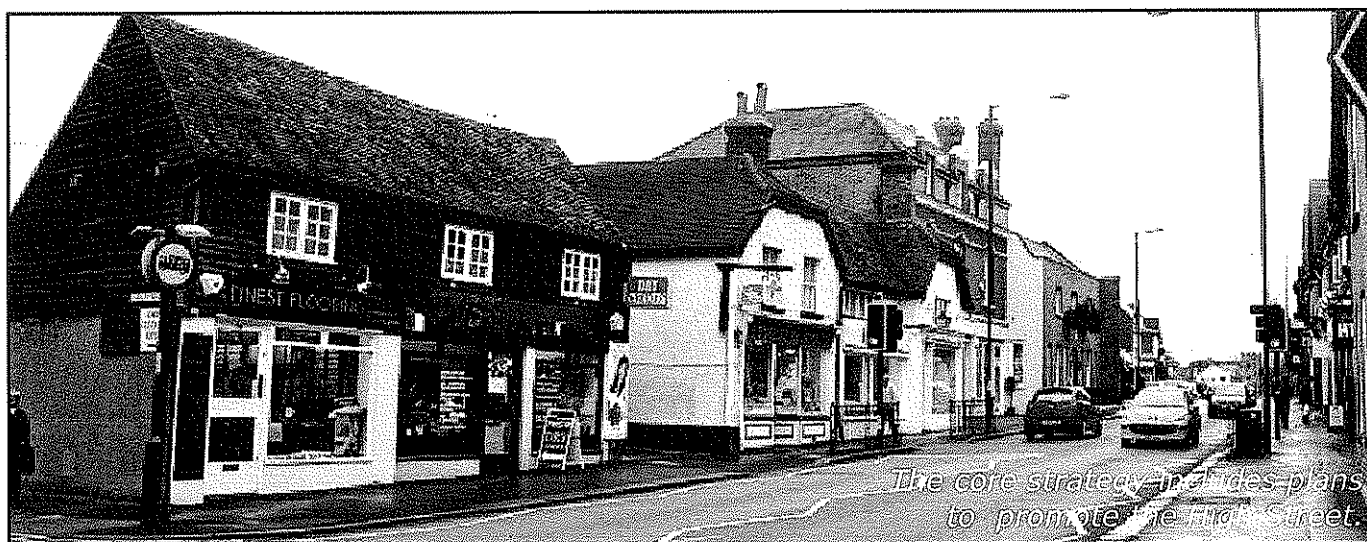
[Business](#)  
[Environment](#)  
[Jobs & Careers](#)  
[Transport & Streets](#)

[Community & Living](#)  
[Forms](#)  
[Leisure & Culture](#)

[Council & Democracy](#)  
[Health & Social Care](#)  
[Payments](#)

2012 Hertsmere Borough Council

[Disclaimer](#) | [Privacy Statement](#) | [Freedom of Information](#) | [Copyright](#) | [DirectGov](#) | [Site Statistics](#)



## Council gets to the core of problem areas

Protecting the viability and vitality of shopping in the Bushey High Street and addressing parking problems in the village are two of the issues Hertsmere Borough Council hopes it has tackled in its new core strategy.

The document, which sets out the overall vision for the whole borough for the next 15 years, outlines policies in a number of key areas including housing, the environment, employment, transport and the retail sector.

Leader of the council, Morris Bright, said: "With respect to Bushey, the core strategy seeks to protect the viability and vitality of local shopping, including measures to promote Bushey High Street, address parking problems specific to Bushey village and Bushey Heath and tackle traffic issues on roads leading to Hartspring roundabout and to Bushey Arches.

"The document also strives to provide more play areas and facilities for young people and protect and promote local artistic heritage."

A draft strategy went out to consultation in February last year and comments submitted have been incorporated into the latest version of the plan, along with other updates. The final

document will be submitted to the Secretary of State for Local Government at the end of this month, before a period of "public examination", which gives the Planning Inspectorate a chance to decide whether the document is legally sound.

The strategy aims to manage housing availability and affordability, including balancing the need for new housing without developing the Green Belt, with up to approximately 890 new homes in the next 15 years. Some 35 per cent of those will be "affordable housing".

It also seeks to absorb the affects of that housing growth on local services, maintain and improve public transport, provide more playgrounds, protect the high street, tackle traffic congestion on Aldenham Road, Chalk Hill and other roads leading to Hartspring roundabout and Bushey Arches, protect employment and industry in the town and promote local artistic heritage.

Once the plan is adopted, it will be the main reference document for assessing planning applications.

by Dan Hatch

### Mobile Beauty Therapist - Let the salon come to you...

Book 2 packages to receive an extra 10% off!

Package One	Package Two	Package Three	Package Four
1/2 Leg & Bikini plus Under Arm or Eyebrow Shape	Manicure & Pedicure	Facial & Eyebrow Shape	Full Body Swedish Massage (Ladies Only)
£30	£30	£30	£30

Call Trudy on: 07729 879 963

Based in Bushey

Archive

Borehamwood Times » Archive »

ARCHIVE - THURSDAY, 22 DECEMBER 2011

FIND BY DATE

1	Dec	2011	2			
Su	Mo	Tu	We	Th	Fr	Sa
				1	2	3
4	5	6	7	8	9	10
11	12	13	14	15	16	17
18	19	20	21	22	23	24
25	26	27	28	29	30	31

OTHER WAYS TO SEARCH

- » Advanced search
- » Browse by topic
- » Site map

SEARCH

ALSO LOOK FOR

- » Jobs
- » Homes
- » Cars
- » Buy & Sell
- » Events
- » Buy photos
- » Advertise

Never miss anything again. Sign up for our RSS news feeds and newsletters.

Your chance to shape Hertsmere Council policy for next 15 years



By Chris Hewett

Housing, employment, transport and the environment in Hertsmere are among policies up for review by the borough council.

Residents are being encouraged to give their views on the authority's core strategy document, which will shape the way the council makes decisions in certain areas for the next 15 years.

Policy and transport manager Mark Silverman said: "We want local people to be aware of it as it will be the main point of reference for officers and councillors when assessing planning applications up to 2027."

Response forms must be submitted by January 9. To comment on the paper, download a response form at [www.hertsmere.gov.uk/planningconsultations](http://www.hertsmere.gov.uk/planningconsultations).

Comments (1)

John Howard Norfolk says...

24/12/11


Bushey residents may wish to read and comment as this is an opportunity to make known opinions on non-car access to schools - something of local importance as three of the largest secondary schools in South West Herts are close by.

If you want a "greenway" or safe cycling route for your children then this is the opportunity to comment.

0

## Appendix C

Copy of the response form issued for representations to be made in November 2011

Representation Form for Core Strategy Development Plan Document		
	<b>Development Plan Document (DPD) Publication Stage Representation Form</b>	Ref:  (For official use only)

Name of the DPD to which this representation relates:

Revised Core Strategy

This form has two parts –

Part A – Personal Details

Part B – Your representation(s). Please fill in a separate sheet for each representation you wish to make.

Please return to Hertsmere Civic Office by 6pm on Monday 8<sup>th</sup> January 2011

Once you have completed this form please, save it and email it to [core.strategy@hertsmere.gov.uk](mailto:core.strategy@hertsmere.gov.uk) or print it off and send it to: Policy and Transport Team, Planning and Building Control, Civic Offices, Elstree Way, Borehamwood, Herts WD6 1WA

### Part A

#### 1. Personal Details\*

#### 2. Agent's Details (if applicable)

\*If an agent is appointed, please complete only the Title, Name and Organisation boxes below but complete the full contact details of the agent in 2.

Title	<input type="text"/>	<input type="text"/>
First Name	<input type="text"/>	<input type="text"/>
Last Name	<input type="text"/>	<input type="text"/>
Job Title	<input type="text"/>	<input type="text"/>
(where relevant)		
Organisation	<input type="text"/>	<input type="text"/>
(where relevant)		
Address Line 1	<input type="text"/>	<input type="text"/>
Line 2	<input type="text"/>	<input type="text"/>
Line 3	<input type="text"/>	<input type="text"/>
Line 4	<input type="text"/>	<input type="text"/>
Post Code	<input type="text"/>	<input type="text"/>
Telephone Number	<input type="text"/>	<input type="text"/>
E-mail Address	<input type="text"/>	<input type="text"/>
(where relevant)		

Please note that your comments and personal details will be available for public inspection (apart from telephone numbers and email addresses) and therefore cannot be treated as confidential. Your name and address must be completed for your representation(s) to be considered.

## Part B – Please use a separate sheet for each representation

Name or Organisation:

3. To which part of the DPD does this representation relate?

Paragraph

Policy

Key  
Diagram

Other

4. Do you consider the DPD is....?

4.(1) Legally compliant

Yes

No

4.(2) Sound

Yes

No

If you have entered No to 4.(2), please continue to Q5. In all other circumstances, please go to Q4d.

5. Do you support the Core Strategy?

Yes

No

In part

6. Do you consider the DPD is unsound because it is not:

(1) Justified

(2) Effective

(3) Consistent with national policy

7. Please give details of why you consider the DPD is not legally compliant or is unsound. Please be as precise as possible. If you wish to support the legal compliance or soundness of the DPD, please also use this box to set out your comments.

(Continue on a separate sheet)

8. Please set out what change(s) you consider necessary to make the DPD legally compliant or sound, having regard to the text you have identified at 5 above where this relates to soundness. You will need to say why this change will make the DPD legally compliant or sound. It will be helpful if you are able to put forward your suggested revised wording of any policy or text. Please be as precise as possible.

(Continue on a separate sheet)

Please note, your representation should cover succinctly all the information, evidence and supporting information necessary to support/justify the representation and the suggested change, as there will not normally be a subsequent opportunity to make further representations based on the original representation at publication stage.

After this stage, further submissions will be only at the request of the Inspector, based on the matters and issues he/she identifies for examination.

9. If your representation is seeking a change, do you consider it necessary to participate at the oral part of the examination?

No, I do not wish to participate  
at the oral examination

☐

Yes, I wish to participate at the  
oral examination

☐

10. If you wish to participate at the oral part of the examination, please outline why you consider this to be necessary.

Please note the Inspector will determine the most appropriate procedure to adopt to hear those who have indicated that they wish to participate at the oral part of the examination.

Signature:

Date:



## Appendix D

### List of organisations and persons notified at Regulation 27 submission stage November 2011

Specific Consultees:	English Nature - Essex Herts & London Team	Herts & Middlesex Wildlife Trust	Ridge Parish Council
BAA Aerodrome Safeguarding	Environment Agency	Hertsmere Borough Council	Royal Society for the Protection of Birds (RSPB)
Barnet House	Environment Agency	Highways Agency	Royal Town Planning Institute
Blackwell House	Greater London Authority	Highways House	Shenley Parish Council
Broxbourne Borough Council	Haringey Council	HM Prison Service Headquarters	Sport England (East Region)
Civic Offices	HCC Corporate Services Department	HSE Health & Safety Executive Hazardous Installations Directorate	St Albans City & District Council Civic Centre
Colney Heath Parish Council	HCC Fire & Rescue Service	Local Studies Library	Stevenage Borough Council
County Architectural Liaison	HCC Passenger Transport Unit	London Borough of Enfield Civic Centre	Thames Water Property Services
Crown Estate Office	Hertfordshire Biological Records Centre	London Borough of Harrow	Thameslink
Dacorum Borough Council	Hertfordshire Constabulary	London Colney Parish Council	The British Library
Defence Estates	Hertfordshire Constabulary	Middlesex University Library	The Coal Authority
Department for Transport	Hertfordshire County Council	Ministry of Defence	The Forestry Commission
East Herts District Council	Hertfordshire County Council	National Grid Property Holdings Limited	The Planning Inspectorate
East of England Development Agency	Hertfordshire County Council - Property	National Grid Transco	The Woodland Trust
East of England Local Government Association	Hertfordshire County Library	National Trust	Three Rivers District Council
East of England Regional Office	Hertfordshire Highways	Nationalgrid Property	Three Valleys Water Company Plc
East of England Tourist Board	Hertfordshire Local Access Forum	Natural England	Transco Network Analysis Department
EEDA	Hertfordshire Partnerships NHS Foundation Trust	Network Rail (Town Planning)	Watford Borough Council
Elstree & Borehamwood Town Council		North Hertfordshire District Council	Watford Rural Parish Council
English Golf Union		North Mymms Parish Council	Welwyn-Hatfield District Council
The National Golf Centre		Railtrack plc	
English Heritage			

Deposit Points:
Aldenham Parish Council
Borehamwood Library
Bushey Area Office
Bushey Library - Community Information
Civic Office
Oakmere Library
Radlett Library
Wyllotts Place

General and Other Consultees:
L Roberts
1 Priory Gardens
1 Thorndyke Court
1 Verulam House
10 Darnhills
30 High Firs
57 Highwood Avenue
6 Froghall Cottages
A & M Simmons
A M Homan
Agency for the Legal Deposit Libraries
Aldwyck Housing Association Ltd
Apcar Smith Planning
Architects Co. Partnership
AtisReal
Atisreal UK Ltd
Baker Pearce
Banner Homes Group plc
Barker Parry Town Planning
Barnet Meeting Room Trust
Barton Willmore
Barton Willmore Planning Partnership
BASE
Bidwells
Bidwells Property Consultants
Bio Products Laboratory
Blue Sky Planning
Boyer Planning
Boyer Planning
British Horse Society
Brown Associates
Bushey Conservative Club
Bushey Hall School
Bushey Museum
Byron House

CGMS Morley House
Chris Thomas Ltd
Cliff Walsingham & Company
Clivenden Homes
Cllr Ernie Butler
Cllr N L Payne
Colliers CRE
Community Development Agency for Hertfordshire
Corporate Technical Centre
Council for British Archaeology
Councillor J Graham
CPRE Herts
CPRE The Hertfordshire Society
D Tilbury & A Haliday
Dame Alice Owen's School
Dame Alice Owen's School
Daniel Rinsler & Co Ltd
David Ames Associates
Deloitte Drivers Jonas (on behalf of Cemex) 2011
Devplan UK
DLA Town Planning Ltd
DLP Planning Ltd 4 Abbey Court
DPDS Consulting Group
DPP
DPP
DPP LLP West One
Dr & Mrs R Swaminathan
Dr A Goddard
Dr A Puri
Dr D Slater
Dr E P Booth
Dr J Justice
Dr J R Ripley & Mr B Digby
Dr M A Grossman
Dr M J Bissett

Dr N M F Murray
Dr P H Missen
Dr S Haberman
Drivas Jonas Deloitte
Drivers Jonas LLP
Drivers Jonas on behalf of CEMEX
DTZ Planning & Development
Edaw PLC
Elliott Burkeman Minton Group
Entec UK
Fairview New Homes Ltd.
FFT Planning
Fisher German LLP
Four Counties Government Team (Beds, Cambs, Herts & Essex)
G L Property Consultants
Garden History Society
Gary Thomas Planning Works Ltd
George Wimpey Strategic Land
Great Bear Group Ltd
Gregory Gray Associates
Guinness Housing Trust
Hadley Wood Assoc. Council
Hampfarm House
Haydon Hill House (Garden Association) Ltd
Hertfordshire Building Preservation Trust
Hertfordshire Gardens Trust
Hertsmeire Council for Voluntary Service
Hightown Praetorian & Churches Housing Association

Holy Cross Church
Borehamwood
Home Builders Federation
Ian Harding Ltd.
Iceni Projects Limited
Immanuel College
Indigo Planning
J Cook
J Griffin Decorators
Jennifer Lampert Associates Ltd
Jeremy Peter Associates
Jewish Care
John Anderson Planning
John Grooms Housing Association
Jones Day
Jones Lang LaSalle
Keyworth
Kinetic Business Centre
King and Graham Chartered Surveyors
Kirkwells
KJD Solicitors
Knight Frank LLP
Lanesborough Estates
Leidh Planning
Linkwood
Littlecroft
Local Agenda 21 Transport & Pollution Group
Local Dialogue
London Travel Watch
M Hirsch
M Tee
Martineau
Maze Planning Ltd
Metroline Bus Co. Potters Bar Garage
Metropolitan Housing Partnership
Millard Architects
Miss B E Thomas
Miss D M Richardson
Miss H M Miller
Miss J Bushell
Miss M Mahony
Miss M Tomlinson
Miss P Wright
Miss A Smith
Mono Consultants Limited
Mount Grace School

Mr G Martin
Mr N R Knox
Mr T Shirley
Mr & Miss J Turner
Mr & Mr M J Martin
Mr & Mrs R S Marks
Mr & Mrs . D Weinberger
Mr & Mrs A & J Henderson
Mr & Mrs A Benstead
Mr & Mrs A Casman
Mr & Mrs A D Nicholls
Mr & Mrs A Edmunds
Mr & Mrs A Fielden
Mr & Mrs A Green
Mr & Mrs A J I Jennings
Mr & Mrs A M McCarthy
Mr & Mrs A Mitchell
Mr & Mrs A Phipps
Mr & Mrs A R Smith
Mr & Mrs A Steel & family
Mr & Mrs B Austin
Mr & Mrs B M McFarlane
Mr & Mrs B P Nayar
Mr & Mrs B Shah
Mr & Mrs Blake
Mr & Mrs Burton
Mr & Mrs C & P Orros
Mr & Mrs C Hinds
Mr & Mrs C J Rickard
Mr & Mrs C Newman
Mr & Mrs C Payne
Mr & Mrs C Sigler
Mr & Mrs Chalkley
Mr & Mrs Costello
Mr & Mrs D & C Peten
Mr & Mrs D Ackerman
Mr & Mrs D Hall
Mr & Mrs D Hanson
Mr & Mrs D J Rowson
Mr & Mrs D Melville
Mr & Mrs D Pannick
Mr & Mrs D Reason
Mr & Mrs D.C. Brothers
Mr & Mrs Daly
Mr & Mrs Dora
Mr & Mrs E & J Hill
Mr & Mrs E C Hand
Mr & Mrs E J Marynoik
Mr & Mrs E Lowe
Mr & Mrs Edmonds
Mr & Mrs F Biddle
Mr & Mrs Fabiyi

Mr & Mrs Featherman
Mr & Mrs Fitzgerald
Mr & Mrs G & J Bell
Mr & Mrs G A Watts
Mr & Mrs G Gillam
Mr & Mrs G Hodgson
Mr & Mrs G M Leonard
Mr & Mrs G Manescachi
Mr & Mrs G Park
Mr & Mrs G Strack
Mr & Mrs G Walker
Mr & Mrs G Winfield
Mr & Mrs Gell
Mr & Mrs Grant
Mr & Mrs Griffiths
Mr & Mrs H & C Casman
Mr & Mrs H Anthony
Mr & Mrs H Field
Mr & Mrs H H Smith
Mr & Mrs H J Stoneham
Mr & Mrs Hatton
Mr & Mrs Hayward
Mr & Mrs Hopkins
Mr & Mrs I Brittain
Mr & Mrs I Livingston
Mr & Mrs I Steiner
Mr & Mrs J & N Crawford
Mr & Mrs J A Dickson
Mr & Mrs J Broad
Mr & Mrs J Court
Mr & Mrs J Cummin
Mr & Mrs J Durkin
Mr & Mrs J Gerrard
Mr & Mrs J J Nelson
Mr & Mrs J Lemer
Mr & Mrs J M Devine
Mr & Mrs J Miller
Mr & Mrs J P Boland
Mr & Mrs J Rickards
Mr & Mrs J S D Jarvis
Mr & Mrs J Simpson
Mr & Mrs K & H Browne
Mr & Mrs K B Butler
Mr & Mrs K B Civval
Mr & Mrs K Costi
Mr & Mrs K Jones
Mr & Mrs K Lucas
Mr & Mrs K Newstead
Mr & Mrs K Panayiotou
Mr & Mrs K Robinson
Mr & Mrs Kenney
Mr & Mrs L & M Cohen

Mr & Mrs L Blustin
Mr & Mrs L Brafman
Mr & Mrs L C Richardson
Mr & Mrs L Carlton
Mr & Mrs L Frost
Mr & Mrs L Kingston
Mr & Mrs Lim
Mr & Mrs Lynch
Mr & Mrs M A Harris
Mr & Mrs M Donnelly
Mr & Mrs M Gerred
Mr & Mrs M Hatter
Mr & Mrs M Lawrence
Mr & Mrs M Ridge
Mr & Mrs M S Bermange
Mr & Mrs M Wallis
Mr & Mrs M Warne
Mr & Mrs N S Lefton
Mr & Mrs NL Payne
Mr & Mrs Oke
Mr & Mrs P Cappuccinni
Mr & Mrs P Grahame
Mr & Mrs P Hartnell
Mr & Mrs P J Hinshelwood
Mr & Mrs P Mitchell
Mr & Mrs P Saggars
Mr & Mrs P Shayer
Mr & Mrs P Wyatt
Mr & Mrs Patel
Mr & Mrs Pattrick
Mr & Mrs Psaras
Mr & Mrs R Ashenden
Mr & Mrs R Baker
Mr & Mrs R Brazell
Mr & Mrs R Gilbert
Mr & Mrs R Howard
Mr & Mrs R King
Mr & Mrs R Lees
Mr & Mrs R M Hale
Mr & Mrs R Mahoney
Mr & Mrs R Wallace
Mr & Mrs R Watson
Mr & Mrs R Willox
Mr & Mrs R Wise
Mr & Mrs S Bell
Mr & Mrs S Caterer
Mr & Mrs S E Bell
Mr & Mrs S Frot
Mr & Mrs S Greenfield
Mr & Mrs S J Noakes
Mr & Mrs S Katz
Mr & Mrs S Klein

Mr & Mrs S Marett
Mr & Mrs S Milne
Mr & Mrs S Sweeting
Mr & Mrs S Williams
Mr & Mrs Stickland
Mr & Mrs Strack
Mr & Mrs T J Ashby
Mr & Mrs W E Brant
Mr & Mrs W Hanwell
Mr & Mrs W L Edwards
Mr & Mrs W Marsterson
Mr & Mrs Yefet
Mr & Ms A Shah
Mr & Ms C Curran
Mr & Ms D Reid
Mr & Ms Hickey
Mr & Ms K Simmonds
Mr & Ms L A Cohen
Mr & Ms Walker
Mr & Ms Walton
Mr A J Marks
Mr A B Wiggs
Mr A Brompton
Mr A Davey
Mr A Doel
Mr A G Snaith
Mr A Grady
Mr A Hadley
Mr A Julius
Mr A Konizi
Mr A Lewis
Mr A Lowndes
Mr A M Carter
Mr A M Norton
Mr A O'Brien
Mr A Prigmore
Mr A R Davidson
Mr A R Taylor
Mr A Rosenfeld
Mr A Sigler
Mr A Theobald
Mr A Thomas
Mr A W Wright
Mr A Wien
Mr A J Woolidge
Mr and Mrs A E Burr
Mr and Mrs A Haines
Mr and Mrs B Boston
Mr and Mrs D Jolly
Mr and Mrs D Reissner
Mr and Mrs Gerred

Mr and Mrs Harwin
Mr and Mrs M E Stovey
Mr and Mrs P R Kamdar
Mr and Mrs R Gale
Mr and Mrs Rogers
Mr and Mrs Shepherd
Mr and Mrs Smith
Mr and Mrs Thomas
Mr and Mrs V Patel
Mr B Crouch
Mr B Dooris
Mr B Flashman
Mr B Heath & Ms J Arthur
Mr B J Weller
Mr B K Livingston
Mr B L Hurst
Mr B Lawrence
Mr B P Holt
Mr B Reynolds
Mr B Tyler
Mr B Wilson
Mr C Cannon
Mr C Hopkins
Mr D A Tomsett
Mr D Annal
Mr D Ashbolt
Mr D Clements
Mr D Connatty
Mr D Davis
Mr D DeRivaz
Mr D Dover
Mr D E Wetherly
Mr D Fordham
Mr D Goddard
Mr D Gordon
Mr D Gunn
Mr D H Jones
Mr D Halls
Mr D J Coombes
Mr D J Horobin
Mr D M Lane
Mr D McKinley
Mr D Mitchell
Mr D Mitchell
Mr D Murrey
Mr D Popkin
Mr D Richardson
Mr D Ryner
Mr D Stewart
Mr D Traill-Stevenson
Mr D Vickers

Mr D Wilkinson
Mr D Winton
Mr D Wood
Mr E Brewer
Mr E Caprario
Mr E Cross
Mr E E Lewis
Mr E H Wiggins
Mr E J McGuire
Mr E Jones
Mr E Minn
Mr E Roach
Mr F Fitzjohn
Mr F G Thomas
Mr F Hayward
Mr F.H. Atkinson
Mr Forman
Mr G B Dawe
Mr G Bund
Mr G D Swaine
Mr G F Biggs
Mr G R Brazel
Mr G Silver
Mr G T C Barnes
Mr G Taylor
Mr G Theodossaides
Mr G Windsor-Lewis
Mr G Wright
Mr Gatfield
Mr Gill & Miss Stammers
Mr Gwynn
Mr H C Wood
Mr H C Young
Mr H Dawson
Mr H Engelsman
Mr H Martin
Mr Hawkins
Mr I Batchelor
Mr I Bell
Mr I Lawrence
Mr I S MacKay
Mr J A Plested
Mr J Beardwell
Mr J Biscoe
Mr J C Baker
Mr J C Doughty
Mr J C G Lockey
Mr J Cummins
Mr J D Birch
Mr J D King
Mr J Davey

Mr J Duncan
Mr J E Fisher
Mr J Falk
Mr J Fort
Mr J Hathway
Mr J Keaveney
Mr J Larholt
Mr J Lickiss
Mr J M Lickorish
Mr J O'Keeffe
Mr J Pepper
Mr J R Gibson
Mr J W L Gillams
Mr J W Payne
Mr J Webber
Mr J. S Kempster
Mr K Atkins
Mr K Bryan
Mr K Jones
Mr K McManus
Mr K Sheppard
Mr K Taylor
Mr K Toombs
Mr L B Purser
Mr L Fuller
Mr L Kaneria
Mr L Potter
Mr L Shavick
Mr L W Major
Mr L Wood
Mr M A Jeens
Mr M A K Smith
Mr M Ahmad
Mr M Armoogum
Mr M Ballard
Mr M Beral
Mr M D Potter
Mr M Dawson
Mr M E Whitehead
Mr M F Cornish
Mr M Freedman
Mr M G Ballard
Mr M Helyer & Miss Allwright
Mr M Hoban
Mr M J James
Mr M J Morgan
Mr M J Ridley
Mr M Jones
Mr M Levy
Mr M McDonagh
Mr M N Elliott

Mr M O'Brien
Mr M Page
Mr M Possener
Mr M Purdom
Mr M Rajabali
Mr M Slyper
Mr M Walters
Mr M Whitcutt
Mr N Bassett
Mr N Green
Mr N Taylor
Mr N Todd
Mr P A Trotter
Mr P Belzman
Mr P Berman
Mr P C Marx
Mr P Cousins
Mr P Daly
Mr P Fenton
Mr P Findlay
Mr P Hagger
Mr P Marley
Mr P Paraskevaides
Mr P S Vincent
Mr P Winocour
Mr Patel
Mr R Allen
Mr R Chrysanthos
Mr R Culnane
Mr R Dacosta
Mr R Earl
Mr R J Wyatt
Mr R Kansagra
Mr R Kirk & Ms J Marston
Mr R Lewy
Mr R Marlow
Mr R Matthews
Mr R Moss
Mr R Needleman
Mr R P Leon
Mr R Reid
Mr R S Howard
Mr R Stephens
Mr R W Disborough
Mr Rodol
Mr Rose
Mr Ross
Mr S B Gibbs
Mr S Braidman
Mr S Bury
Mr S Davis

Mr S Grossman
Mr S Jindal
Mr S Mahendran
Mr S Masters
Mr S Patel
Mr S Powell
Mr S W Boland
Mr T Horrod
Mr T J Cunningham
Mr T J Flood
Mr T P Bruck
Mr T Wells
Mr T Willmott
Mr W Gold
Mr W R C Ogden
Mr Webster
Mr Whitehead
Mr Y Haribhai
Mr/Mrs David
Mr/Ms A Gibbs
Mr/Ms A Miller
Mr/Ms A Rostron
Mr/Ms B Riley
Mr/Ms C Stevens
Mr/Ms C Tarrant
Mr/Ms D Cox
Mr/Ms D Garrett
Mr/Ms D J Root
Mr/Ms D Landes
Mr/Ms D Stern
Mr/Ms E Bass
Mr/Ms E Richards
Mr/Ms G Cohen
Mr/Ms G Rowe
Mr/Ms H Goodman
Mr/Ms J D Sullivan
Mr/Ms J Dodwell
Mr/Ms J Gavin
Mr/Ms J Leslie
Mr/Ms J Randall
Mr/Ms J Shaw
Mr/Ms J Swain
Mr/Ms L Leventhal
Mr/Ms M Doneo
Mr/Ms M Harman
Mr/Ms M Laurier
Mr/Ms M Vine
Mr/Ms P Bird
Mr/Ms P J Blakeley
Mr/Ms P McDonald

Mr/Ms P Page
Mr/Ms Patel
Mr/Ms R Batter
Mr/Ms R Clark
Mr/Ms T Bowden
Mr/Ms T Jearrad
Mr/Ms V Pearce
Mrs & Miss E M Davies
Mrs A El Idrissi
Mrs A Garcia
Mrs A Gibson
Mrs A Herman
Mrs A Holland
Mrs A J Castelow
Mrs A Lambert
Mrs A Mackintosh
Mrs A MacPherson
Mrs A Monsellato
Mrs A R Miller
Mrs A Short
Mrs A Wallace
Mrs B Gill
Mrs B Howard
Mrs B McCabe
Mrs B Mermet
Mrs B R Allen
Mrs B Sheehan
Mrs B Welch
Mrs C Allday
Mrs C Curran
Mrs C Dudman
Mrs C Large
Mrs C Lye
Mrs C M Oxley
Mrs C Matley
Mrs CAS Bennett
Mrs Cook
Mrs Craig
Mrs D A Cranfield
Mrs D M Corrie
Mrs D M Smith
Mrs D M Spencer
Mrs D Robertson
Mrs DCM Smith
Mrs DH Beare
Mrs E Cootes
Mrs E Craythorne
Mrs E Hughes
Mrs E M Detheridge
Mrs E Makey

Mrs E Pritchard
Mrs E Wackrow
Mrs E Wicks
Mrs F Jolly
Mrs F Todd
Mrs Freedman
Mrs G B Lewis
Mrs G Mapplebeck
Mrs G Pdahtzur
Mrs G Tarrant
Mrs H Farkas
Mrs H Kibbler
Mrs H M King
Mrs H Moses
Mrs H Paterson
Mrs I L Evans
Mrs I M Howard
Mrs J A Flack
Mrs J A John
Mrs J Davis
Mrs J Fox
Mrs J G Mayers
Mrs J Jones
Mrs J Large
Mrs J M Meltzer
Mrs J M Young
Mrs J Miles
Mrs J Murray
Mrs J R De Charriere
Mrs J S Stranks
Mrs J Stephens
Mrs J Stilwell
Mrs J W Major
Mrs J Whitham
Mrs J Wilks
Mrs J Woolgar
Mrs Jacobs
Mrs Johnson
Mrs K Blake
Mrs K Blockley
Mrs K Caneparo
Mrs K Gerson
Mrs K Smith
Mrs L A Claydon
Mrs L Davis
Mrs L Haselden
Mrs L J Curry
Mrs L Korn
Mrs L Worth
Mrs L A Edmunds
Mrs M Adams

Mrs M Barton
Mrs M Brown
Mrs M Byrne
Mrs M C V Marsh
Mrs M Curtis
Mrs M E Matley
Mrs M E Proctor
Mrs M Hamment
Mrs M Harris
Mrs M J Kings
Mrs M Kirk
Mrs M Lawson
Mrs M Moss
Mrs M Nickolds
Mrs M Norcross
Mrs M Pritchard
Mrs M Simpson
Mrs M Tobias
Mrs M Williams
Mrs McMaster
Mrs N Fisher
Mrs N Fisher
Mrs N Golding
Mrs N Lambe
Mrs P C Richardson
Mrs P Dawes
Mrs P Diamond
Mrs P J Hutchings
Mrs P J Nash
Mrs P Rose
Mrs Pinto
Mrs Porter
Mrs Price
Mrs R Finestone
Mrs R Wilson
Mrs S Baker
Mrs S Barnes
Mrs S Chaney
Mrs S Nichols
Mrs S Nolan
Mrs S Park
Mrs S Radford
Mrs S Rendle
Mrs S Sheard
Mrs T Carrington
Mrs T J Merrills
Mrs V F Dimmer
Mrs V Wintle
Mrs V.A. Parker
Mrs Y Hearn
Mrs Y Ponting

Mrs Yannagas
Ms A Brooker
Ms A Hammond
Ms B Dawson
Ms B H Jordan
Ms C Cruickshank
Ms C Edwards
Ms C Munns & Mr P Crawley
Ms E McMorran
Ms E Richards
Ms F Carmicheal
Ms F Clarkson
Ms H Soultanian
Ms I Vile
Ms J Baungally
Ms J Dear
Ms J G Dibley
Ms J Knighton
Ms J Lee
Ms J Lucas
Ms J Mayes
Ms J McCarten
Ms K Taylor
Ms L Godfrey
Ms L Leigh
Ms L Pagni
Ms L Tarragano
Ms L Thornton
Ms L Wren
Ms M Baker
Ms M Goggin
Ms M Hanson
Ms M Lewis
Ms M Wheatley
Ms P Gilby
Ms R Haywood
Ms R Lewin
Ms S Legate
Ms S Pasha
Ms S Sandleson
Ms S Singer
Ms S Solomons
Ms Y Harris
MVM Planning
Mymmsmead Land Trust
Nathaniel Lichfield & Partners
National Institute for Biological Standards
New Cottage Farm
Newberries JMI School
Newstead

Oaktree Landscape Garden Services
Old Church Court
Open Spaces Society
Origin Group St Pancras Housing
Patchetts Green Bridleways Trust
Peacock and Smith
Pearson Associates
Phillips Planning services Ltd
Planning Issues
Planning Perspectives
Planning Works Ltd
PPML Consulting Ltd
Prof & Mrs R Clark
Queens' School
R Harwood
RAID Residents Against Inappropriate Development
Redrow Homes (Eastern) Ltd. 2 Aurum Court
Rev R Eames
Revd M Carter
Rialto Homes Ltd
Rivendell, Greenacres
Robson Planning Consultancy
Rosenfelder Associates
RPS on behalf of Willows farm
RPS Planning
Rumball Sedgwick
Scott Wilson
Shenley Village Society
Sheppard Robson
Shire Consulting
Silk Planning
Sir R Sweetnam
Society for Protection of Ancient Bldgs
South Midlands & Greater London Housing Society Ltd
South Mimms & Ridge Protection Committee
SPOKES
SportPark
St Modwen PLC
Stansgate Planning Consultants

Stewart Management and Planning Solutions
Stewart Ross Associates
Storey's Gate
Strutt & Parker
Strutt Parker
Swanland Road Residents' Group
Sworders Agricultural The Gatehouse
System Design & Engineering - NSS
Tabard Rugby Football Club
Taylor Wimpey UK Ltd, Taylor Wimpey North Thames
Terrence O'Rourke
Tesco Stores Ltd
Tetlow King Planning

Thames Water Devcon Team
Thames Water Property Services Limited
The Barn
The British Wind Energy Association
The Bushey Forum
The Farm House
The Mitfords
The National Federation of Gypsy Liaison Groups, Unit 3
The Old Stables
The Planning Bureau Limited
The Radlett Society and Green Belt Association
The Royal Veterinary College
The Showmans Guild of Great Britain
The Theatres Trust

The Wych Elms
Three Valleys Water PLC
Turley Associates on behalf Potters Bar Golf Course
UK House
Vincent & Goring
W Stern
Watford Mail Centre Room 129a
Welcome Break Group Ltd
Whitby
Widacre Homes Ltd
Woolf Bond Planning
WYG Planning & Design



## **Appendix E**

### **Summary of representations made in Regulation 27 stage**