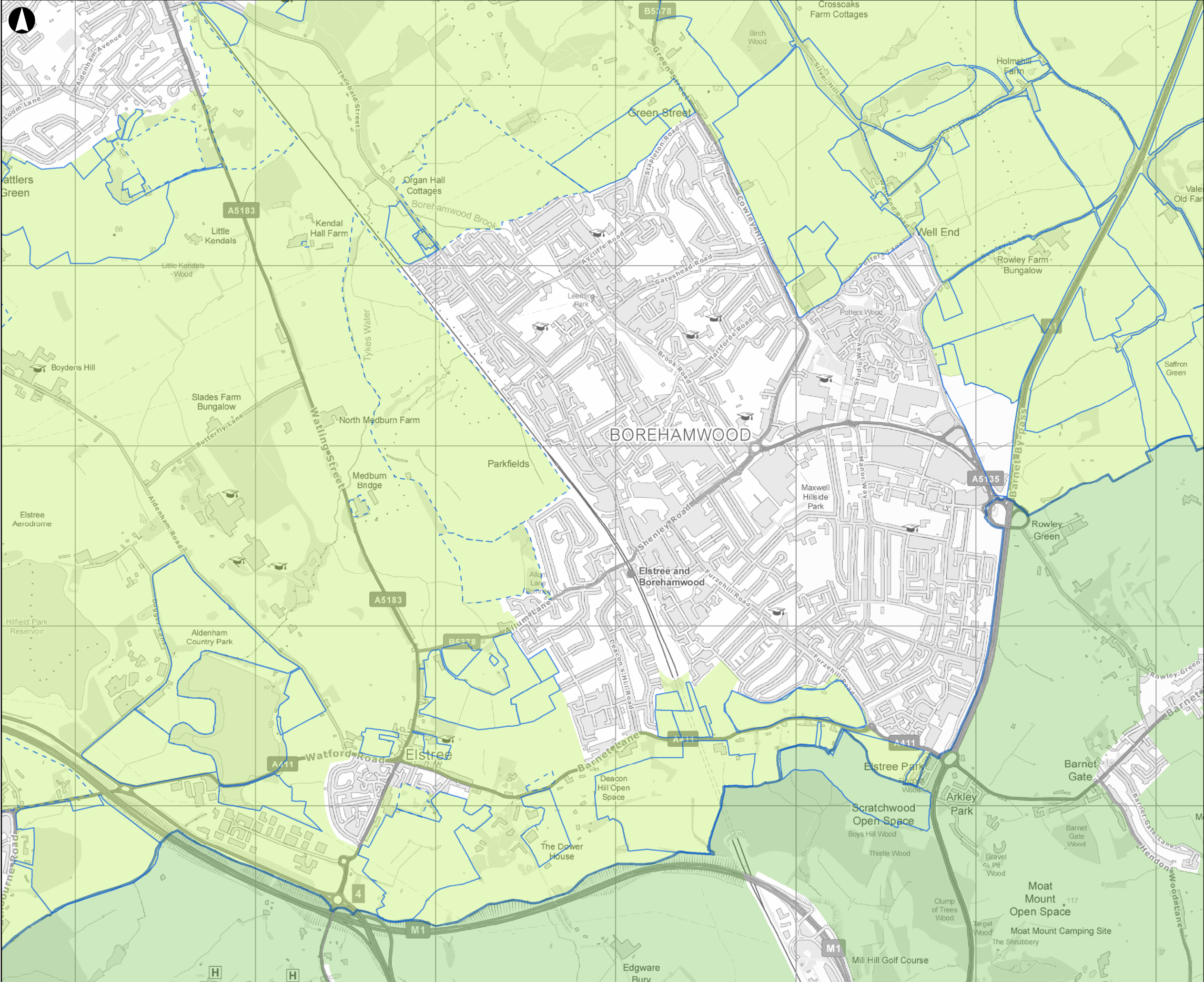


Appendix B

HELAA, Garden Village and
Further Sites Considered



Legend

HELAA Sites

Garden Village Sites

Further Sites

Hertsmere Borough Boundary

Hertsmere Green Belt

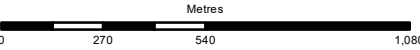
Neighbouring Green Belt

The HELAA sites database used for the study, was an emerging document and represents a position in time (Spring 2018) with regards to the HBC's work on available sites. It will therefore not necessarily correspond with the final sites database used to develop the Local Plan strategy.

Contains OS Data
© Crown copyright and database rights 2016 OS EUL 100017428

P1	10-04-18	ML	ML	AB
----	----------	----	----	----

Issue	Date	By	Chkd	Appd
-------	------	----	------	------



ARUP

13 Fitzroy Street
London W1T 4BQ
Tel +44 20 7636 1531 Fax +44 20 7580 3924
www.arup.com

Client
Hertsmere Borough Council

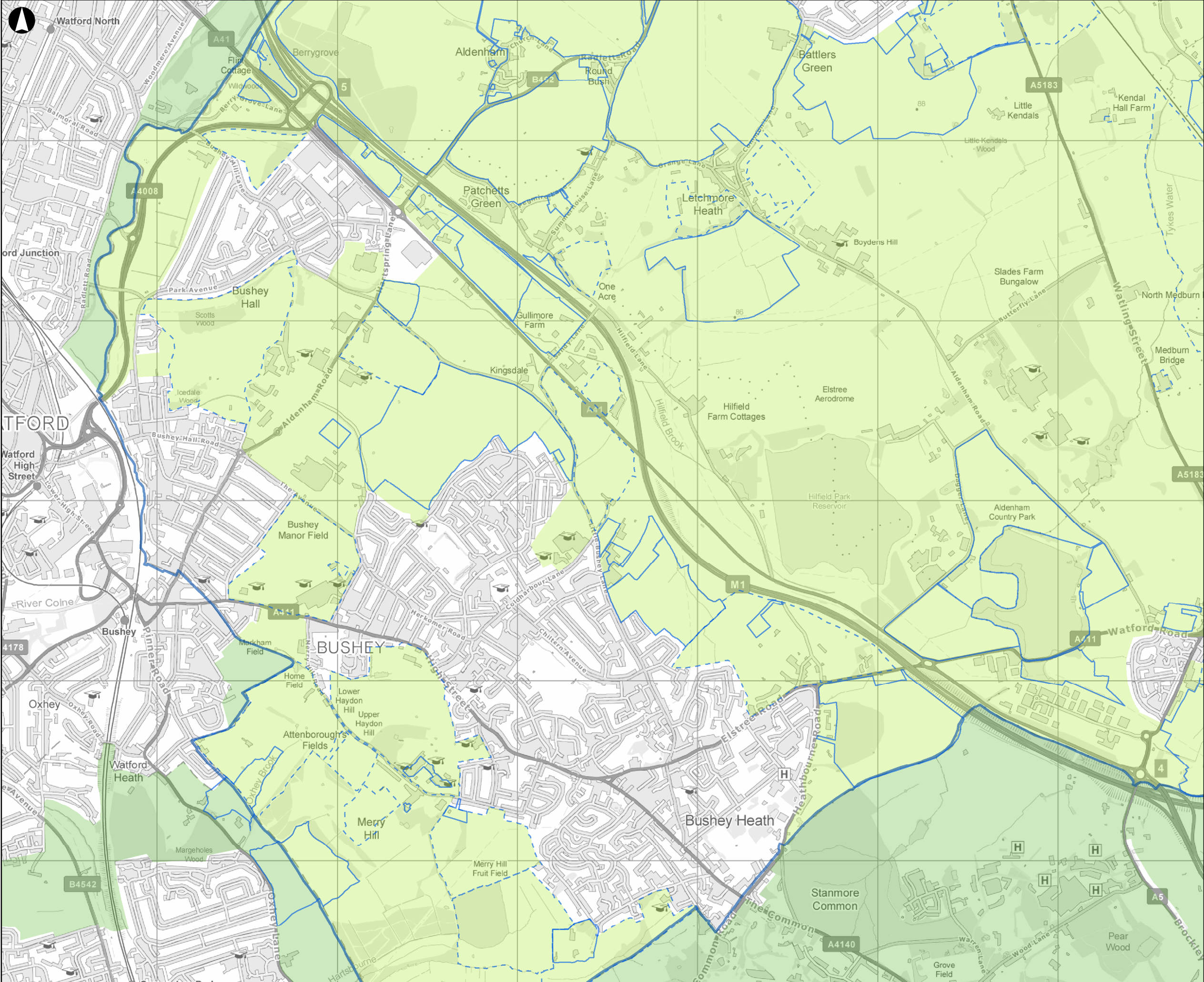
Job Title
Hertsmere Green Belt Assessment (Stage 2)

HELAA and Further Sites Considered (Borehamwood and Elstree)

Scale at A3
1:20,000

Job No 261001-00	Drawing Status Issue
----------------------------	--------------------------------

Drawing No 3.3a	Issue P1
---------------------------	--------------------



Legend

HELAA Sites

Garden Village Sites

Further Sites

Hertsmere Borough Boundary

Hertsmere Green Belt

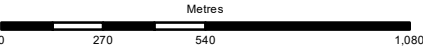
Neighbouring Green Belt

The HELAA sites database used for the study, was an emerging document and represents a position in time (Spring 2018) with regards to the HBC's work on available sites. It will therefore not necessarily correspond with the final sites database used to develop the Local Plan strategy.

Contains OS Data
© Crown copyright and database rights 2016 OS EUL 100017428

P1	10-04-18	ML	ML	AB
----	----------	----	----	----

Issue	Date	By	Chkd	Appd
-------	------	----	------	------



ARUP

13 Fitzroy Street
London W1T 4BQ
Tel +44 20 7636 1531 Fax +44 20 7580 3924
www.arup.com

Client

Hertsmere Borough Council

Job Title

Hertsmere Green Belt Assessment
(Stage 2)

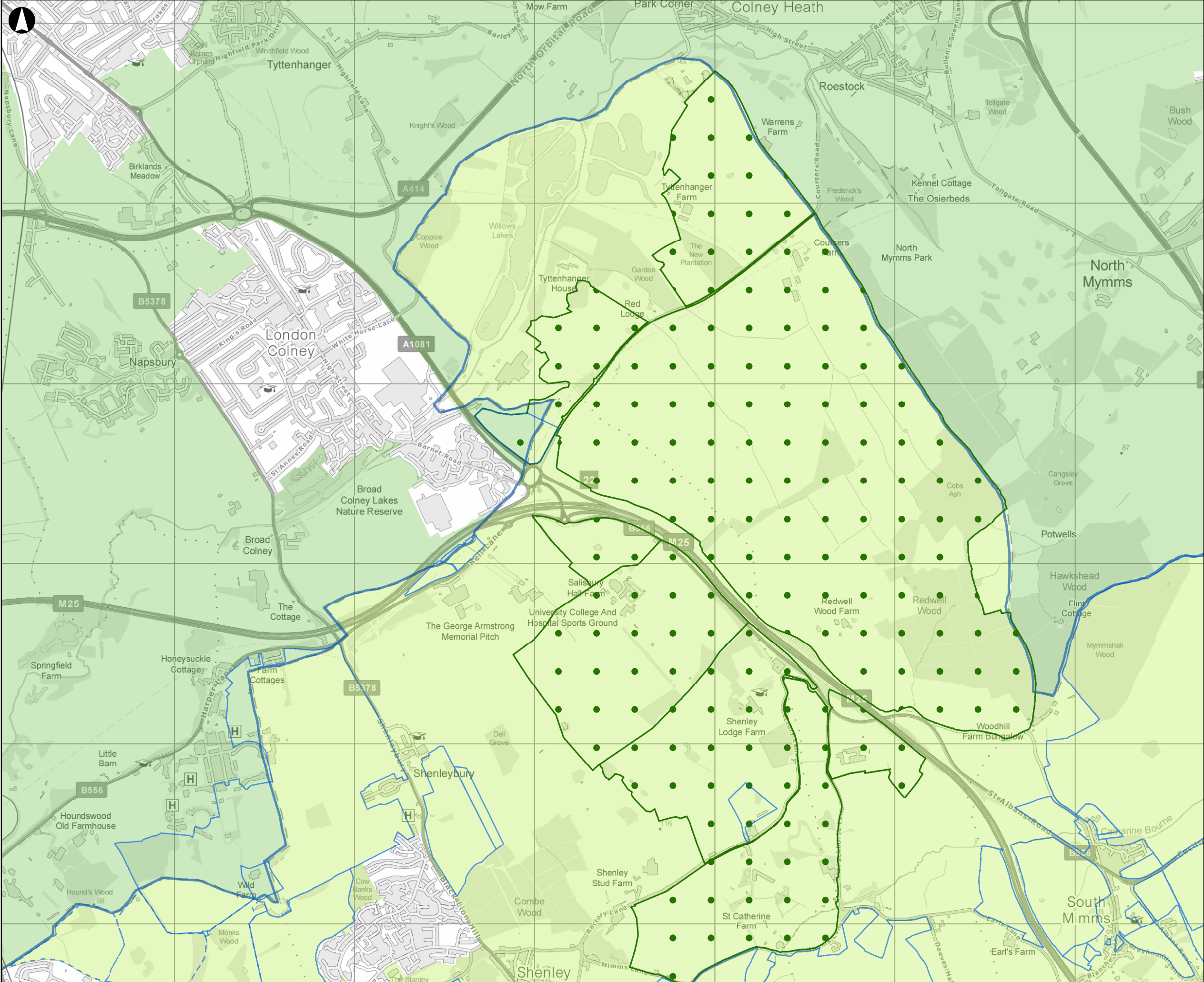
HELAA and Further Sites
Considered
(Bushey)

Scale at A3

1:20,000

Job No	Drawing Status
261001-00	Issue

Drawing No	Issue
3.3b	P1



Legend

HELAA Sites

Garden Village Sites

Further Sites

Hertsmere Borough Boundary

Hertsmere Green Belt

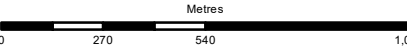
Neighbouring Green Belt

The HELAA sites database used for the study, was an emerging document and represents a position in time (Spring 2018) with regards to the HBC's work on available sites. It will therefore not necessarily correspond with the final sites database used to develop the Local Plan strategy.

Contains OS Data
© Crown copyright and database rights 2016 OS EUL 100017428

P1	10-04-18	ML	ML	AB
----	----------	----	----	----

Issue	Date	By	Chkd	Appd
-------	------	----	------	------



ARUP

13 Fitzroy Street
London W1T 4BQ
Tel +44 20 7636 1531 Fax +44 20 7580 3924
www.arup.com

Client

Hertsmere Borough Council

Job Title

Hertsmere Green Belt Assessment
(Stage 2)

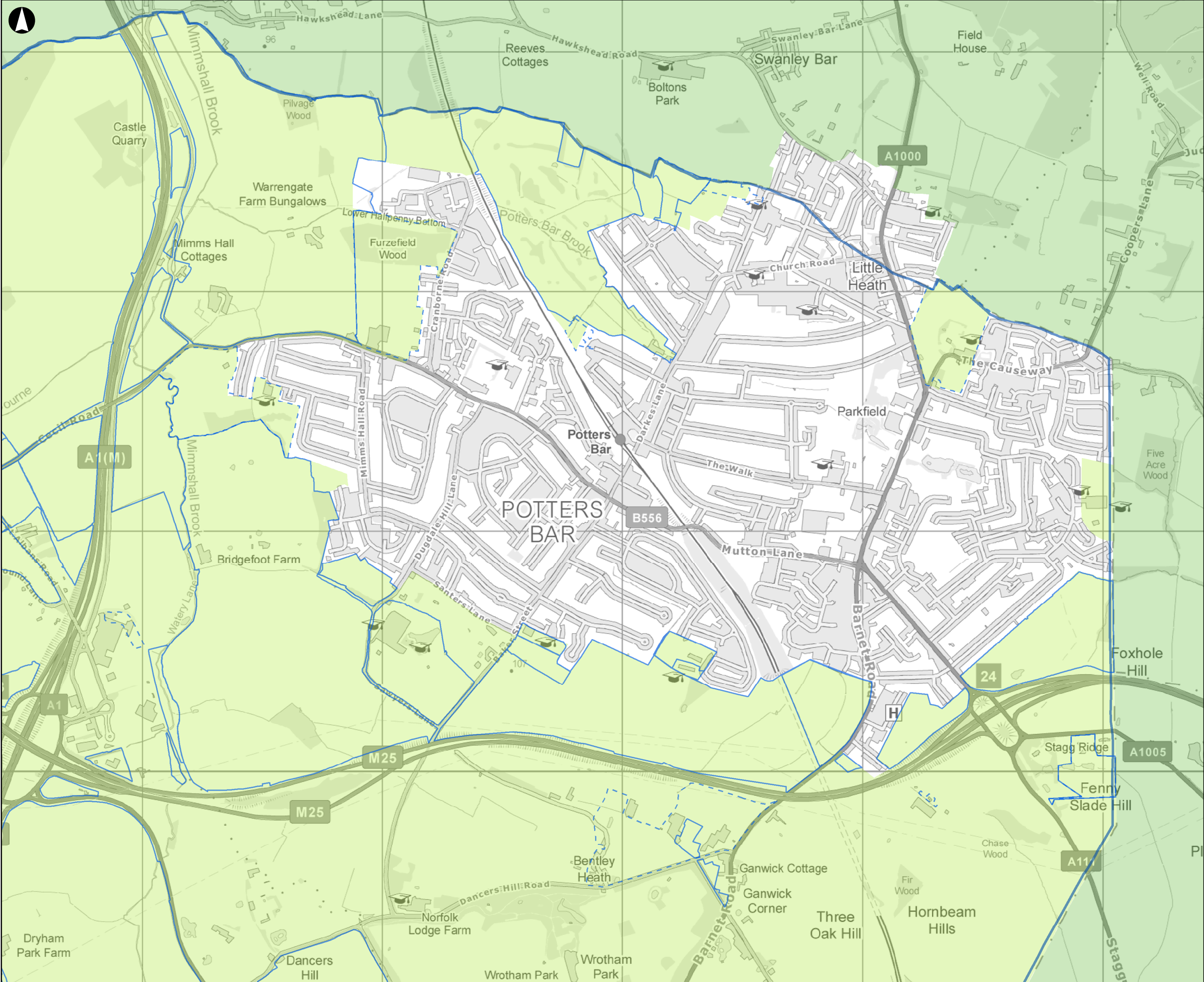
HELAA Sites, Garden Villages
and Further Sites Considered
(London Colney)

Scale at A3

1:20,000

Job No	Drawing Status
261001-00	Issue

Drawing No	Issue
3.3c	P1



Legend

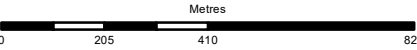
- HELAA Sites
- Garden Village Sites
- Further Sites
- Hertsmere Borough Boundary
- Hertsmere Green Belt
- Neighbouring Green Belt

The HELAA sites database used for the study, was an emerging document and represents a position in time (Spring 2018) with regards to the HBC's work on available sites. It will therefore not necessarily correspond with the final sites database used to develop the Local Plan strategy.

Contains OS Data
© Crown copyright and database rights 2016 OS EUL 100017428

P1	10-04-18	ML	ML	AB
----	----------	----	----	----

Issue	Date	By	Chkd	Appd
-------	------	----	------	------



ARUP

13 Fitzroy Street
London W1T 4BQ
Tel +44 20 7636 1531 Fax +44 20 7580 3924
www.arup.com

Client
Hertsmere Borough Council

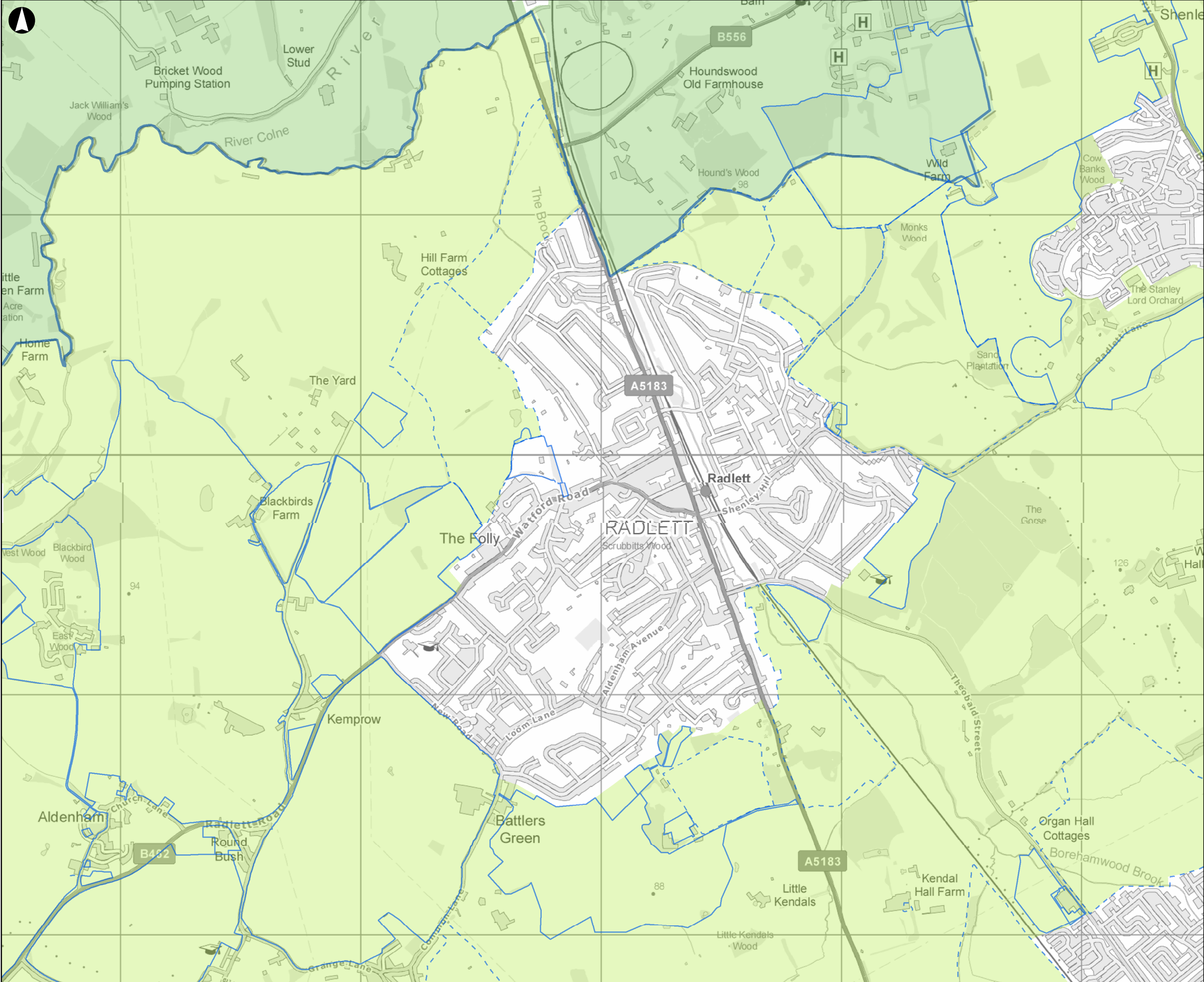
Job Title
Hertsmere Green Belt Assessment (Stage 2)



Scale at A3
1:15,000

Job No 261001-00	Drawing Status Issue
----------------------------	--------------------------------

Drawing No 3.3d	Issue P1
---------------------------	--------------------



Legend

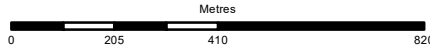
- HELAA Sites
- Garden Village Sites
- Further Sites
- Hertsmere Borough Boundary
- Hertsmere Green Belt
- Neighbouring Green Belt

V@P0S0DA 3 AaaA^A^aA
t|A@Ac a EA aA A{ ^!*q *A
a[& { ^) aA^] |^A^} oAA
][•aa } A Aa ^A] |a *AaFI DA
aaA* aaA A A@PB0CA [|A A
[] AaaA^A a EA a|A@ |^ |A
} [a^& • aa A | |^ •] [] aA aa
o Aa aa a AaaA^A^aA A
a^c^ [] A@ A| aaU|a A da^ EA

Contains OS Data
© Crown copyright and database rights 2016 OS EUL 100017428

P1	10-04-18	ML	ML	AB
----	----------	----	----	----

Issue	Date	By	Chkd	Appd
-------	------	----	------	------

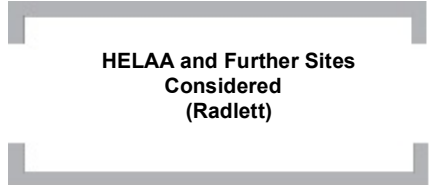


ARUP

13 Fitzroy Street
London W1T 4BQ
Tel +44 20 7636 1531 Fax +44 20 7580 3924
www.arup.com

Client
Hertsmere Borough Council

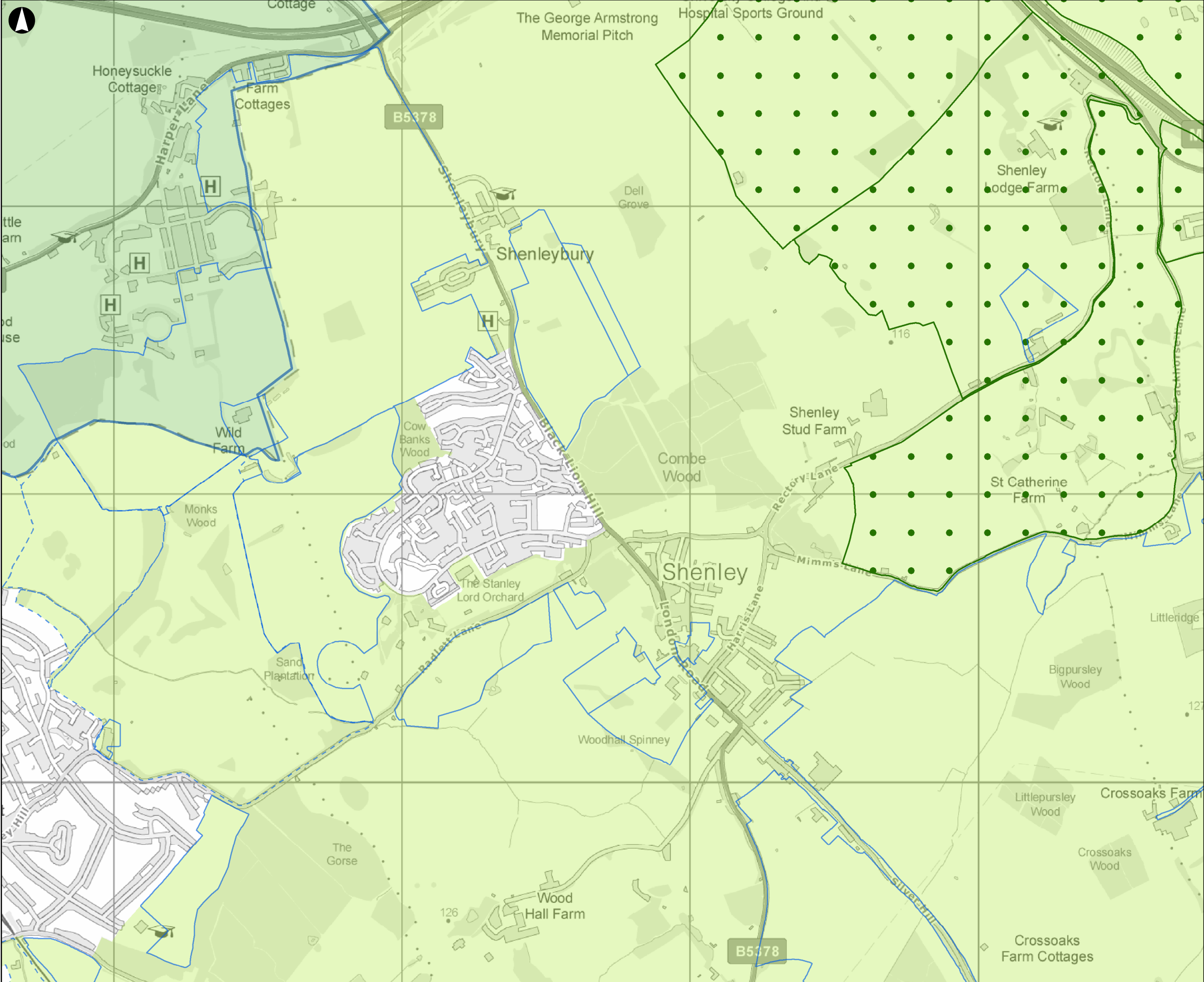
Job Title
**Hertsmere Green Belt Assessment
(Stage 2)**



Scale at A3
1:15,000

Job No 261001-00	Drawing Status Issue
----------------------------	--------------------------------

Drawing No 3.3e	Issue P1
---------------------------	--------------------



Legend

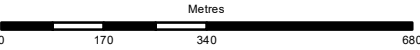
- HELAA Sites
- Garden Village Sites
- Further Sites
- Hertsmere Borough Boundary
- Hertsmere Green Belt
- Neighbouring Green Belt

The HELAA sites database used for the study, was an emerging document and represents a position in time (Spring 2018) with regards to the HBC's work on available sites. It will therefore not necessarily correspond with the final sites database used to develop the Local Plan strategy.

Contains OS Data
© Crown copyright and database rights 2016 OS EUL 100017428

P1	10-10-18	ML	ML	AB
----	----------	----	----	----

Issue	Date	By	Chkd	Appd
-------	------	----	------	------



ARUP

13 Fitzroy Street
London W1T 4BQ
Tel +44 20 7636 1531 Fax +44 20 7580 3924
www.arup.com

Client
Hertsmere Borough Council

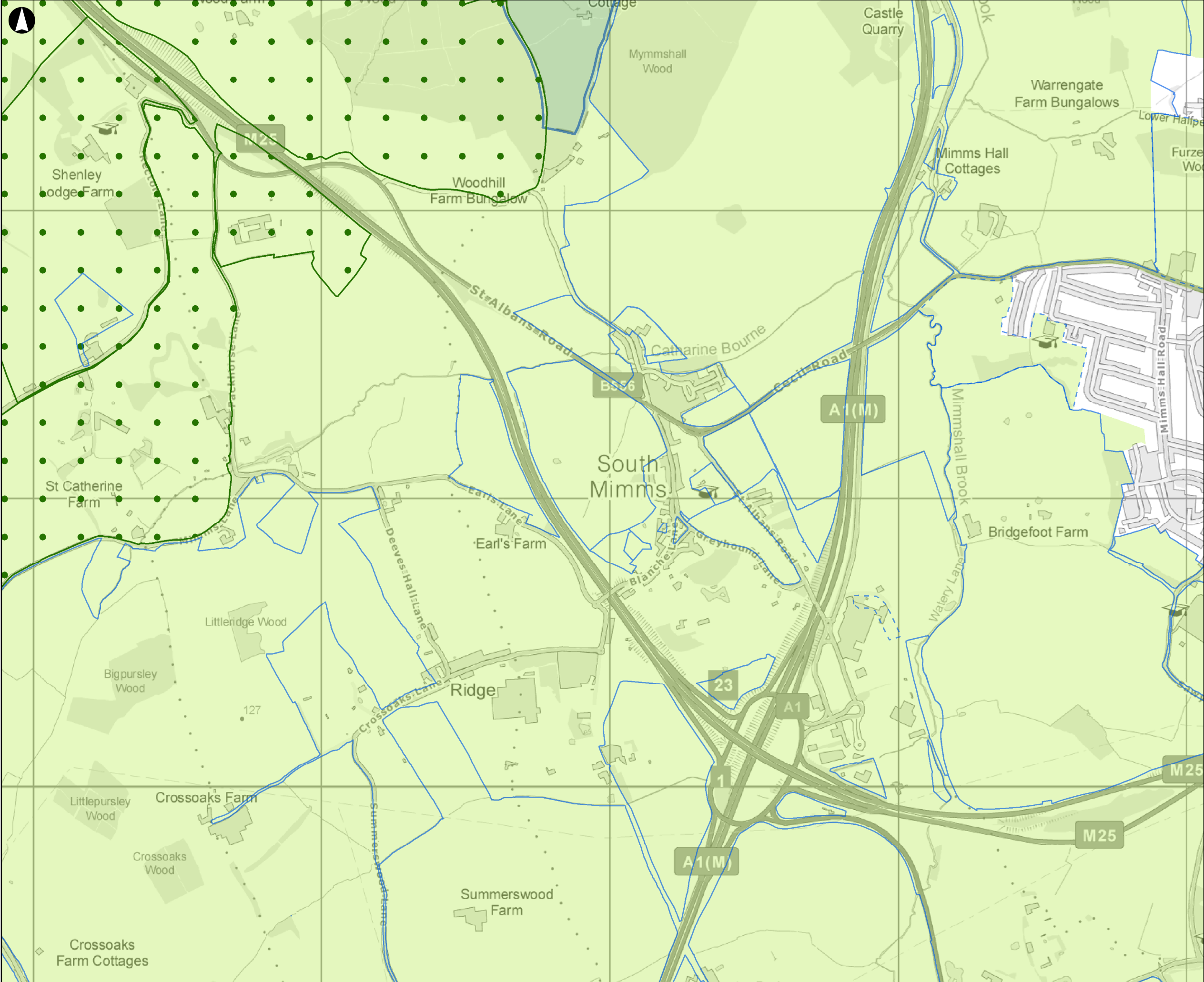
Job Title
Hertsmere Green Belt Assessment (Stage 2)

HELAA Sites, Garden Villages and Further Sites Considered (Shenley)

Scale at A3
1:12,500

Job No 261001-00	Drawing Status Issue
----------------------------	--------------------------------

Drawing No 3.3f	Issue P1
---------------------------	--------------------



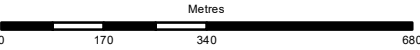
- Legend**
- HELAA Sites
 - Garden Village Sites
 - Further Sites
 - Hertsmere Borough Boundary
 - Hertsmere Green Belt
 - Neighbouring Green Belt

The HELAA sites database used for the study, was an emerging document and represents a position in time (Spring 2018) with regards to the HBC's work on available sites. It will therefore not necessarily correspond with the final sites database used to develop the Local Plan strategy.

Contains OS Data
© Crown copyright and database rights 2016 OS EUL 100017428

P1	10-10-18	ML	ML	AB
----	----------	----	----	----

Issue	Date	By	Chkd	Appd
-------	------	----	------	------



ARUP

13 Fitzroy Street
London W1T 4BQ
Tel +44 20 7636 1531 Fax +44 20 7580 3924
www.arup.com

Client
Hertsmere Borough Council

Job Title
Hertsmere Green Belt Assessment (Stage 2)

HELAA Sites, Garden Villages and Further Sites Considered (South Mimms)

Scale at A3
1:12,500

Job No 261001-00	Drawing Status Issue
----------------------------	--------------------------------

Drawing No 3.3g	Issue P1
---------------------------	--------------------