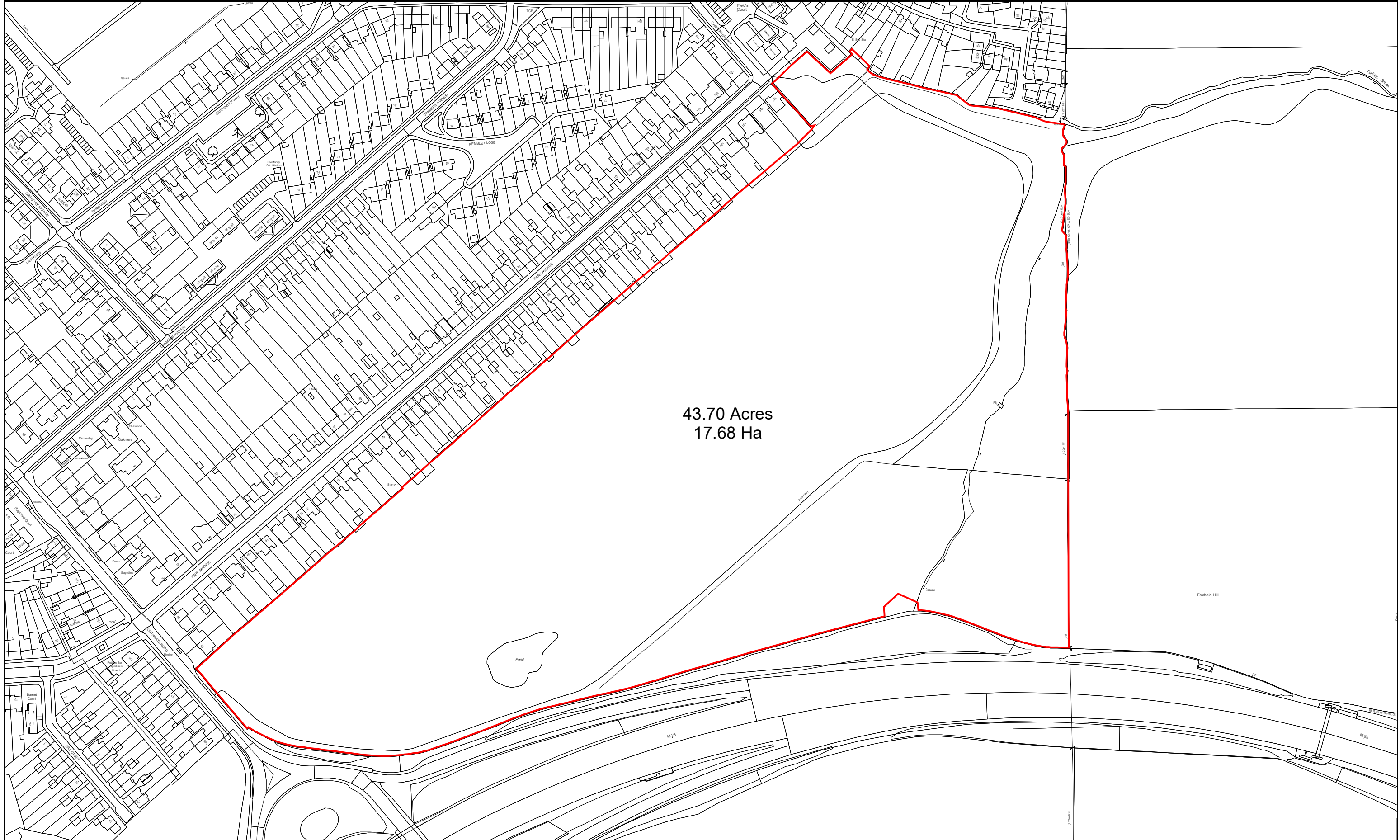
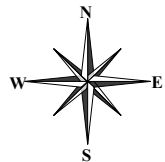


# Land East of Southgate Road, Potters Bar



43.70 Acres  
17.68 Ha

Mapping Department  
Knight Frank LLP  
Ramsbury House, 22 High Street  
Hungerford, Berkshire, RG17 0NF  
(t) 01488 688508  
(e) mapping@knightfrank.com



Date: 20:11:19 Drawn By: MMcC Scale: 1:2500 @ A3 Plan Ref:

Title **Land East of Southgate Road,  
Potters Bar**

This Plan is published for guidance only, and although it is believed to be correct its accuracy is not guaranteed, nor is it intended to form part of any contract. ©Crown copyright and database rights 2019. Licence No. 100021721