

Hertsmere News



Hertsmere Borough Council's magazine

Winter 2020



Keep safe at Christmas

Inside this issue

**Coronavirus updates | New mayor appointed
Keeping healthy | Jobs boost for the borough**



Pictured: Deputy Mayor Anne Swerling and fluffy mascot YOCI on judging duties

Festive winners

Dozens of children from primary schools in the borough have brought some much-needed festive cheer by entering our annual seasonal card competition.

We received more than 50 dazzling designs for our corporate electronic greeting card and the Mayor of Hertsmere's seasonal card from youngsters aged 11 or below who live or go to school in the borough.

The winning entries were chosen by the Deputy Mayor of Hertsmere, Cllr Anne Swerling. She was given a helping hand by YOCI, the Hertfordshire Year of Culture's fluffy mascot.

The winners were:

Nathan Mgbor, aged eight, from Ladbrooke JMI School in Potters Bar, who was named one of the winners of this year's contest. His design will be

used on the Mayor of Hertsmere's card.

Edie Cogger, aged 10, from Bushey Manor Junior School, was also a first place winner. Her design will be used as our corporate electronic card and is pictured on the front cover.

Daniyal Raza, aged six, from Saffron Green Primary School in Borehamwood, and **Ellie-Lara Paphitis**, aged five, from Ladbrooke JMI School were named runners-up.

All four winners received a certificate, gift voucher, a large poster version of their design and a pack of their own cards to give to friends and family.

New Mayor appointed

A new Mayor of Hertsmere has been sworn in following the death of Councillor Cynthia Barker.

The mayoral chains have been passed back to Councillor Alan Plancey, who will remain in post until the end of this Mayoral year in May 2021. Cllr Plancey was Mayor from May 2019 until June, when Cllr Barker was sworn in. Cllr Barker died four months later after a short period of illness. Cllr Anne Swerling remains as Deputy Mayor.

Cllr Plancey said: "I will aim to do my absolute best to serve as Mayor for the duration of the term and hold this office

with the dignity and authority that Cynthia brought to the role."

For the rest of his term, Cllr Plancey will be supporting the mental health charity Mind, as well as Camp Simcha which supports Jewish families living with serious childhood illness across the UK.

> A tribute fund set up in Cllr Barker's name for her chosen charity, the NSPCC, has raised more than £1000.



Pictured: Mayor Cllr Alan Plancey

Are you ready?

On 1 January 2021, the UK will have left the EU and new rules on trade, travel and business will apply. Make sure you're ready.

See www.gov.uk/transition for more information.



HM Government
UK TRANSITION

**UK'S NEW START
LET'S GET GOING**

Sign up now on gov.uk/transition

- Check
- Change
- Go

Welcome



Welcome to the Winter edition of Hertsmer News. It is great to see Edie's fabulous artwork on the front page bringing some much-needed festive cheer at the end of a really challenging year for us all.

I would like to say a sincere thank you to everyone across the borough, including our own council staff, who have worked so hard in recent months to try to keep everyone safe as efforts continued to bring the coronavirus pandemic under control. I know that dealing with the various local or national restrictions has been very testing. Let's hope that things start to take a much more positive turn as we round off the year and move into 2021.



You can find updates on our coronavirus response, the support available and some adjustments that we have made to our services on pages 4 and 5.

With all the added financial stresses on families at the moment, we have also moved swiftly in Hertsmer to put a plan in place to ensure that every child in the borough who needs a hot meal during the Christmas school holidays will be able to get one for free. I'm very grateful to the GMSP Foundation and Akshaya Patra for their very generous and proactive

offers of support in looking after the borough's children by cooking hot, nutritious meals from their kitchens in Watford. I visited the kitchens recently with our Managing Director, Sajida Bijle (pictured) and was extremely impressed with their facilities. As Hertsmer News goes to press, council staff

are working on the logistics around collection and delivery and details will be widely publicised.

On page 6, you can read more about exciting expansion plans at Elstree Studios which will bring a jobs boost to the area. And on the back page please see our useful guide to seasonal waste and recycling

May I wish you a safe and healthy festive season and send you every good wish for 2021.

Councillor Morris Bright MBE
Leader of Hertsmer
Borough Council
leader@hertsmere.gov.uk

This magazine is produced by Hertsmer Borough Council three times a year.

Each edition costs around 29p per copy to design, print and deliver.

On the cover:

Edie Cogger's design was selected as the winner for our corporate seasonal card



Contents

- 4 Coronavirus update
Financial help
- 5 Keeping healthy
Parking payments
- 6 Jobs boost for the borough
Award-winning parks
- 7 Meet your councillors
- 8 Seasonal recycling

Contact us

-  www.hertsmere.gov.uk
-  customer.services@hertsmere.gov.uk
-  @HertsmerBC
-  www.facebook.com/hertsmere
-  020 8207 2277
-  hertsmerebc

Visiting us



Reception open for pre-booked appointments

Call 020 8207 2277 for information and to make an appointment

Hertsmer Borough Council's Civic Offices, Elstree Way, Borehamwood, WD6 1WA is currently open by appointment only. Our area offices in Bushey and Potters Bar remain closed at this time as a health protection measure. We will keep you updated on any changes.

www.hertsmere.gov.uk/contactus

If you would like this magazine in a different format please call 020 8207 7445.

Coronavirus response continues

The council-wide efforts to support residents and businesses, as well as promote public health and social distancing measures, have remained in full swing during recent months.

For the second England-wide lockdown in November, the vast majority of our services were maintained with a substantial number of our staff continuing to work from home effectively.

Services and support have been kept constantly under review to ensure we have reacted promptly and appropriately as and when restriction levels have changed.

Our decision-making meetings such as Full Council and Executive are still being conducted online, ensuring that all the key council business can continue to be debated.





> For further information about our services, guidelines about restrictions on businesses and for a whole host of other information, visit www.hertsmere.gov.uk/coronavirus

> For details of financial support to businesses during the pandemic, visit www.hertsmere.gov.uk/businesssupport



Financial support if you need to self-isolate

To be eligible for the Test and Trace Support Payment you must be:

-  Told by NHS Test and Trace that you are required to self-isolate
-  Employed or self-employed
-  Unable to work from home and will lose income as a result
-  Currently receiving Universal Credit, Working Tax Credit, Income-based Employment and Support Allowance, Income Support, Housing Benefit and/or Pension Credit.



To find out more visit: www.hertsmere.gov.uk/testandtracesupport

If you're on a low income or self-employed, financial help is available if you're asked to self-isolate by NHS Test and Trace or because you've been identified as a close contact of someone who has tested positive for Covid-19.

If you meet the criteria you are entitled to receive the Test and Trace Support Payment of £500 payable into your bank account.

The payments are only eligible until the scheme ends on 31 January 2021 and you can claim for each period of self-isolation.

> Find out more at: www.hertsmere.gov.uk/testandtracesupport

Democracy during a pandemic

Whilst we have been able to make adjustments to key council meetings during the coronavirus restrictions by holding them online, some aspects of the democratic processes have had to be adjusted across the country.

Since lockdown a number of parish and ward councillor positions have become vacant in Hertsmere.

In line with national guidance, all elections across the country have been put on hold until 6 May 2021.

Although the annual canvass has now closed,

you can register to vote at any time. The quickest and easiest way to register is online at www.gov.uk/register-to-vote.

> Find out more about the current councillor vacancies on our website: www.hertsmere.gov.uk/electionnotices





Keeping you moving



In these uncertain times and changeable weather, we're all looking for different ways to keep active and healthy.

Though indoor and outdoor leisure centres had to close again during the second lockdown, a range of initiatives remained available in the borough helping you to stay trim and boost morale.

As restrictions change, providers are constantly reviewing the activities available. Please keep an eye on the relevant websites for updates.

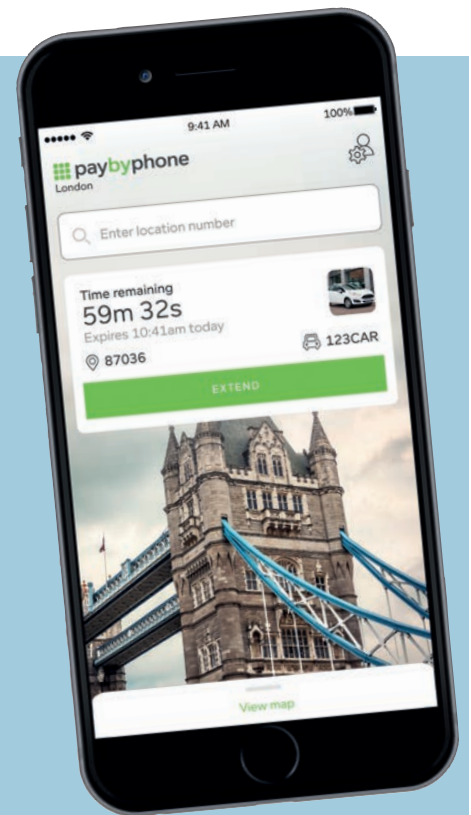
- **We Move, She Moves (WMSM)** – our award-winning activity programme for women and girls aged 13 or over in Hertsmere is offering a limited number of sessions from January, including Aqua Zumba, Stroller Strength, Yoga and Learn to Run (online). Pre-booking is essential. For updates go to the WMSM's website www.wemove.shemoves.me.uk and Facebook page www.facebook.com/wemoveshemoves

- **Healthy Hubs** – Hertsmere's new one-stop shops for all your health and wellbeing needs. The hubs provide free lifestyle support for individuals and their families covering mental health, physical activity, weight management, smoking cessation, health MOTs and nutritional advice. To find out more visit www.hertsmere.gov.uk/healthyhubs

- **Shape Up** – a free 12-week weight management course for men delivered by Watford FC's Community Sports and Education Trust will be running from next month. To find out more call **01923 496391** or email rhys.ratcliffe@watfordfc.com

- **Leisure Centres** – Please keep an eye on InspireAll's website www.inspireall.com and The Venue's, Bushey Grove's and FurzeField's Facebook and Instagram pages for news and updates about the borough's leisure centres and services on offer.

Pictured: Lee Bruce, our Health and Wellbeing Advocate



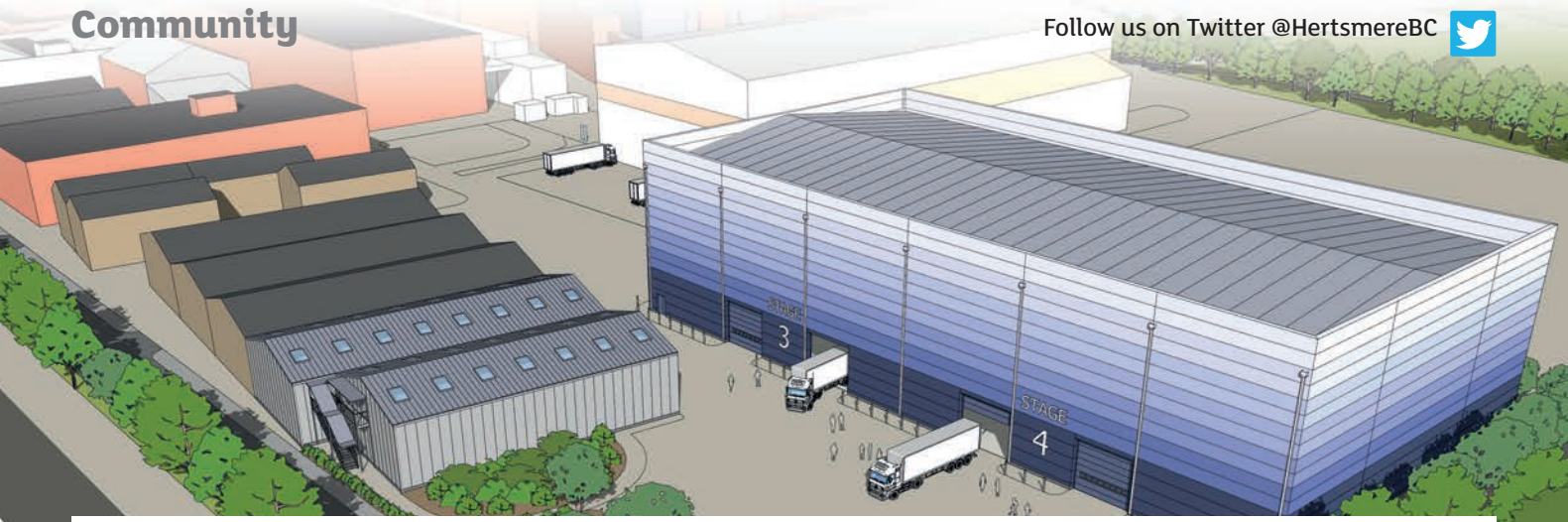
Making on-street parking easier and safer

All council car parks and on-street pay and display parking areas now have a new 'pay by phone' option, helping to support measures to limit the spread of Coronavirus and encourage visits to our towns and villages.

Pay-by-Phone is simple and easy to use. Visit www.paybyphone.co.uk, download the app from the app store or call **0203 362 1200**. Once you have registered and wish to pay you will need to provide:

- The location code which is shown on the pay and display machine
- Your vehicle details
- How long you will be staying for.

To find out more visit www.hertsmere.gov.uk/paybyphone



Jobs boost at Elstree Studios

Hertsmere’s reputation as the ‘British Hollywood’ will be further cemented with the expansion of Elstree Studios.

The scheme to build two new soundstages and ancillary workshops on the site of the former Big Brother house is going ahead after we secured a £6 million government funding deal. The deal, approved by Hertfordshire Local Enterprise Partnership (Herts LEP) on behalf of the government, means the

borough is in line for a post-lockdown jobs boost, with the creation of at least 800 jobs, plus apprenticeship opportunities for local school leavers and the unemployed.

A further £6 million of council funding for the project was approved in August. As part of the deal, it has been agreed

that £100,000 per year from rental income will be invested into local creative industries.

In addition, our councillors have backed a motion calling for the creation of a film and television heritage centre that will celebrate Hertsmere’s long-standing association with the industry.

Award-winning parks

Well done to our Parks team, our contractors John O’Conner and all our fantastic Park Friends Group for ensuring our parks remain award-winning and wonderful havens for much-needed fresh air and exercise for people of all ages.

To find out more about Hertsmere’s parks visit www.hertsmere.gov.uk/findapark

Green Flag award-winning parks



Discover our parks and open spaces at www.hertsmere.gov.uk/parks



Web update

Hertsmere.gov.uk is amongst the top local authority websites for accessibility in Hertfordshire.

The work is part of a wider improvement project, that has been developing the website’s content and navigation to ensure hertsmere.gov.uk meets the needs of all our customers.

Improvements include making our top 250 customer viewed PDFs accessible,

making tables responsive on all devices, ensuring the news carousel is accessible and available on mobile phones, rewording copy and improving layout design to ensure they are screen reader friendly.

We’ll keep you updated with how the project is progressing.

Meet your Councillors

You can contact your ward councillors at any reasonable time. Hertsmere has a Conservative majority, with 29 Conservative councillors, six Labour councillors, three Liberal Democrat councillors and one vacant seat. Your councillors are listed in alphabetical order by ward. If you don't know which ward you live in, please visit www.hertsmere.gov.uk/findmycllr or call 020 8207 2277.

Key	Aldenhams East		Aldenhams West		Borehamwood Brookmeadow			
(Con) = Conservative (Lab) = Labour (Lib Dem) = Liberal Democrat	 John Graham (Con) cllr.john.graham@hertsmere.gov.uk 07976 360961	 Lucy Selby (Con) cllr.lucy.selby@hertsmere.gov.uk 07973 710696	 Caroline Clapper (Con) cllr.caroline.clapper@hertsmere.gov.uk 07818 427745	 David Lambert (Con) cllr.david.lambert@hertsmere.gov.uk 07802 412714	 Glenn Briski (Con) cllr.glenn.briski@hertsmere.gov.uk 07771 688675	 Susan Brown (Con) cllr.susan.brown@hertsmere.gov.uk 07534 984703	 Rabbi Alan Plancey (Con) cllr.alan.plancey@hertsmere.gov.uk 020 8207 3759	
	Bentley Heath and The Roysds		Borehamwood Cowley Hill		Borehamwood Hillside			
	 Sarah Hodgson-Jones (Con) cllr.sarah.hodgson-jones@hertsmere.gov.uk 07817 890541	 Michael Reeve (Con) cllr.mike.reeve@hertsmere.gov.uk 07960 056749	 Richard Butler (Lab) cllr.richard.butler@hertsmere.gov.uk 07706 079439	 Jeremy Newmark (Lab) - Group Leader cllr.jeremy.newmark@hertsmere.gov.uk 020 3637 9930	 Michelle Vince (Lab) cllr.michelle.vince@hertsmere.gov.uk 07549 130736	 Victor Eni (Con) cllr.victor.eni@hertsmere.gov.uk 07884 056187	 Meenal Sachdev (Con) cllr.meenal.sachdev@hertsmere.gov.uk 07973 401522	 Farida Turner (Con) cllr.farida.turner@hertsmere.gov.uk 020 8953 4347
	Borehamwood Kenilworth		Bushey Heath		Bushey North			
VACANT SEAT	 Rebecca Challice (Lab) cllr.rebecca.challice@hertsmere.gov.uk 07929 661391	 Brett Rosehill (Con) cllr.brett.rosehill@hertsmere.gov.uk 07876 714422	 Paul Morris OBE (Con) cllr.paul.morris@hertsmere.gov.uk 07813 918881	 Seamus Quilty (Con) cllr.seamus.quilty@hertsmere.gov.uk 07595 372750	 Jerry Evans (Lib Dem) - Group Leader cllr.jerry.evans@hertsmere.gov.uk 07774 714625	 Andrew Melville (Lib Dem) cllr.andrew.melville@hertsmere.gov.uk 07391 194895	 Paul Richards (Lib Dem) cllr.paul.richards@hertsmere.gov.uk 07838 786057	
	Bushey Park North		Bushey St James			Elstree		
	 David Carter (Con) cllr.david.carter@hertsmere.gov.uk 07715 221714	 Linda Silver (Con) cllr.linda.silver@hertsmere.gov.uk 020 8950 1431	 Anne Swerling (Con) cllr.anne.swerling@hertsmere.gov.uk 07814 241718	 Pervez Choudhury (Con) cllr.pervez.choudhury@hertsmere.gov.uk 07719 788185	 Harry Mortimer (Con) cllr.harry.mortimer@hertsmere.gov.uk 07939 145577	 Pete Rutledge (Con) cllr.pete.rutledge@hertsmere.gov.uk 01923 449950	 Morris Bright MBE (Con) - Leader of the Council leader@hertsmere.gov.uk 020 8207 7570	 Dr Harvey Cohen (Con) cllr.harvey.cohen@hertsmere.gov.uk 07974 910215
	Potters Bar Furzefield		Potters Bar Oakmere		Potters Bar Parkfield		Shenley	
	 Christian Gray (Lab) cllr.christian.gray@hertsmere.gov.uk 07535 925297	 Christopher Myers (Lab) cllr.chris.myers@hertsmere.gov.uk 07734 699706	 Jean Heywood (Con) cllr.jean.heywood@hertsmere.gov.uk 07793 868645	 Ruth Lyon (Con) cllr.ruth.lyon@hertsmere.gov.uk 01707 644302	 Paul Hodgson-Jones (Con) cllr.paul.hodgson-jones@hertsmere.gov.uk 07716 832365	 Abhishek Sachdev (Con) cllr.abhishek.sachdev@hertsmere.gov.uk 07712 837990	 Anthony Spencer (Con) cllr.anthony.spencer@hertsmere.gov.uk 07973 349083	 Natalie Susman (Con) cllr.natalie.susman@hertsmere.gov.uk 07939 208447

Seasonal waste and recycling

During the festive season around 30 per cent more rubbish is produced, so please remember to reduce, reuse and recycle.

Your kerbside waste and recycling collections change over the holiday period. You will receive further information about these changes by a card left on your black bin w/c 14 December. Alternatively you can visit our webpage for details: www.hertsmere.gov.uk/xmaswaste. In the meantime why not cut out and keep our handy collection calendar for next year.



Collection calendar 2021

January 2021							
	M	T	W	TH	F	S	SU
W1					1	2	3
W2	4	5	6	7	8	9	10
W1	11	12	13	14	15	16	17
W2	18	19	20	21	22	23	24
W1	25	26	27	28	29	30	31
February 2021							
	M	T	W	TH	F	S	SU
W2	1	2	3	4	5	6	7
W1	8	9	10	11	12	13	14
W2	15	16	17	18	19	20	21
W1	22	23	24	25	26	27	28
March 2021							
	M	T	W	TH	F	S	SU
W2	1	2	3	4	5	6	7
W1	8	9	10	11	12	13	14
W2	15	16	17	18	19	20	21
W1	22	23	24	25	26	27	28
W2	29	30	31				

April 2021							
	M	T	W	TH	F	S	SU
W2				1	2	3	4
W1	5	6	7	8	9	10	11
W2	12	13	14	15	16	17	18
W1	19	20	21	22	23	24	25
W2	26	27	28	29	30		
May 2021							
	M	T	W	TH	F	S	SU
W2						1	2
W1	3	4	5	6	7	8	9
W2	10	11	12	13	14	15	16
W1	17	18	19	20	21	22	23
W2	24	25	26	27	28	29	30
W1	31						
June 2021							
	M	T	W	TH	F	S	SU
W1		1	2	3	4	5	6
W2	7	8	9	10	11	12	13
W1	14	15	16	17	18	19	20
W2	21	22	23	24	25	26	27
W1	28	29	30				

Week 1 (W1)

Black bin: Anything that cannot be recycled.

Week 2 (W2)

Green bin: Food and garden waste.

Brown bin: Glass, cartons, plastics, cans, cardboard and paper.



Public holidays All collections in a week following a public holiday will take place a day later. For example, a Monday collection will take place on Tuesday and a Friday collection will take place on Saturday, unless you are notified otherwise. Collection calendars are also available on our website at www.hertsmere.gov.uk/collectioncalendar

Just about everything can be recycled at home but other items, such as clothes, electrical items and batteries, can be recycled at local recycling banks and/or your local tip also known as a Household Waste Recycling Centre.

For more information and details of new opening times please visit www.wasteaware.org.uk



www.hertsmere.gov.uk/recycling

WHERE TO PUT YOUR ITEMS FOR RECYCLING



BROWN BIN

- Advent calendar – plastic insert and cardboard outer (separated)
- Greetings cards – plain only (no glitter or foil)
- Brown packing paper (e.g. Amazon deliveries)
- Cardboard boxes
- Cartons
- Foil and foil containers (must be clean)
- Sweet/biscuit tins



GREEN BIN

- Christmas trees (real)
- Flowers
- Food
- Holly and mistletoe



BLACK BIN

- Baubles
- Christmas trees (fake)
- Crackers
- Glassware (e.g. drinking glasses, bowls)
- Napkins
- Polystyrene
- Ribbon
- Tinsel
- Toys
- Wrapping paper

RECYCLING CENTRES

For batteries, electrical items, fairy lights, toys and extra rubbish and recycling.

A full A-Z of recycling is available at www.hertsmere.gov.uk/recycling