

# Hertsmere News



Hertsmere Borough Council's magazine  
Winter 2023



**INSIDE:** Simpler recycling  
in Hertsmere coming soon!



## Community

# Seasonal cards spreading cheer in Hertsmere

**Children from primary schools across the borough have been spreading seasonal cheer with their festive designs.**

More than 80 entries for our 2023 seasonal card competition were received by primary school pupils and five talented young artists were chosen to receive prizes and attend a prize-giving presentation with the Mayor of Hertsmere, Councillor Chris Myers, on Thursday 23 November.

Eight-year-old Tihanna Sandi and seven-year-old Wren Gray, both from Ladbroke JMI School, have been named overall winners of this year's contest.

Wren's creative and detailed cartoon style design featuring Santa and his reindeer Rudolph, has been selected as our corporate e-card. Tihanna's colourful design featuring 'Merry Christmas' surrounded by festive figures has been selected as the Mayor of Hertsmere's card.

Three runners-up were also announced. Raphael Shtrosberg, age nine, Borehamwood resident attending Knightsfield School; Zianna Kenworthy, age five, from Aldenham Prep School and Max Stephenson-Ifield, age seven, from St John's Infant School.

They all received a certificate, gift voucher, and a pack of their own cards to give to friends and family.

Most of the entries will be available to view on the front window of our Civic Offices throughout December to spread seasonal cheer to the community.

The cover of this edition of Hertsmere News shows the Mayor and his consort with the winners and their designs.



## Keeping Hollywood in Borehamwood as town's cinema saved

As Hertsmere News went to press we were announcing a decisive move to secure the immediate future of REEL Cinema at Borehamwood's The Point which had been threatened with closure.

Working with Elstree and Borehamwood Town Council and REEL Cinema, we've developed a solution that will keep the cinema

open and save jobs which had been at risk of redundancy.

Plans are already being worked up to improve the offering at The Point, a site which we own and lease out long-term to a property fund. In addition, we will work with REEL Cinema to seek to establish an improved cinema offer for the town for the future.



# Welcome

## Welcome to the winter edition of Hertsmere News.



Christmas and Chanukah are now upon us, following on from the colourful and inspiring Diwali celebrations the borough enjoyed in November, and the New Year is just around the corner. It's a great time to reflect on a particularly active few months, as well as taking the opportunity to admire the festive artwork of some of our talented youngsters.

In this edition we include lots of news about some key decisions we've taken and updates from across our council services.

We have a highly-diverse population here in Hertsmere. We are home to one of the largest Jewish communities in the UK, as well as a rapidly growing Muslim community. The appalling events in Israel and Gaza following the shocking terror attacks of October 7th have caused pain and wide-ranging concerns for so many of us. I'm very proud of our response in working so hard to support cohesion in our local communities, with tremendous co-operation from faith and community leaders with

whom we remain actively engaged (pictured, below).

We set out in our centre pages our ambitious new kerbside collection plans designed to increase our recycling rates and improve our environment. We cover the key changes that we'll be introducing over the next 18 months. These changes will also ensure we meet new government guidelines about to be introduced.

We also update you on the next steps for the borough's Local Plan to meet housing, employment and investment targets up to 2040.

I hope you find this edition an informative and enjoyable read and may I take this opportunity to wish you and your loved ones a peaceful festive season, a Merry Christmas and a happy, healthy and prosperous 2024.

**Councillor Jeremy Newmark**  
**Leader of Hertsmere**  
**Borough Council**  
[leader@hertsmere.gov.uk](mailto:leader@hertsmere.gov.uk)

Below: Faith and community leaders meet at the Civic Offices



## In this issue

## Contents

- 4 Local Plan update
- 6 Wellbeing this winter
- 7 Ambitious recycling plans
- 11 Q&A with Taiwo Kaffo
- 12 Parks update
- 13 Stay safe
- 15 Meet your councillors

This magazine is produced by Hertsmere Borough Council three times a year.

Each edition costs around 29p per copy to design, print and deliver.



## Opening hours

Reception is open 9am – 5.15pm  
 Mon to Thur and 9am – 5pm Fri.

[hertsmere.gov.uk/contactus](https://hertsmere.gov.uk/contactus)

## Christmas Opening Hours 2023

FRI 22 DEC	9 AM - 2 PM
MON 25 DEC	CLOSED
TUES 26 DEC	CLOSED
WED 27 DEC	9 AM - 5.15 PM
THUR 28 DEC	9 AM - 5.15 PM
FRI 29 DEC	9 AM - 2 PM
MON 1 JAN	CLOSED
TUES 2 JAN	9 AM - 5.15 PM



If you would like this magazine in a different format please call  
**020 8207 7445**



@HertsmereBoroughCouncil

[hertsmere.gov.uk](https://hertsmere.gov.uk) | Hertsmere News | Winter 2023 | 3



## News



## 84B bus route

**A critical bus link between Potters Bar and Barnet was restored in September following our decision to allocate developer funding to this route.**

The 84B bus route has restored direct access to and from Potters Bar train station and Barnet Hospital, six days per week. It provides an invaluable link for hospital users and visitors, schoolchildren, local businesses and residents. Having identified this route as a key piece of infrastructure needing support, Community Infrastructure Levy (CIL) funds, totalling £183,600, is being provided by us for an initial period of 12 months. Further funding streams are being explored with other partner authorities and agencies, with the ultimate aim that the route should be self-sustaining.

The Mayor of Hertsmeire, Cllr Chris Myers, led the celebrations

at the train station by cutting both a specially-decorated cake and a ribbon to mark the start of the service, whilst refreshments were served to all.

> The route is operated by Central Connect, part of the Vectare group, and details of the route and timetable can be found by visiting [intalink.org.uk/services](https://intalink.org.uk/services)

> You can watch a video hearing from the Leader of the Council at the launch of the new 84B bus route by scanning the QR code.



## Chance to have your say on your Local Plan

**You can have your say on the future of Hertsmeire in spring 2024, after our elected members agreed a framework for the borough's new Local Plan.**

At a Full Council meeting in November, our councillors agreed a comprehensive report which sets out a proposed new approach and updated timetable in the form of a Local Development Scheme for the Local Plan which, once it has been considered by a government-appointed independent Inspector at a public examination, will become a blueprint for how land in the borough is used and developed until 2040.

This Local Plan framework is a fundamental commitment of the new partnership administration and, prior to Full Council, was approved at a Cabinet meeting, with the Local Development Scheme committing to a public consultation in spring next year.

The consultation will ask for your views on policies and sites for housing and employment which could be included in the final version of our new Local Plan.

In 2021, we received nearly 18,000 responses in a Local Plan consultation which was held during the previous administration.

Please keep an eye on our channels, including the website and on social media, for more information about the upcoming consultation.

> For more information visit [hertsmeire.gov.uk/newlocalplan](https://hertsmeire.gov.uk/newlocalplan)





## Refund for most vulnerable households

**Around 1,800 Hertsmere householders have claimed a refund on this year's increase of our share of the council tax liability.**


The refund scheme enabled residents to opt in for a credit against their 2023/24 council tax liability, with any unclaimed refunds being set aside to support the borough's most vulnerable households, through the Council Tax Support Scheme and other charitable causes.

Our share of the council tax bill for this financial year equated to an increase of between £5.32 to £5.82 for a band D property, which is

10 per cent of the overall council tax payment residents make.

We are now administering the refunds, with claimants due to receive their monies by 31 December.

The remaining funds will be allocated to our Council Tax Support Scheme, for households on low incomes.

 For further information about the scheme, visit [hertsmere.gov.uk/counciltaxsupport](https://hertsmere.gov.uk/counciltaxsupport)

## News



## What do you think?

**We would value your thoughts and contributions on how we, as a council, communicate and engage with you. We're keen to understand how you currently receive our news and what other methods could be beneficial to you.**

Your perspective is invaluable to strengthen our commitment to keep Hertsmere an engaged, informed and connected community.

This is the first survey using our new digital consultation platform – Zencity – which aims to ensure our policies and decisions are resident-led, ensuring our communities feel empowered to have their say in shaping the future of Hertsmere.

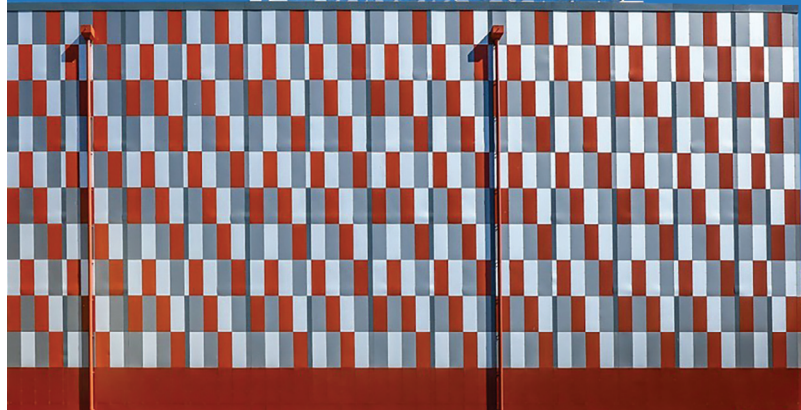
We look forward to hearing your views!

To take part in the survey, scan the QR code or visit [hertsmere.civilspace.io/en/projects/your-views-on-our-communications-and-engagement-products](https://hertsmere.civilspace.io/en/projects/your-views-on-our-communications-and-engagement-products)



## Building Project of the Year

PLATINUM STAGES



**The new Platinum Stages at Elstree Studios have been recognised for three regional awards for building excellence.**

The state-of-the-art soundstages have been named Building Project of the Year initially winning the Herts & Beds and then the East of England by Constructing Excellence. Recently it also won the Best Non-residential New Build Central Region by Local Authority Building Control (LABC). They now go on to the national finals of both competitions.

Clad in innovative timber cassettes, the new stages have been designed to meet international space standards in studio design and can be used as two separate stages or a combined super-sized one.

Stage three is the first stage in the country to achieve an acoustic rating of 70 decibels, which safeguards occupiers from environmental disturbances. Two stages also boast an innovative dividing wall solution, providing a significant cost savings and no programme delay.



@HertsmereBoroughCouncil

[hertsmere.gov.uk](https://hertsmere.gov.uk) | Hertsmere News | Winter 2023 | 5



## Health and Fitness

# Nurture your Wellbeing this winter

Hertsmere offers plenty of opportunities for the whole community to exercise and keep healthy. Take your pick from some of our excellent groups.



## This Girl Can in Oakmere!

An exciting programme of new exercise classes has started in Oakmere, with discounted prices for local residents.

This Girl Can is a programme for women and girls over the age of 16 to get active.

Classes include yoga and Zumba to start with but more classes will be added, such as learn to run, Stroller Strength and Tai Chi. For more information and to book sessions, visit [wemoveshemoves.me.uk](http://wemoveshemoves.me.uk) or email [community.services@hertsmere.gov.uk](mailto:community.services@hertsmere.gov.uk)

## InspireAll

All three leisure centres in the borough will be open over the Christmas period and have a great range of activities available including gym, swimming, classes, indoor and outdoor sports and lots of children's activities. They have fantastic soft play and climb facilities at Furzefield for your little ones. Make sure to visit the centre websites and social media channels for more information.

## Healthy Hubs

Our four Healthy Hubs across Hertsmere provide free lifestyle support covering mental health, physical activity, weight management, smoking cessation, health

MOTs, nutritional advice and sexual health testing kits.

[hertsmere.gov.uk/healthyhubs](http://hertsmere.gov.uk/healthyhubs)

## Community spaces

Community spaces are for people to gather in a safe and welcoming place to enjoy some company, a hot drink and activities over the winter months. There is a network of community spaces across the borough.

[hertsmere.gov.uk/warmspaces](http://hertsmere.gov.uk/warmspaces)



## Connect and Engage with Communities 1st

Join Communities 1st for an array of engaging activities and opportunities to socialise at community spaces across Hertsmere, where everyone is welcome. Discover the joy of craft workshops, immerse yourself in board games, and enjoy beverages.

Supported by us, complimentary courses will be provided, covering a variety of topics to enhance practical skills, such as creative air fryer cooking, effective money

management strategies, and the art of upcycling. To register for a session, please visit [communities1st.org.uk/multiply](http://communities1st.org.uk/multiply)

They look forward to seeing you there and building a stronger, more connected community together.

  
**Communities 1st**  
Working with you to make a bigger difference





# Ambitious new kerbside collections

Help us to make a positive impact on the environment with our ambitious new plans to increase recycling rates, reduce avoidable waste and meet our environmental commitments. Together we can create a more sustainable future.

The government recently set out plans to make it easier for people to recycle, minimise waste and 'do their bit'. We're ahead of the curve in delivering these simpler recycling changes.

In April 2025, we will introduce weekly collections of food waste – one year ahead of government targets! To get the full details, head over to page 8 to find out more.

Spring is just around the corner and so is the start of our Garden Waste Collection Service. There's no legal requirement for local authorities to collect garden waste, but we know for some residents it's a helpful service and brings us in-line with other well performing councils.

You can start signing up in the New Year. If you subscribe now to receive our 'News for You' waste and recycling e-alerts at [hertsmere.gov.uk/contactus](https://hertsmere.gov.uk/contactus), we'll let you know when the form is ready to sign up.

Don't worry if you choose not to participate in the garden waste collection service, you can still take your garden waste to one of Hertfordshire County Council's recycling centres or why not try composting at home?



## Waste and Recycling

### Compost bin special offer!



We've teamed up with [getcomposting.com](https://getcomposting.com) to offer a subsidised rate on compost bins for Hertsmere residents.

Composting is one of the easiest and most affordable ways to reduce kitchen and garden waste. Reduce your landfill waste by transforming your leftovers into nutrient-rich compost that helps your plants grow and flourish.

You can take advantage of the offer at [getcomposting.com](https://getcomposting.com)

\*£6.99 delivery fee applicable.

## Garden waste collection FAQs

### Q Why are you now charging for garden waste collections?

A Unlike household waste and recycling, there's no legal requirement to collect garden waste and councils can charge a small fee for collections. A majority of all councils in England, and almost all in our county, charge for this service, to keep it sustainable and self-financing. Not all properties in Hertsmere require a garden waste collection service as they do not have a garden. Introducing a charge means that only households that choose to use the service will pay. This is similar to bulky waste collections where only households requesting the service have to pay.

### Q How much will the Garden Waste Collection Service cost?

A You can sign up to have your green bin collected fortnightly for just £50, which works out at less than £1 a week and less for residents on benefits who are eligible for the concessionary rate. The service will run on a yearly basis from April to March.

> Remember you could share this service with your neighbour. Read our FAQs to find out more: [hertsmere.gov.uk/gardenwaste](https://hertsmere.gov.uk/gardenwaste)





## Waste and Recycling

# Food waste

**Did you know that over a quarter of the black bin is food waste? That's a lot of food that could be recycled, but instead gets sent to landfill – at three times the cost!**

Food waste is also the biggest contaminant of our mixed recycling service.

By introducing a weekly food waste collection in April 2025 – one year ahead of government targets – we'll divert 3,000 tonnes of waste from landfill every year, as well as providing you with a cleaner and easier recycling service.

**> Find out more at:**  
**[hertsmeire.gov.uk/foodwaste](https://hertsmeire.gov.uk/foodwaste)**



## What can I do with my food waste?

If you are unable to recycle your food waste in a green bin then you can put it in your black bin. This is a temporary arrangement until separate food waste collections are introduced in 2025.

The average family throws away about £60 a month in food waste but you can take steps now to reduce that. We're supporting Waste Aware's 'Worth Saving' campaign, which provides tips and tricks to plan ahead, buy what you need, how to store food correctly and cook so nothing is wasted. Visit [wasteaware.org.uk/worthsaving](https://wasteaware.org.uk/worthsaving) to find out more.

## Can you start food waste collections now?

We are introducing weekly food waste collections in 2025. Our team is working hard to introduce the service as soon as we can, however the vehicles we need are made to order, which takes time. Once ordered they will take 12 months to arrive.

## What more can we do to increase recycling and tackle climate change?

These changes are just the start of an ambitious plan to improve recycling in Hertsmeire. We will be working with landlords to improve recycling in flats. We are offering subsidised composters to help people compost at home. We are also looking into other potential recycling streams.

You can help by thinking about what you put in your bin. Most waste can now be recycled. Use our simple A-Z if you are unsure where to put your waste.

**> Visit our website to find out more about recycling in our borough:**  
**[hertsmeire.gov.uk/recycling](https://hertsmeire.gov.uk/recycling)**  
Scan the QR code to find out more about the new Garden Waste Collection Service.



## Win a meal out and a day as a chef

To enter WasteAWARE's prize draw subscribe to a five-week e-newsletter, then complete the survey: [www.wasteaware.org.uk/WorthSaving](https://www.wasteaware.org.uk/WorthSaving)





# RECYCLING GUIDE



**On Week 1**  
we will collect  
one black bin



**On Week 2** we will collect  
your brown bin and if  
subscribed to the garden  
waste collection, your  
green bin(s)



**Recycling in flats:** Your collections may vary if you live in a property with communal bin stores. For more information please visit [www.hertsmere.gov.uk/recyclinginflats](http://www.hertsmere.gov.uk/recyclinginflats)



## Mixed recycling bin (brown bin)

Use this bin to recycle glass, cartons, plastic, cans, cardboard and paper.

If recycling bins contain the wrong items they will not be emptied. Please only put acceptable items in and **'if in doubt, leave it out!'**

### IMPORTANT Items must be:

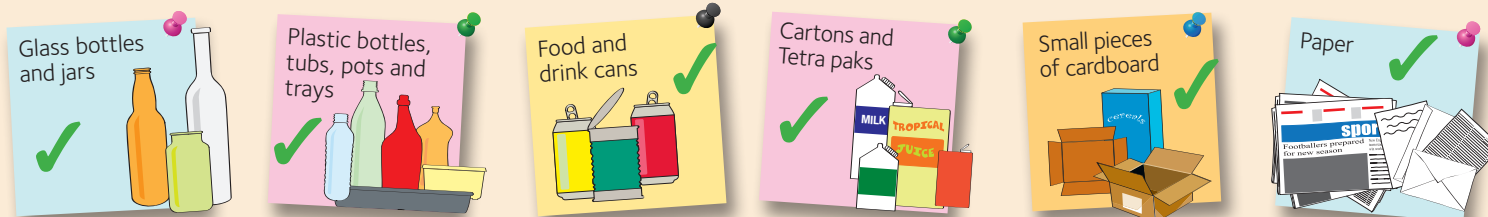
#### • Loose, not bagged

If you are using a bag to carry your recyclables to the bin please empty the items into the recycling bin first, then dispose of the bag in the general waste bin or reuse it.

#### • Clean and empty

Please rinse out any food residue. Pizza boxes, dirty foil and any other food containers with food stuck to them are not acceptable.

### YES PLEASE



### NO THANKS



## Green recycling bin

Use this bin to recycle all food and garden waste.

If recycling bins contain the wrong items they will not be emptied. Please only put acceptable items in and **'if in doubt, leave it out!'**

### YES PLEASE



### NO THANKS





# Collection calendar 2024

## January 2024

	M	T	W	TH	F	S	SU
W2	1	2	3	4	5	6	7
W1	8	9	10	11	12	13	14
W2	15	16	17	18	19	20	21
W1	22	23	24	25	26	27	28
W2	29	30	31				

## February 2024

	M	T	W	TH	F	S	SU
W2				1	2	3	4
W1	5	6	7	8	9	10	11
W2	12	13	14	15	16	17	18
W1	19	20	21	22	23	24	25
W2	26	27	28	29			

## March 2024

	M	T	W	TH	F	S	SU
W2					1	2	3
W1	4	5	6	7	8	9	10
W2	11	12	13	14	15	16	17
W1	18	19	20	21	22	23	24
W2	25	26	27	28	29	30	31

## April 2024

	M	T	W	TH	F	S	SU
W1	1	2	3	4	5	6	7
W2	8	9	10	11	12	13	14
W1	15	16	17	18	19	20	21
W2	22	23	24	25	26	27	28
W1	29	30					

## May 2024

	M	T	W	TH	F	S	SU
W1			1	2	3	4	5
W2	6	7	8	9	10	11	12
W1	13	14	15	16	17	18	19
W2	20	21	22	23	24	25	26
W1	27	28	29	30	31		

## June 2024

	M	T	W	TH	F	S	SU
W1						1	2
W2	3	4	5	6	7	8	9
W1	10	11	12	13	14	15	16
W2	17	18	19	20	21	22	23
W1	24	25	26	27	28	29	30

## July 2024

	M	T	W	TH	F	S	SU
W2	1	2	3	4	5	6	7
W1	8	9	10	11	12	13	14
W2	15	16	17	18	19	20	21
W1	22	23	24	25	26	27	28
W2	29	30	31				

## August 2024

	M	T	W	TH	F	S	SU
W2				1	2	3	4
W1	5	6	7	8	9	10	11
W2	12	13	14	15	16	17	18
W1	19	20	21	22	23	24	25
W2	26	27	28	29	30	31	

## September 2024

	M	T	W	TH	F	S	SU
W2							1
W1	2	3	4	5	6	7	8
W2	9	10	11	12	13	14	15
W1	16	17	18	19	20	21	22
W2	23	24	25	26	27	28	29
W1	30						

## October 2024

	M	T	W	TH	F	S	SU
W1		1	2	3	4	5	6
W2	7	8	9	10	11	12	13
W1	14	15	16	17	18	19	20
W2	21	22	23	24	25	26	27
W1	28	29	30	31			

## November 2024

	M	T	W	TH	F	S	SU
W1					1	2	3
W2	4	5	6	7	8	9	10
W1	11	12	13	14	15	16	17
W2	18	19	20	21	22	23	24
W1	25	26	27	28	29	30	

## December 2024

	M	T	W	TH	F	S	SU
W1							1
W2	2	3	4	5	6	7	8
W1	9	10	11	12	13	14	15
W2	16	17	18	19	20	21	22
W1	23	24	25	26	27	28	29
W2	30	31					

Week 1 (W1)  
Black bin

Week 2 (W2)  
Green bin / Brown bin



### Garden waste collection service

From 8 April 2024 your green bin will only be collected if you have paid for a garden waste collection.

Our single black bin policy means we will only empty one black bin from each household.  
Find out more at:  
[hertsmere.gov.uk/blackbin](https://www.hertsmere.gov.uk/blackbin)

**Public holidays** All collections in a week following a public holiday will take place a day later. For example, a Monday collection will take place on Tuesday and a Friday collection will take place on Saturday, unless you are notified otherwise. Collection calendars are also available on our website at [www.hertsmere.gov.uk/collectioncalendar](https://www.hertsmere.gov.uk/collectioncalendar)

 **recycle**  
for Hertsmere



[www.hertsmere.gov.uk/recycling](https://www.hertsmere.gov.uk/recycling)



## Meet the Team

### HOUSING INITIATIVES TEAM LEADER TAIWO KAFFO

# Q&A

For our latest Question Time, we spoke to our Housing Initiatives team leader, Taiwo Kaffo.



**Q Tell us about your role within the Housing Initiatives team?**

**A** My role involves leading on the delivery of our Private Rented Sector approach, known as Let with Hertsmere.

This involves leading on the development and implementation of key projects and initiatives to support the delivery of housing services. We manage the move on process from our supported housing scheme for individuals with complex needs into private or social housing.

We work with other teams within our Housing department to help residents who are threatened with homelessness as a result of rent increases. We provide support in sustaining their tenancy with budgeting advice. I also oversee accommodation offers and provide tenancy support to refugee households.

**Q What key project are you working on at the moment?**

**A** We are currently introducing Homefinder UK to applicants to whom we owe a homelessness duty. It's a national mobility scheme which brings social and private rented sector housing to applicants all in one portal.

It's open to homeless households, applicants living in temporary accommodation, private rented sector tenants, victims of domestic abuse, gang violence and overcrowded families who are willing to move nationwide or at least 100 miles outside their area.

**Q And how does this impact the associated community?**

**A** There has been a sharp rise in applications due to families being threatened with homelessness as landlords are increasing rent within the private sector.

There's also a limited supply of properties within the borough, resulting in a high demand for temporary accommodation.

The introduction of Homefinders UK is a unique opportunity to reduce the number of households in temporary accommodation and prevent homelessness. Eligible applicants are also able to bid for available properties in more affordable areas nationwide.

**Q What is the biggest challenge your department is currently facing?**

**A** The Local Housing Allowance rate in Hertsmere is low compared to the high rent level. This has made it difficult to procure properties within the borough to help with duty of homelessness care in the private sector.

There is a planned increase scheduled for April 2024.

**Q What opportunities are currently presented within the housing initiatives team, to make a positive difference?**

**A** Our empty homes scheme has presented us with a unique opportunity to showcase our Let with Hertsmere schemes to landlords of empty properties, whilst increasing the local supply of housing.

We take pride in our affordability assessment which is carried out before rehousing homeless applicants. It provides an opportunity to also offer budgeting advice to households trying to sustain their tenancy.

**Q Tell us something about yourself that others may not know.**

**A** I support Chelsea football club and I am a twin.





## Environment

# Parks update



### Memorial clean up

We cleaned our two war memorials, one in School Lane in Bushey and the other next to Oakmere Park in Potters Bar in time for Remembrance Sunday in November.

### Angel tree

An 'Angel' tree has been planted in Kenilworth Park in Borehamwood dedicated to children and babies who have passed away.

The tree and plaque were unveiled in October by the Mayor of Hertsmere, Cllr Chris Myers, alongside local councillors and residents.

The evergreen tree, which symbolises eternal love and memory, will provide a place of solace and reflection for local families.

### Anyone for tennis?

Did you know we have refurbished tennis courts in King George Recreation Ground in Bushey and Borehamwood's Meadow Park?

In just six months, the courts have been booked almost five thousand times, which is about 15 bookings a day!

### Open space in Bushey

The open space at the former Bushey Country Club is now accessible to the public.

> To find out more about sports pitches and courts in the borough, as well as information on how to hire one, please visit: [hertsmere.gov.uk/PitchesToHire](https://hertsmere.gov.uk/PitchesToHire)



## Are you worried about paying your energy bills?

We're encouraging residents with off-grid heating systems who are most likely to be impacted by high energy bills to check if they're eligible for a new grant scheme to fund energy-saving home upgrades.

This could help you to use less energy, reduce your carbon footprint and spend less on your energy bills.

The Home Upgrade Phase 2 (HUG2) is open to home-owners and private tenants in:

- Homes not heated by mains gas, which includes oil, coal, LPG or only electric heating.
- Households with a combined annual income of less than £31,000 OR receiving certain income-related means-tested benefits, such as Universal Credit or living in an Index of Multiple Deprivation (IMD) area.
- Hard to heat homes based on your home Energy Performance Certificate (EPC). You will be helped with this part of the assessment and receive a free EPC assessment if you do not have one already.

HUG2 funding is open to private tenants, landlords and home-owners and available until March 2025.

> Apply at [hugapply.co.uk](https://hugapply.co.uk) by scanning the QR code or by calling the Energy Saving Trust on 0808 1968255.



## Making everyday journeys more sustainable

We're hoping to make it easier for you to walk, wheel or cycle in Hertsmere.

Our aim is to identify important local routes for people walking, using a wheelchair or riding a bike to go to work, school or carrying out other everyday trips in the borough – and we need your help.

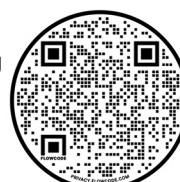
We would like you to tell us the routes that are important to you, as well as what barriers you face walking or cycling in the four main study areas in Hertsmere:

- Borehamwood and Elstree
- Potters Bar and South Mimms
- Radlett, Shenley and Aldenham
- Bushey

Your feedback will help us identify these important local routes and suggest ways to improve them, making them safer for you.

The Local Cycling and Walking Infrastructure Plan (LCWIP) is being developed in partnership with Hertfordshire County Council.

> Sign up to register your interest in being involved by scanning the QR code or going to [hertsmere.gov.uk/LCWIP](https://hertsmere.gov.uk/LCWIP)





## Community Safety Partnership



**Hertsmere Community Safety Partnership (CSP) brings a range of organisations together to ensure a joined-up and strategic approach to tackling crime and disorder issues in the borough.**

# Prevent burglaries this winter

**Sadly, as the nights draw in, burglars often take advantage of unlit homes. You can help protect your property by taking some simple steps.**

Securely lock all windows and doors, including double locking PVCu doors, keep valuable items such as handbags and keys out of sight and give your home a 'lived-in' look by using timer switches to turn on lights.

You may want to consider installing CCTV and doorbell cameras as an extra deterrent.

Sign up to OWL to receive free alerts about crime and policing events in your local area, as well as crime prevention advice. Visit [owl.co.uk/herts](http://owl.co.uk/herts) or download the app from your app store.

If you witness any suspicious activity in progress, please dial 999 straight away.

# Avoid scams at Christmas

Advice from Hertfordshire's Trading Standards suggest fraudsters are increasingly targeting people in the lead up to Christmas. It's important to recognise a scam and how to report anything you think is suspicious.

If a deal looks too good to be true, it probably is. Research before you buy to confirm authenticity by checking reviews and T&C's. Scammers may ask you to pay in an unusual way or quickly through a transfer service. When making large payment amount, use a credit card to give you extra protection.

Report fraud immediately to your bank and to the police.

**>** To report scams to the police, contact them via Action Fraud on **0300 123 2040** or go to [actionfraud.police.uk](http://actionfraud.police.uk)

For advice and to get support from Trading Standards for a victim of fraud, call the Citizens Advice Consumer helpline on **0808 223 1133**.

Report scam texts and phone calls for free to **7726**.



 **Herts Domestic Abuse Helpline**

**08 088 088 088**

# Here for you this Christmas

For most people, Christmas and New Year is a time of joy and fun.

Unfortunately, this is not the case for everyone. Increased stress and financial pressures, excess alcohol, family arguments and being forced to spend time with people we may not choose to be with, can all translate into an increased risk of domestic abuse.

Herts Domestic Abuse Helpline is here for you. They offer FREE and

confidential support and signposting to anyone affected. The Helpline is open over the holiday period and they have a confidential email service, if calling is not an option.

**> Call 08 088 088 088**  
Monday to Friday:  
9am to 9pm  
Weekends: 9am to 4pm  
Confidential email:  
[kim@mailpurple.org](mailto:kim@mailpurple.org)



@HertsmereBoroughCouncil

[hertsmere.gov.uk](http://hertsmere.gov.uk) | Hertsmere News | Winter 2023 | 13

## Help and Advice

# An update from our elections team



### Polling District Review

Thank you to everyone who took part in our Polling District Review. Final recommendations will be considered in January 2024 and any changes will take effect from 1 February 2024. We'll keep you updated.

### Annual Canvass

The annual canvass has ended, but if you missed the deadline, it's not too late to tell us if there have been any changes to your household. You can do this by contacting Electoral Services on **020 8207 7481** or email [elections@hertsmerere.gov.uk](mailto:elections@hertsmerere.gov.uk).

It's particularly important to update your details if you move house, change your name or have just turned 16.

If your name was added to the household during canvass you now need to register if you haven't already. You can register to vote online at [gov.uk/register-to-vote](http://gov.uk/register-to-vote), you need just five minutes and your National Insurance number.

### Changes to voting by post and proxy

If you know that you won't be able to get to the polling station on Election Day, you can vote by post or ask someone you trust to cast your vote for you.

You can now apply online to vote by post and for some types of proxy vote. You just need your National Insurance number to prove your identity when applying.

There are limits to how many people a voter can act as a proxy for. This means you can only act as a proxy for two

people living in the UK. If you act as a proxy for people living overseas, you can act for up to four people but only two of these can be based in the UK.

These changes apply to UK Parliament elections, including by-elections and recall petitions, local elections and Police and Crime Commissioner elections.

> For more information visit [hertsmerere.gov.uk/waystovote](http://hertsmerere.gov.uk/waystovote)

## GREEN HOME GUIDE

Did you know that homes are responsible for a whopping 48% of carbon emissions from the built environment?

Without taking action, our homes will keep saying goodbye to precious (and increasingly pricey) heat as it escapes through uninsulated walls, roofs, and doors.

Hertfordshire Building Control is looking at a more sustainable future with their free handbook **The Green Home Guide**.

Whether it's a new house or improving an existing property, the guide outlines the key sustainability features and improvements that will make a home more affordable and comfortable over its life span.

The guide also provides insights into the submission of applications, finding expert advice, and navigating building regulations.

> View or download your free copy.



## In the dog house?

**Pets are a member of the family, so make sure they are well cared for if you have to leave them.**

Anyone who operates a business of looking after someone else's dog within their own home or property needs to be licensed under the Animal Welfare (Licensable activities) Regulations 2018.

Licences are only granted to businesses that meet set conditions that ensure the welfare of all dogs are met and the operators have appropriate knowledge/training. All operators must have a contract with a local vet to ensure the animals will receive medical attention, if needed and appropriate insurance.

Unlicensed home boarders put your pet at risk. They will not have been checked by the council or adhering to strict standards of care. Even if the operator has liability insurance, this may be invalidated by them not holding a licence.

> Before you leave your pet, please check the business is registered at: [hertsmerere.gov.uk/AnimalBusinesses](http://hertsmerere.gov.uk/AnimalBusinesses) or contact:

[animal.licensing@hertsmerere.gov.uk](mailto:animal.licensing@hertsmerere.gov.uk)

If you want to run a home boarding business, please contact the council.





## Your councillors

# Meet your Councillors

You can contact your ward councillor at any reasonable time.  
Your councillors are listed in alphabetical order by ward.  
If you don't know which ward you live in, please visit  
[hertsmeire.gov.uk/findmycllr](https://hertsmeire.gov.uk/findmycllr) or call 020 8207 2277

### KEY

**(Con)** =  
Conservative

**(Lab & Co-op)** =  
Labour and  
Co-operative

**(Lib Dem)** =  
Liberal  
Democrats

### Aldenham East



**Brett Rosehill**  
(Con)

cllr.brett.rosehill  
@hertsmeire.gov.uk  
07876 714 422



**Lucy Selby**  
(Con)

cllr.lucy.selby  
@hertsmeire.gov.uk  
07973 710 696

### Aldenham West



**Caroline Clapper**  
(Con)

cllr.caroline.clapper  
@hertsmeire.gov.uk  
07818 427 745



**David Lambert**  
(Con)

cllr.david.lambert  
@hertsmeire.gov.uk  
07802 412 714

### Borehamwood Brookmeadow



**Graeme Alexander**  
(Lab & Co-op)

cllr.graeme.alexander  
@hertsmeire.gov.uk  
07906 563 683



**Rebecca Challice**  
(Lab & Co-op)

cllr.rebecca.challice  
@hertsmeire.gov.uk  
07929 661 391



**Alan Plancey MBE**  
(Con)

cllr.alan.plancey  
@hertsmeire.gov.uk  
020 8207 3759

### Bentley Heath and The Royds



**Helen Green**  
(Lab & Co-op)

cllr.helen.green  
@hertsmeire.gov.uk  
07724 068 262



**Meenal Sachdev**  
(Con)

cllr.Meenal.Sachdev  
@hertsmeire.gov.uk  
07973 401 522

### Borehamwood Cowley Hill



**Richard Butler**  
(Lab & Co-op)

cllr.richard.butler  
@hertsmeire.gov.uk  
07706 079 439



**Jeremy Newmark**  
(Lab & Co-op) -  
Council Leader

cllr.jeremy.newmark  
@hertsmeire.gov.uk  
020 7112 7512



**Linda Smith**  
(Lab & Co-op)

cllr.linda.smith  
@hertsmeire.gov.uk

### Borehamwood Hillside



**Alexander Clarkson**  
(Con)

cllr.alexander.clarkson  
@hertsmeire.gov.uk  
020 8953 1353



**Alpha Bird Collins**  
(Lab & Co-op)

cllr.alpha.bird.collins  
@hertsmeire.gov.uk  
07880 521 971



**Aadiya Kaza**  
(Lab & Co-op)

cllr.aadiya.kaza  
@hertsmeire.gov.uk  
07734 410 189

### Borehamwood Kenilworth



**Prabhakar Kaza**  
(Lab & Co-op)

cllr.prabhakar.kaza  
@hertsmeire.gov.uk  
07958 146 582



**Nik Oakley**  
(Lab & Co-op)

cllr.nik.oakley  
@hertsmeire.gov.uk  
07976 906 273



**Parveen Rani**  
(Lab & Co-op)

cllr.parveen.rani  
@hertsmeire.gov.uk  
07854 255 641

### Bushey Heath



**Paul Morris OBE**  
(Con)

cllr.paul.morris  
@hertsmeire.gov.uk  
07813 918 881



**Seamus Quilty**  
(Con)

cllr.seamus.quilty  
@hertsmeire.gov.uk  
07595 372 750

### Bushey North



**Alan Matthews**  
(Lib Dem)

cllr.alan.matthews  
@hertsmeire.gov.uk  
07748 731 990



**Louise Nicolas**  
(Lib Dem)

cllr.louise.nicolas  
@hertsmeire.gov.uk  
07770 894 538



**Paul Richards**  
(Lib Dem) -  
Group Leader

cllr.paul.richards  
@hertsmeire.gov.uk  
07838 786 057

### Bushey Park



**Maxie Allen**  
(Lib Dem)

cllr.maxie.allen  
@hertsmeire.gov.uk  
07885 937 108



**Marc Amron**  
(Lib Dem)

cllr.marc.amron  
@hertsmeire.gov.uk



**Shailain Shah**  
(Lib Dem)

cllr.shailain.shah  
@hertsmeire.gov.uk  
07561 855 512

### Bushey St James



**Mia Handley**  
(Lib Dem)

cllr.mia.handley  
@hertsmeire.gov.uk



**Miles Ponder**  
(Lib Dem)

cllr.miles.ponder  
@hertsmeire.gov.uk  
07590 014 056



**Chris Shenton**  
(Lib Dem)

cllr.chris.shenton  
@hertsmeire.gov.uk  
07890 214 505

### Elstree



**Morris Bright MBE**  
(Con) -  
Group Leader

cllr.morris.bright  
@hertsmeire.gov.uk  
020 8207 7570



**Harvey Cohen**  
(Con)

cllr.harvey.cohen  
@hertsmeire.gov.uk  
07974 910 215

### Potters Bar Furzefield



**Christian Gray**  
(Lab & Co-op)

cllr.christian.gray  
@hertsmeire.gov.uk  
07535 925 297



**Christopher Myers**  
(Lab & Co-op)

cllr.chris.myers  
@hertsmeire.gov.uk  
07734 699 706

### Potters Bar Oakmere



**Renos Joshua Georgiou**  
(Lab & Co-op)

cllr.renos.georgiou  
@hertsmeire.gov.uk  
07478 096 872



**Sarah Hodgson-Jones**  
(Con)

cllr.sarah.hodgson-jones  
@hertsmeire.gov.uk  
07817 890 541

### Potters Bar Parkfield



**Abhishek Sachdev**  
(Con)

cllr.abhishek.sachdev  
@hertsmeire.gov.uk  
07712 837 990



**Lynette Sullivan**  
(Con)

cllr.lynette.sullivan  
@hertsmeire.gov.uk  
07595 679 173

### Shenley



**Paul Hodgson-Jones**  
(Con)

cllr.paul.hodgson-jones  
@hertsmeire.gov.uk  
07716 832 365



**Natalie Susman**  
(Con)

cllr.natalie.susman  
@hertsmeire.gov.uk  
07939 208 447



@HertsmeireBoroughCouncil

[hertsmeire.gov.uk](https://hertsmeire.gov.uk) | Hertsmeire News | Winter 2023 | 15

# What's going on at our museums?

## Bushey Museum and Art Gallery

Did you help paint the beautiful canvas of Warren Lake and the festival tents at the recent Bushey Performing Arts Festival? If so, pop along to see your work 'Now that's real community' led by local artist Anna Schofield, on display!

Open Thursday to Sunday, 11am to 4pm.

To find out more visit:  
[busheymuseum.org](http://busheymuseum.org)

## Your Museum at 10



weigh some sweets in Hansons, see the Village Hall as it was or enjoy a stroll down memory lane.

They are also selling unique Christmas cards showing scenes from across Elstree and Borehamwood.

Open Tuesday to Thursday between midday and 6pm, and on Saturdays from 10am to 3pm.

To find out more visit:  
[elstree-museum.org.uk](http://elstree-museum.org.uk)

## Potters Bar Museum

The latest exhibition looks at Art Nouveau through the architecture, furniture, household objects and art with stunning photographs and detailed descriptions.

The museum is keen to welcome group visits outside of their usual opening times. If you would like to arrange a visit

please email  
[nandaalexander@btopenworld.com](mailto:nandaalexander@btopenworld.com)

Open Tuesdays and Wednesdays 2.30pm to 4.30pm and Saturdays 11am to 1pm.

To find out more visit:  
[pottersbarmuseum.org.uk](http://pottersbarmuseum.org.uk)

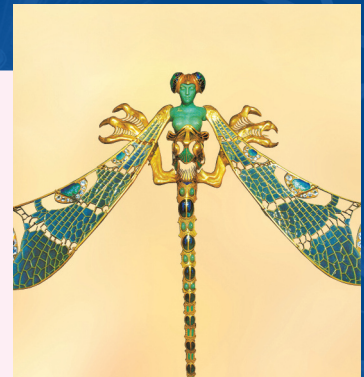
## Radlett and District Museum

The latest exhibition explores a grisly murder which took place in the village two hundred years ago.

It looks at what happened in Gills Hill Lane on 24 October 1823, which raised issues at the time about illegal entertainment, the power of the press, the administration of justice and the law.

Open Wednesdays and Saturdays 10am to midday.

To find out more visit:  
[radlettmuseum.com](http://radlettmuseum.com)



## De Havilland Museum

Experience what it's like to fly at high speed and low altitude in the new Mosquito flight simulator – could you be the next Top Gun! The museum is looking forward to celebrating World Down Syndrome Day on 21 March and World Autism Awareness Day on 2 April. Check their social media for special event details.

Open Tuesday to Sunday 10.30am to 5pm.

To find out more visit:  
[dehavillandmuseum.co.uk](http://dehavillandmuseum.co.uk)



## Elstree and Borehamwood Museum

They're celebrating a decade of exhibitions with 'Your Museum at 10' looking back at the variety of topics explored over the years. See a working model of the railway station in 1900,

## Keep in touch



There are lots of ways that you can stay in touch with us, keep yourself posted on our news, raise questions and give us your views. Here's a rundown:

- Follow us on X for tweets, photos and links to our press releases: [@HertsmereBC](https://twitter.com/HertsmereBC)
- Like us on Facebook for updates, links to our press releases and photos: [facebook.com/hertsmere](https://facebook.com/hertsmere)
- Follow us on Instagram, where we showcase the best Hertsmere has to offer: [@hertsmerebc](https://instagram.com/hertsmerebc)
- Watch our short videos to find out about our services and events across the borough: [youtube.com/HertsmereBC](https://youtube.com/HertsmereBC)
- Follow us on TikTok for short videos showcasing what we get up to across the borough: [@hertsmere](https://tiktok.com/@hertsmere)
- For our business and recruitment news, follow us on LinkedIn: [linkedin.com/company/hertsmere-borough-council](https://linkedin.com/company/hertsmere-borough-council)
- Check our website regularly. The homepage is updated frequently and all our press releases can be found under 'Latest news': [hertsmere.gov.uk](https://hertsmere.gov.uk)
- Subscribe to our FREE **News for You** e-alerts for the latest news straight to your inbox. Subscribe by clicking the link on our **contact us** page.
- Watch our planning, executive and full council meetings and various committees online: [hertsmere.public-i.tv](https://hertsmere.public-i.tv)
- Contact your local councillor: [hertsmere.gov.uk/findmycllr](https://hertsmere.gov.uk/findmycllr) or call 020 8207 7558
- By post or in person: **Hertsmere Borough Council, Civic Offices, Elstree Way, Borehamwood WD6 1WA**