

The Mary Forsdyke Garden and Warren Lake Proposals

Christmas Tree

At the High Road entrance is a *Abies nordmanniana* which will provide the town with a permanent Christmas Tree.

Trees

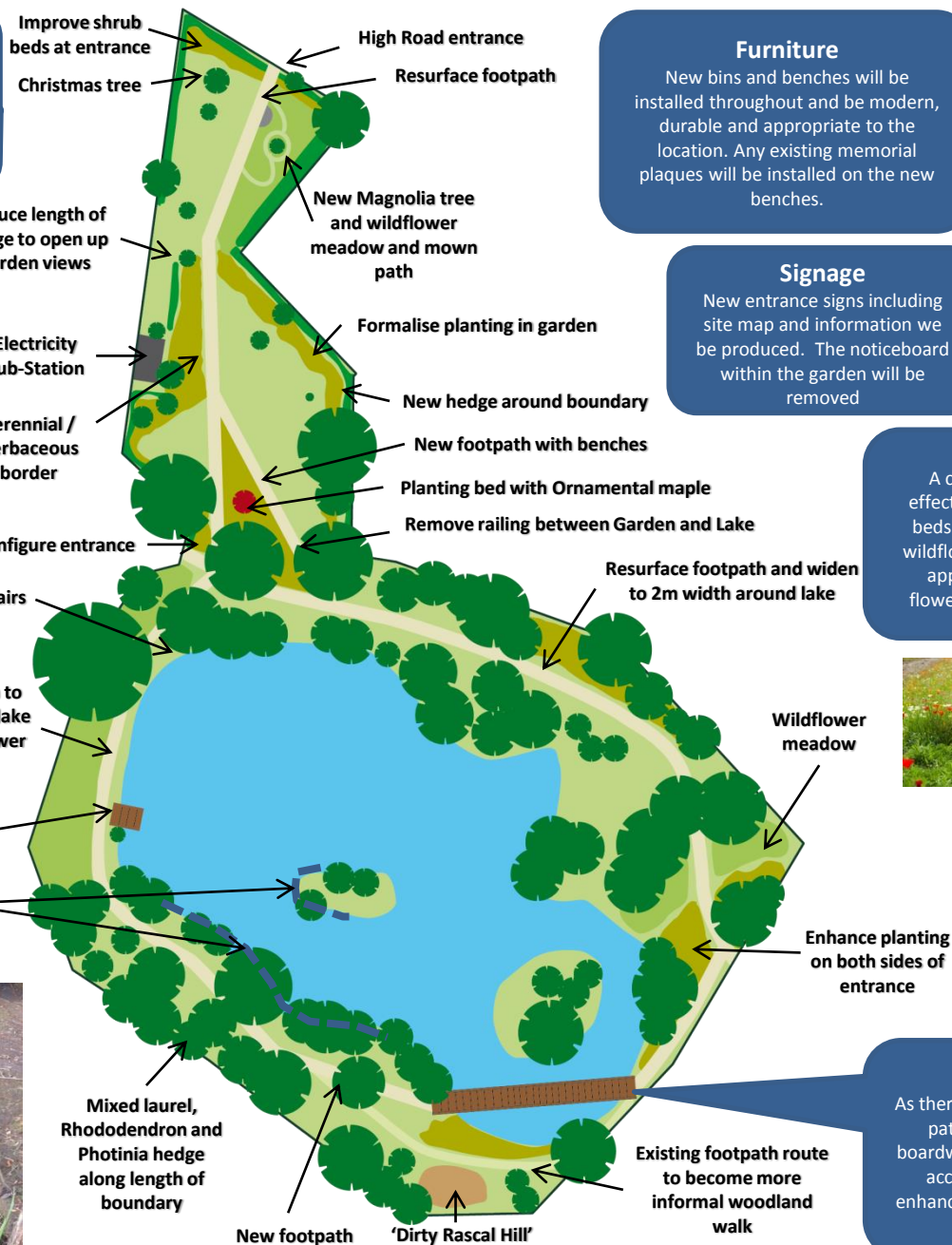
A tree condition survey will identify any works required to the trees. Some poor specimen trees will be removed to allow the footpath works and improve access.

Hedges

Existing hedges will be lowered to allow greater visibility into the Garden. New beech hedges will be planted along some boundaries of the garden and the a mixed hedge along The Comyns boundary.

Lake

- Works to the lake include:-
- De-silting
 - Bank repairs
 - Water lilies and planted coir rolls in specific locations to provide habitat and colour
 - Water quality improvements by motorised aeration



Furniture

New bins and benches will be installed throughout and be modern, durable and appropriate to the location. Any existing memorial plaques will be installed on the new benches.

Signage

New entrance signs including site map and information we be produced. The noticeboard within the garden will be removed

Weeping Ash

Unfortunately due to major basal rot, this iconic and historical tree may have to be removed. Further investigations will be taken but additional tree planting will take place

Footpaths

All paths will be topped with a flexible rubber bonded mix to prevent future cracking, especially around the lake due to ground movement and tree roots. Existing Lakeside Walk plaques will be re-fitted

Wildflower Meadows

A colourful, low maintenance and cost effective alternative to conventional flower beds and borders made up of 34 UK native wildflowers and grasses, with the addition of approximately 15 non-native perennial flowers. Different mixes will be used in the garden to around the lake.



Planting

Over mature planting will be removed and new planting schemes designed. The garden will be formalised in shape with different themed planting providing all year round interest

Boardwalk

As there is not the width to widen the main path at this point, a recycled plastic boardwalk will go across the lake providing access but providing new views and enhancing the user experience as the 'walk over the lake'