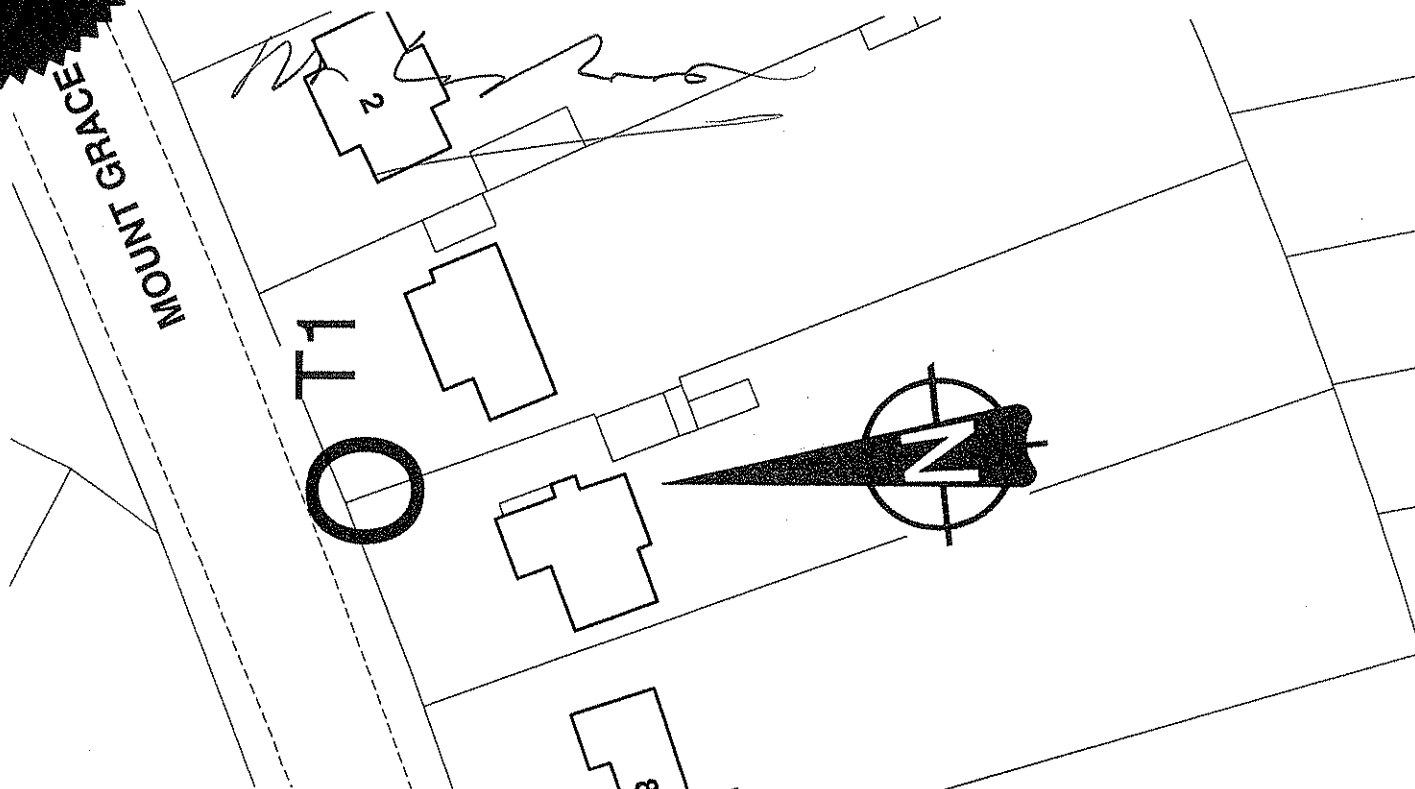


# TOWN AND COUNTRY PLANNING ACT 1990

Plan referred to in  
THE HERTSMERE BOROUGH COUNCIL  
( 4 Mount Grace road Potters Bar, Herts. )  
TREE PRESERVATION ORDER No. 339 / 1996..'



THE COMMON SEAL OF HERTSMERE BOROUGH COUNCIL  
WAS HEREUNTO AFFIXED THIS.. SEVENTH ..DAY OF  
. JUNE ...1996... IN THE PRESENCE OF :

(Signed) P.H. COPLAND MANAGING DIRECTOR

## SCHEDULE OF TREES

No	TYPE
T1	Copper Beech

Map Ref. 018-260

HERTSMERE  
BOROUGH COUNCIL  
Civic Offices  
Borehamwood  
Herts. WD6 1WA

SCALE 1: 500 DATE 30.5.96

DRAWN P.J.B CHECKED

DRAWING No

TP 658

Reproduced from the Ordnance Survey map with the permission of the  
Controller of Her Majesty's Stationary Office.  
Crown Copyright reserved.