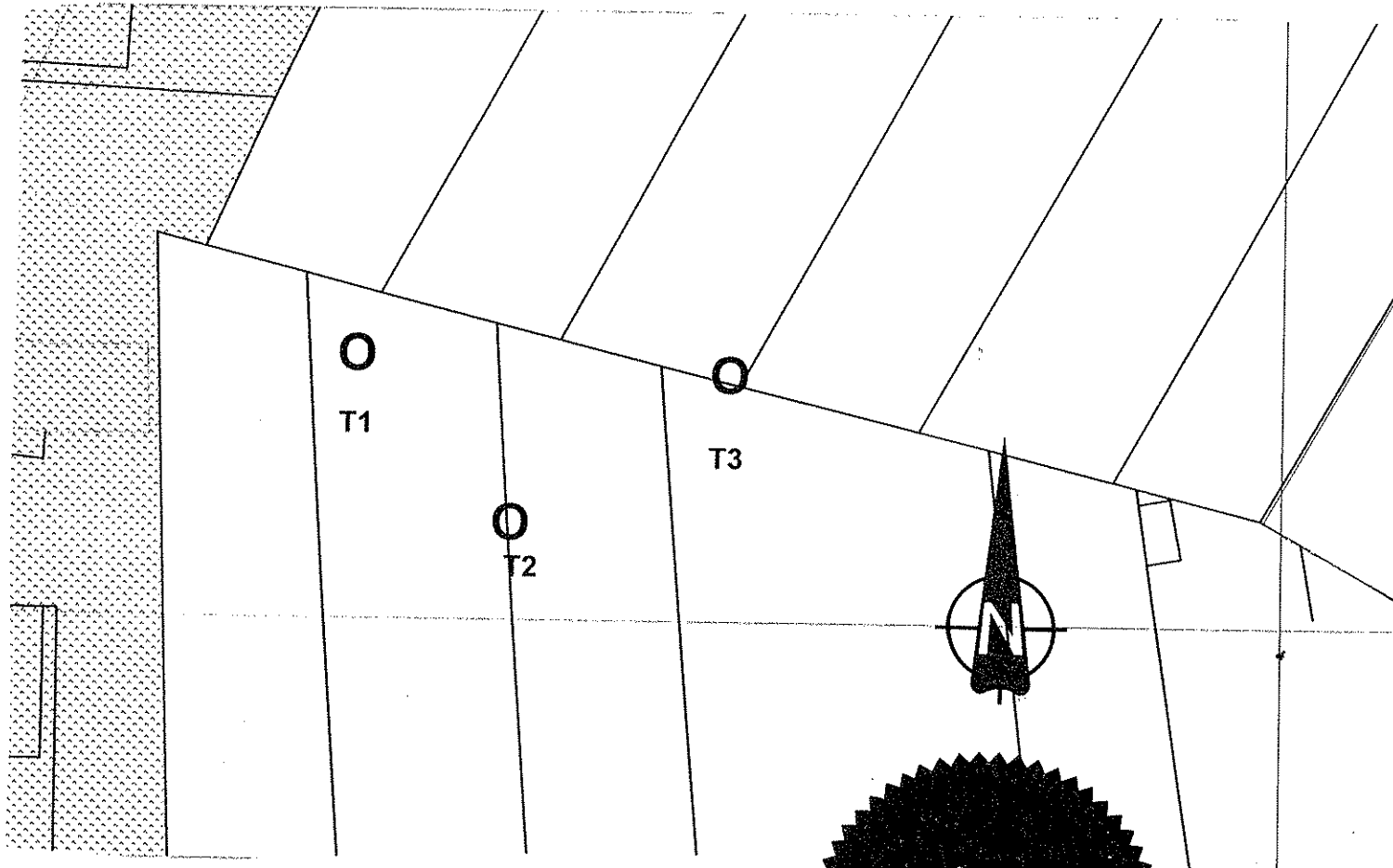


# TOWN AND COUNTRY PLANNING ACT 1990

Plan referred to in  
THE HERTSMERE BOROUGH COUNCIL  
( Plots 1-5 Land Adjacent to Anthorne Close, Potters Bar, Herts.. )  
TREE PRESERVATION ORDER No.379 / 1997..

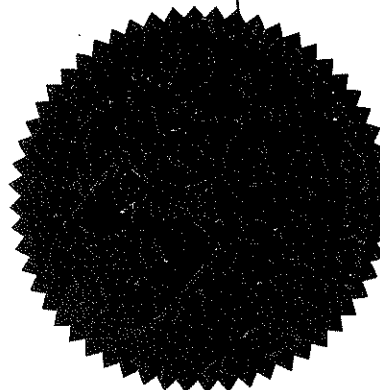


THE COMMON SEAL OF HERTSMERE BOROUGH COUNCIL  
WAS HEREUNTO AFFIXED THIS.. NINETEENTH ..DAY OF  
AUGUST ...1997... IN THE PRESENCE OF :

(Signed)

P.H. COPLAND

MANAGING DIRECTOR



## SCHEDULE OF TREES

No	TYPE
T1	Pine
T2	Oak
T3	Ash

Map Ref. TL 258 019

HERTSMERE  
BOROUGH COUNCIL  
Civic Offices  
Borehamwood  
Herts WD6 1WA

SCALE 1: 500	DATE 18.8.97
DRAWN P.J.B	CHECKED
DRAWING No	

TP 698

Reproduced from the Ordnance Survey map with the permission of the  
Controller of Her Majesty's Stationery Office.  
Crown Copyright reserved.