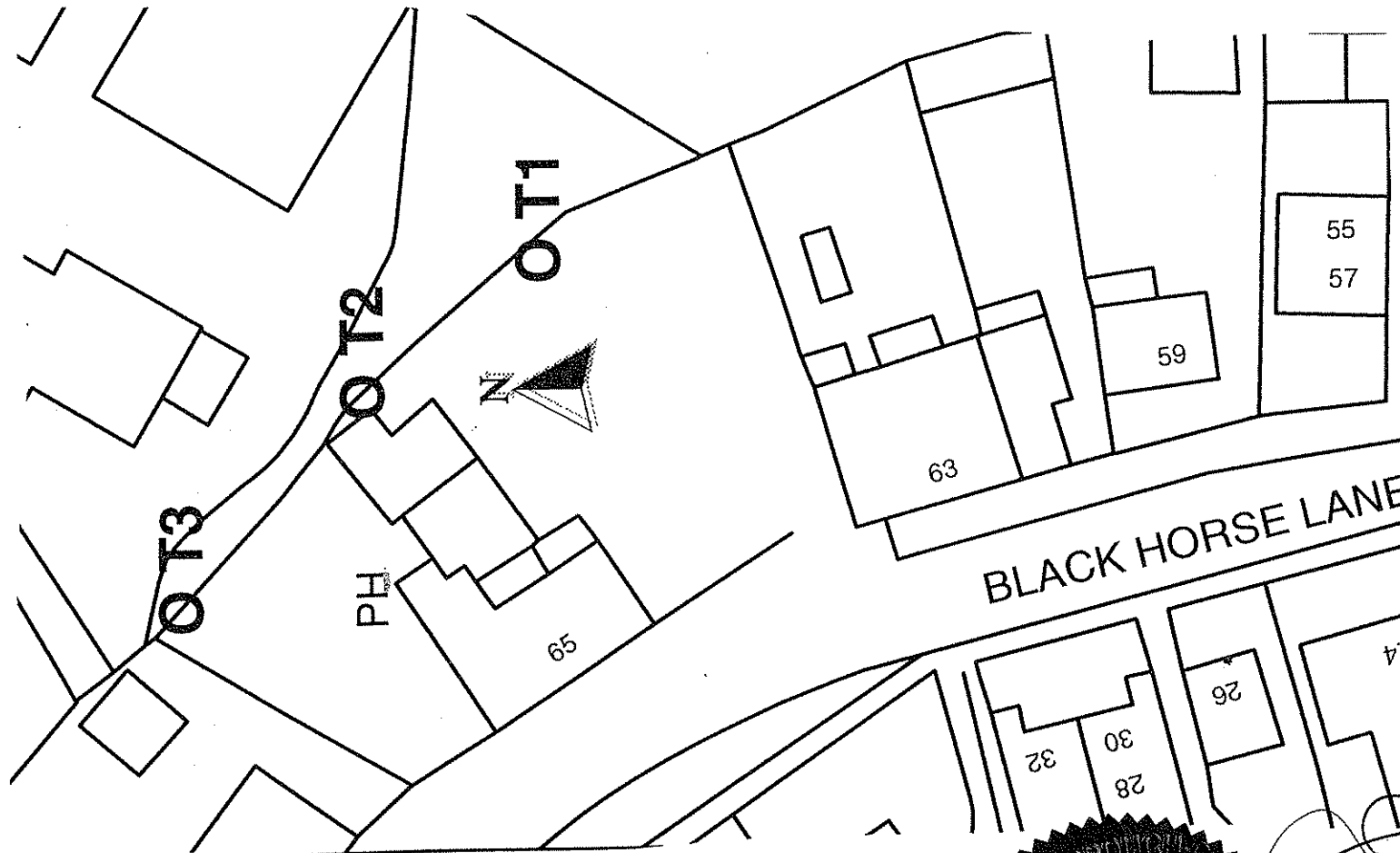


# TOWN AND COUNTRY PLANNING ACT 1990

Plan referred to in  
THE HERTSMERE BOROUGH COUNCIL  
TREE PRESERVATION ORDER No.409 / 1998  
The Black Horse Public House,  
65 Blackhorse lane, South Mimms, Herts.



THE COMMON SEAL OF HERTSMERE BOROUGH COUNCIL  
WAS HEREUNTO AFFIXED THIS EIGHTH DAY OF  
JULY 1998 IN THE PRESENCE OF :

(Signed) MARY COOPER

HEAD OF LEGAL SERVICES



## SCHEDULE OF TREES

No	TYPE
T1	2 x Sycamore with common crown.
T2	Ash.
T3	Ash.

Map Ref. TL220 015

HERTSMERE  
BOROUGH COUNCIL  
Civic Offices  
Borehamwood  
Herts. WD6 1WA

SCALE 1: 500	DATE 30.6.98
DRAWN P.J.B	CHECKED

DRAWING No

TP 728

Derived from the Ordnance Survey map with the permission of the Controller of Her Majesty's Stationery Office. Crown Copyright reserved. Licence Number LA028219 Herts.