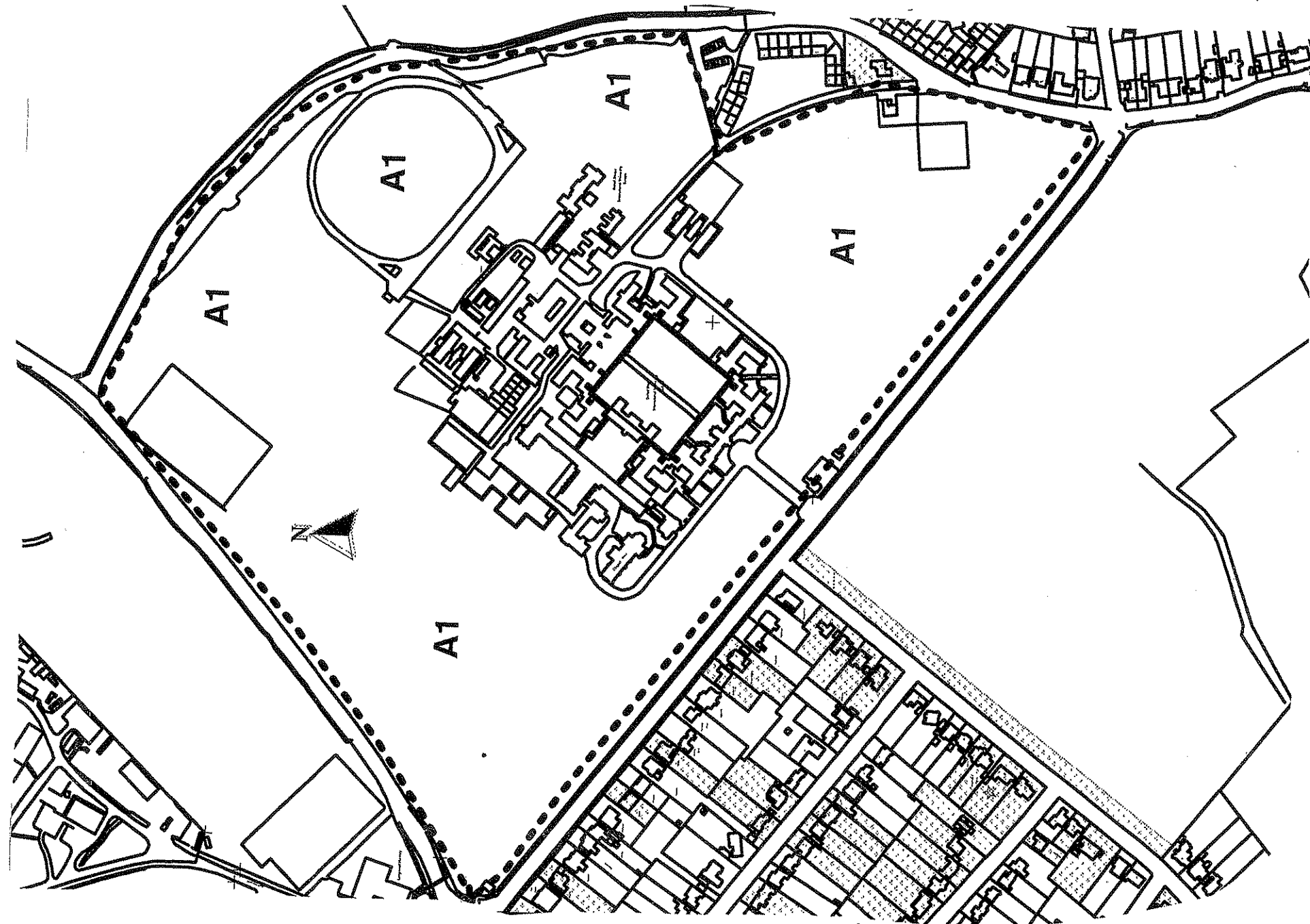


# TOWN AND COUNTRY PLANNING ACT 1990

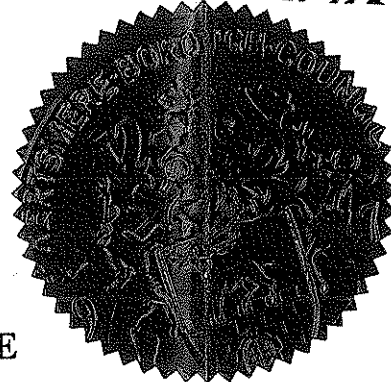
Plan referred to in  
THE HERTSMERE BOROUGH COUNCIL  
TREE PRESERVATION ORDER No. 412 / 1998  
International University, The Avenue, Bushey, Herts.



THE COMMON SEAL OF HERTSMERE BOROUGH COUNCIL  
WAS HEREUNTO AFFIXED THIS TWENTIETH DAY OF  
JULY 1998 IN THE PRESENCE OF :

(Signed) P.H. COPLAND

*P.H. Copland*  
CHIEF EXECUTIVE



Reproduced from the Ordnance Survey map with the permission of the  
Controller of Her Majesty's Stationery Office.  
Crown Copyright reserved.  
Licence Number LA078239 Hertsmere

## SCHEDULE OF TREES

No	TYPE
A1	All trees of what ever species contained within the area marked A1 on the plan

Map Ref. TQ 128 963

HERTSMERE  
BOROUGH COUNCIL  
Civic Offices  
Borehamwood  
Herts. WD6 1WA

SCALE 1: 3850	DATE 17.7.98
DRAWN P.J.B	CHECKED

DRAWING No

TP 731