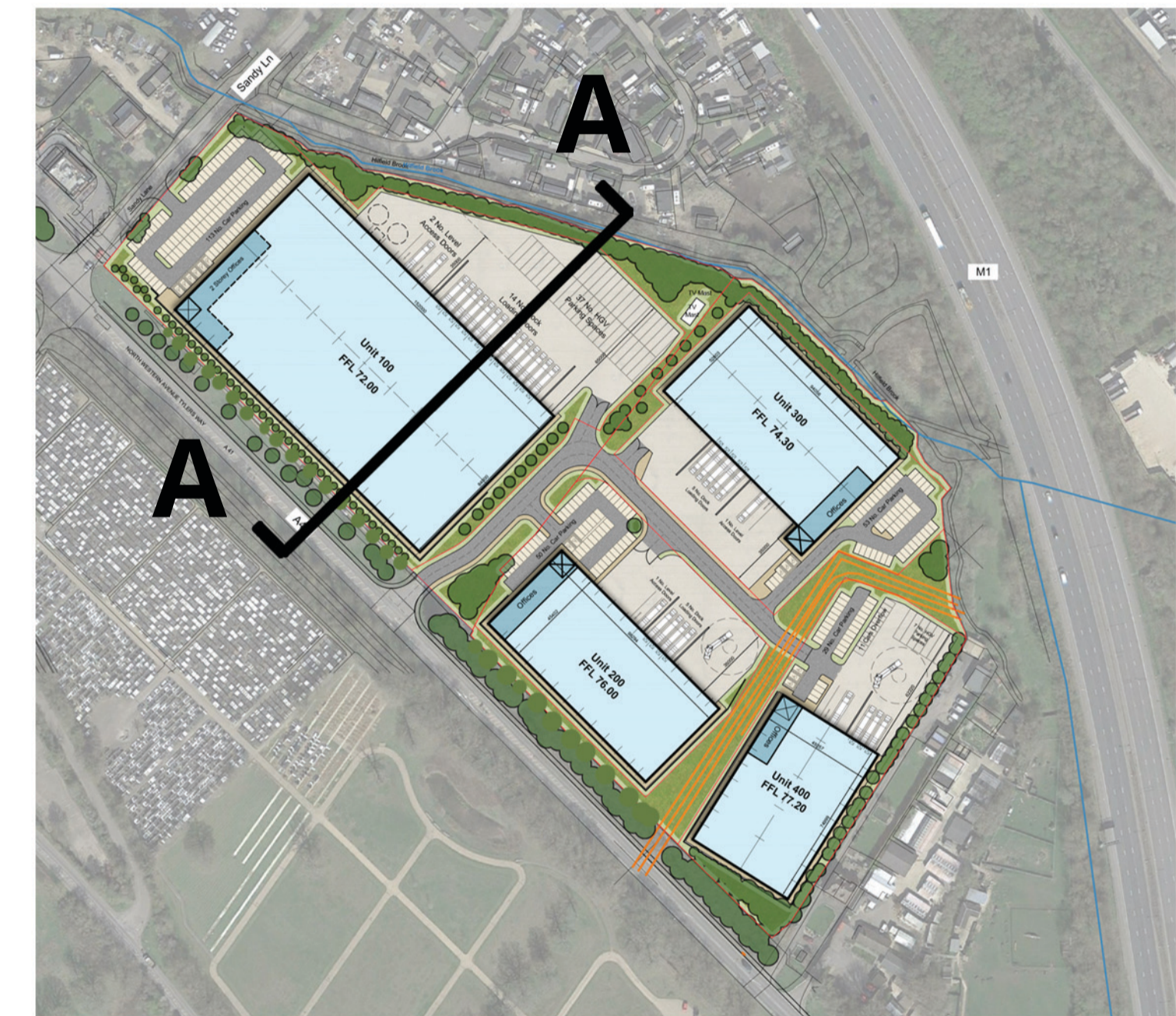
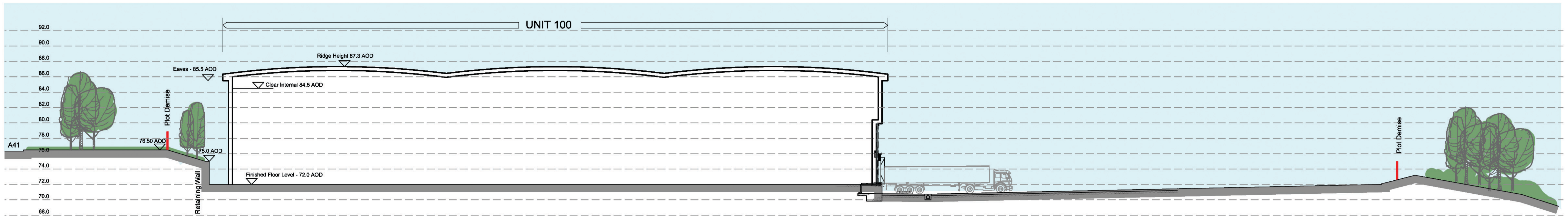


# Section A-A



rev	amendments	by	ckd	date

Mercure Hotel Site, Watford

Site Sections

REGEN PROPERTIES



Newark Bascon, Cafferata Way, Newark, Nottinghamshire NG24 2TN  
 t. +44 (0)1636 653027 e. info@umcarchitects.com

Drawing Status:	Feasibility
Drawn / Checked:	RAC / CA
Date:	26.02.2021
Scale:	1:250 A1
Drawing no:	Revision:
20425 F0015	D